



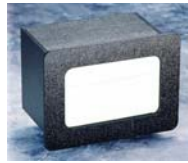
Outperform every day.™

Project:

Item Number:

Quantity:

## FLUSH MOUNT DISPENSERS AND HOLDERS



FMN-1



FMHVN-1



FML-2



FMDL-2V



FMS-1A



FMS-3



FMT-1



MT-1.5



TT-1

Flush Mount Dispensers and Holders

### FEATURES

- Impact-resistant molded thermoplastic construction
- Mounts flush with counter
- Includes mounting screws

### Napkin Dispensers

Feature	FMN-1	FMHVN-1	FMHVN-2	FMNL-1
Spring loaded for continuous dispensing	yes	yes	yes	yes
Napkin restricter (face plate) reduces waste and easy refilling	no	yes	yes	no
Mounting	Horizontal or Vertical			Horizontal
Capacity	500	500	500	100

### Lid Holders

- Horizontal lid Holders column dividers can be adjusted to accommodate almost any size lid
- Dome Lid Holders accommodate standard size dome lids

### Straw Dispensers

- FMS-1A and FMS-2A are a 2-box system for easy loading
- FMS-3, FMS-4 and FMS-5 feature two compartments for different size straws

### Waxed Tissue Dispenser

- 2-box system for easy loading
- Accommodates most mini-size wax tissue cartons

### Trash Receptacle Door and Inserts

- Options to place trash receptacles in easy to locate and use locations keep self-serve areas clean and organized.

Due to continued product improvement, please consult [www.vollrath.com](http://www.vollrath.com) for current product specifications.

### DESCRIPTION

Vollrath's line of Flush Mount Dispensers and Holders keep busy self-serve stations neat and organized, making it easy for customers to find what they need. The multi-compartment dispensers provide maximum storage in a small footprint.

### MODELS

- FMN-1** Napkin Dispenser, Accommodates 6½"H x 5"W (16.5H x 12.7W cm) Folded Napkin
- FMHVN-1** Napkin Dispenser, High Volume, Accommodates 6½"H x 5"W (16.5H x 12.7W cm) Folded Napkin
- FMHVN-2** Napkin Dispenser, High Volume, Accommodates 6½"H x 3½"W (16.3H cm x 8.9W) Folded Napkin
- FMNL-1** 1 Napkin Dispenser and 1 Lid Holder, Horizontal Accommodates 5"H x 6½"W (12.7H x 16.5W cm) or 5½"H x 6½"W (14H x 16.5W cm) Folded Napkin
- FML-1** 1 Column Lid Holder, Horizontal or Vertical
- FML-2** 2 Column Lid Holder, Horizontal
- FML-2V** 2 Column Lid Holder, Vertical
- FML-3** 3 Column Lid Holder, Horizontal
- FML-3V** 3 Column Lid Holder, Vertical
- FML-4V** 4 Column Lid Holder, Vertical
- FML-3VS** 3 Column Lid and 1 Straw Holder, Vertical
- FML-4VS** 4 Column Lid and 1 Straw Holder, Vertical
- FMDL-2V** 2 Stack Dome Lid Holders, Vertical
- FMDL-3H** 3 Stack Dome Lid Holders, Horizontal
- FMDL-3V** 3 Stack Dome Lid Holders, Vertical
- FMS-1A** Unwrapped, One-At-A-Time Straw Dispenser, 8"
- FMS-2A** Unwrapped, One-At-A-Time Straw Dispenser, 10"
- FMS-3** Wrapped Straw Holder, 8-10" Straws
- FMS-4** Wrapped Straw Holder, 10-12" Straws
- FMS-5** Stir Stick Holder
- FMT-1** Waxed Tissue Dispenser (Holds most mini cartons)
- MT-1** Trash Receptacle Door, Small
- MT-1.5** Trash Receptacle Door, Medium
- MT-2** Trash Receptacle Door, Large
- TT-1** Trash Receptacle Insert, Small
- TT-2** Trash Receptacle Insert, Large

**WARRANTY:** All models shown come with Vollrath's standard warranty against defects in materials and workmanship. For full warranty details, please refer to the Vollrath Equipment and Smallwares Catalog.

Approvals	Date



Outperform every day.™  
www.vollrath.com

The Vollrath Company, L.L.C.  
1236 North 18th Street  
Sheboygan, WI 53081-3201 U.S.A.  
Customer Service: 800.628.0830  
Canada Customer Service: 800.695.8560  
Main Fax: 800.752.5620 or 920.459.6573

Technical Services: 800.628.0832  
Technical Services Fax: 920.459.5462

## FLUSH MOUNT DISPENSERS AND HOLDERS

### MODELS

<b>FMN-1</b>	<b>Napkin Dispenser,</b> 6½"H x 5"W (16.5H x 12.7W cm) <b>Folded Napkin</b>	<b>FML-3VS</b>	<b>3 Column Lid and 1 Straw Holder, Vertical</b>
<b>FMHVN-1</b>	<b>Napkin Dispenser, High Volume,</b> 6½"H x 5"W (16.5H x 12.7W cm) <b>Folded Napkin</b>	<b>FML-4VS</b>	<b>4 Column Lid and 1 Straw Holder, Vertical</b>
<b>FMHVN-2</b>	<b>Napkin Dispenser, High Volume,</b> 6½"H x 3½"W (16.3H cm x 8.9W) <b>Folded Napkin</b>	<b>FMDL-2V</b>	<b>2 Stack Dome Lid Holders, Horizontal or Vertical</b>
<b>FMNL-1</b>	<b>1 Napkin Dispenser and 1 Lid Holder, Horizontal</b> 5"H x 6½"W (12.7H x 16.5W cm) <b>or</b> 5½"H x 6½"W (14H x 16.5W cm) <b>Folded Napkin</b>	<b>FMDL-3H</b>	<b>3 Stack Dome Lid Holders, Horizontal</b>
<b>FML-1</b>	<b>1 Column Lid Holder, Horizontal or Vertical</b>	<b>FMDL-3V</b>	<b>3 Stack Dome Lid Holders, Vertical</b>
<b>FML-2</b>	<b>2 Column Lid Holder, Horizontal</b>	<b>FMS-1A</b>	<b>Unwrapped, One-At-A-Time Straw Dispenser, 8"</b>
<b>FML-2V</b>	<b>2 Column Lid Holder, Vertical</b>	<b>FMS-2A</b>	<b>Unwrapped, One-At-A-Time Straw Dispenser, 10"</b>
<b>FML-3</b>	<b>3 Column Lid Holder, Horizontal</b>	<b>FMS-3</b>	<b>Wrapped Straw Holder, 8-10" Straws</b>
<b>FML-3V</b>	<b>3 Column Lid Holder, Vertical</b>	<b>FMS-4</b>	<b>Wrapped Straw Holder, 10-12" Straws</b>
<b>FML-4V</b>	<b>4 Column Lid Holder, Vertical</b>	<b>FMS-5</b>	<b>Stir Stick Holder</b>
		<b>FMT-1</b>	<b>Waxed Tissue Dispenser (Holds most mini cartons)</b>
		<b>MT-1</b>	<b>Trash Receptacle Door, Small</b>
		<b>MT-1.5</b>	<b>Trash Receptacle Door, Medium</b>
		<b>MT-2</b>	<b>Trash Receptacle Door, Large</b>
		<b>TT-1</b>	<b>Trash Receptacle Insert, Small</b>
		<b>TT-2</b>	<b>Trash Receptacle Insert, Large</b>

### SPECIFICATIONS

Item	Dimensions IN (CM)				Shipping Weight LB (KG)
	Height	Width	Depth	Cutout Size	
FMN-1	8½ (21.6)	6¼ (15.9)	5¾ (13.7)	7 <sup>9</sup> / <sub>16</sub> x 5 <sup>5</sup> / <sub>16</sub> (19.2 x 13.5)	3 (1.4)
FMHVN-1	8½ (21.6)	7 <sup>1</sup> / <sub>8</sub> (18.1)	19½ (49.5)	7 <sup>5</sup> / <sub>8</sub> x 6 <sup>3</sup> / <sub>16</sub> (19.4 x 15.7)	3 (1.4)
FMHVN-2	8½ (21.6)	5 <sup>5</sup> / <sub>8</sub> (14.3)	19½ (49.5)	7 <sup>5</sup> / <sub>8</sub> x 4 <sup>11</sup> / <sub>16</sub> (19.4 x 11.9)	8 (3.6)
FMNL-1	8 (20.3)	10½ (26.7)	7½ (19.1)	7 <sup>1</sup> / <sub>16</sub> x 9 <sup>5</sup> / <sub>8</sub> (17.9 x 24.4)	5 (2.3)
FML-1	7¼ (18.4)	6½ (16.5)	5¾ (13.7)	6 <sup>5</sup> / <sub>16</sub> x 5 <sup>9</sup> / <sub>16</sub> (16 x 14.1)	8 (3.6)
FML-2	7¼ (18.4)	11 (27.9)	5¾ (13.7)	6 <sup>9</sup> / <sub>16</sub> x 10 <sup>1</sup> / <sub>16</sub> (16 x 25.6)	4 (1.8)
FML-2V	13 <sup>7</sup> / <sub>16</sub> (34.1)	6½ (16.5)	5¾ (13.7)	12½ x 5 <sup>9</sup> / <sub>16</sub> (31.8 x 14.1)	4 (1.8)
FML-3	7¼ (18.4)	16 (40.6)	5¾ (13.7)	6 <sup>9</sup> / <sub>16</sub> x 15 <sup>1</sup> / <sub>16</sub> (16 x 38.3)	5 (2.3)
FML-3V	19 <sup>9</sup> / <sub>8</sub> (49.2)	6½ (16.5)	5¾ (13.7)	18 <sup>7</sup> / <sub>16</sub> x 5 <sup>9</sup> / <sub>16</sub> (46.8 x 14.1)	4 (1.8)
FML-4V	25½ (64.8)	6½ (16.5)	5¾ (13.7)	24 <sup>9</sup> / <sub>16</sub> x 5 <sup>9</sup> / <sub>16</sub> (62.4 x 14.1)	5 (2.3)
FML-3VS	25½ (64.8)	6½ (16.5)	13 (33)	24 <sup>9</sup> / <sub>16</sub> x 5 <sup>9</sup> / <sub>16</sub> (62.4 x 14.1)	5 (2.3)
FML-4VS	31½ (80)	6½ (16.5)	13 (33)	30 <sup>9</sup> / <sub>16</sub> x 5 <sup>9</sup> / <sub>16</sub> (77.6 x 14.1)	6 (2.7)
FMDL-2V	13 <sup>3</sup> / <sub>8</sub> (34)	6¾ (17.1)	12 (30.5)	12½ x 5 <sup>7</sup> / <sub>8</sub> (31.8 x 14.9)	4 (1.8)
FMDL-3H	6¾ (17.1)	18 <sup>7</sup> / <sub>8</sub> (47.9)	13¼ (33.7)	12½ x 5 <sup>7</sup> / <sub>8</sub> (31.8 x 14.9)	4 (1.8)
FMDL-3V	18 <sup>7</sup> / <sub>8</sub> (47.9)	6¾ (17.1)	13¼ (33.7)	18 x 5 <sup>7</sup> / <sub>8</sub> (45.7 x 14.9)	5 (2.3)
FMS-1A	7¼ (18.4)	10½ (26.7)	5¾ (13.7)	6 <sup>3</sup> / <sub>8</sub> x 9 <sup>5</sup> / <sub>8</sub> (16.2 x 24.4)	5 (2.3)
FMS-2A	7¼ (18.4)	12½ (31.8)	5¾ (13.7)	6 <sup>3</sup> / <sub>8</sub> x 11 <sup>5</sup> / <sub>8</sub> (16.2 x 29.5)	6 (2.7)
FMS-3	7¼ (18.4)	6½ (16.5)	7½ (19.1)	6 <sup>3</sup> / <sub>8</sub> x 5 <sup>7</sup> / <sub>8</sub> (16.2 x 14.3)	3 (1.4)
FMS-4	7¼ (18.4)	6½ (16.5)	13 (33)	6 <sup>3</sup> / <sub>8</sub> x 5 <sup>7</sup> / <sub>8</sub> (16.2 x 14.3)	4 (1.8)
FMS-5	7¼ (18.4)	6½ (16.5)	5 <sup>7</sup> / <sub>8</sub> (14.9)	6 <sup>3</sup> / <sub>8</sub> x 5 <sup>7</sup> / <sub>8</sub> (16.2 x 14.3)	3 (1.4)
FMT-1	8 (20.3)	8¼ (21)	3½ (8.9)	7 <sup>1</sup> / <sub>16</sub> x 7 <sup>9</sup> / <sub>16</sub> (17.9 x 18.6)	3 (1.4)
MT-1	7½ (19.1)	10 <sup>5</sup> / <sub>8</sub> (27)	2¼ (5.7)	6 <sup>9</sup> / <sub>16</sub> x 9 <sup>11</sup> / <sub>16</sub> (16.7 x 24.6)	2 (.9)
MT-1.5	7½ (19.1)	13¼ (33.7)	2¼ (5.7)	6 <sup>9</sup> / <sub>16</sub> x 9 <sup>11</sup> / <sub>16</sub> (16.7 x 24.6)	2 (.9)
MT-2	7½ (19.1)	17 <sup>5</sup> / <sub>8</sub> (44.8)	2¼ (5.7)	6 <sup>9</sup> / <sub>16</sub> x 9 <sup>11</sup> / <sub>16</sub> (16.7 x 24.6)	2 (.9)
	<b>Outside Dia.</b>	<b>Inside Dia.</b>			
TT-1	7 <sup>5</sup> / <sub>8</sub> (19.4)	6 (15.2)	6 (15.2)	6¾ (17.1)	2 (0.9)
TT-2	9¼ (23.5)	8 (20.3)	6½ (16.5)	8 <sup>5</sup> / <sub>8</sub> (21.3)	3 (1.4)



Outperform every day.™

www.vollrath.com

The Vollrath Company, L.L.C.  
 1236 North 18th Street  
 Sheboygan, WI 53081-3201 U.S.A.  
 Customer Service: 800.628.0830  
 Canada Customer Service: 800.695.8560  
 Main Fax: 800.752.5620 or 920.459.6573

Technical Services: 800.628.0832  
 Technical Services Fax: 920.459.5462