



ADA Compliant

This Space for Architect/Engineer Approval

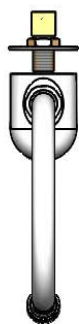
Job Name _____ Date _____

Model Specified _____ Quantity _____

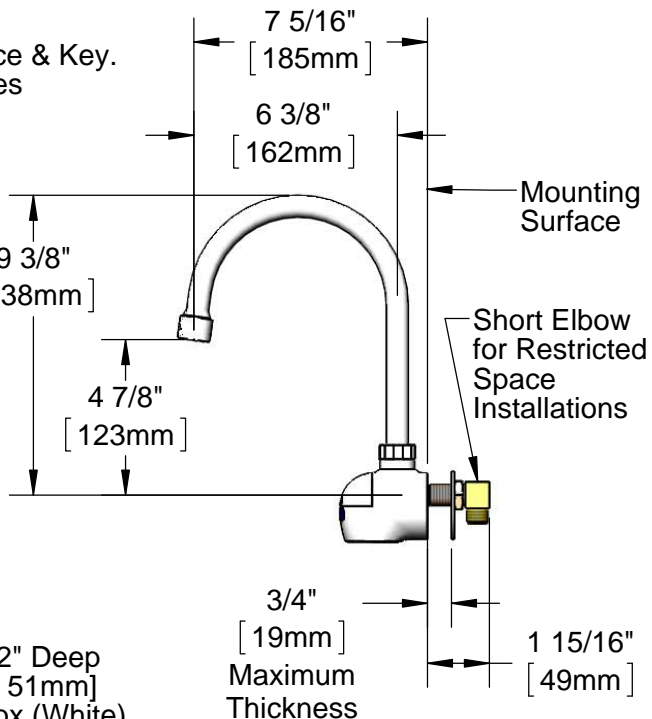
Customer/Wholesaler _____

Contractor _____

Architect/Engineer _____

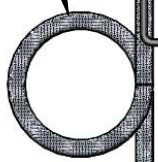


Swivel Gooseneck w/
B-0199-06-N05
VR 0.5 GPM [1.9 LPM]
Non-Aerated Spray Device & Key.
Rigid Conversion Requires
014200-45 Lock Washer
(Included)



1/2" NPSM x 3/8" NPSM
30" [762mm] Long Flexible
Stainless Steel Hose

10 3/4"
[273mm]



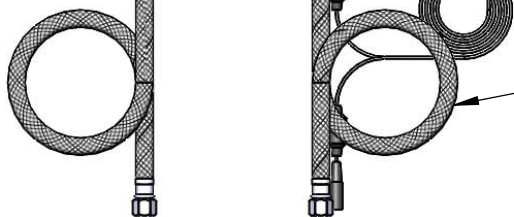
Removable
Strainer

24" [610mm]
Sensor Cable

3 5/8" x 4 3/16" x 2" Deep
[92mm x 106mm x 51mm]
Control Module Box (White)
w/ Water Resistant Connections.
AC or DC Operated w/
(4) AA Batteries

Mechanical Mixing
Valve w/ Integral
Check Valves

100-240 Vac Adapter
144" [3658mm] Long
Double Power Cord
(Remove Rubber Plugs
on Module & cable to
Connect



(2) 3/8" Compression x 1/2" NPSM Female
18" [457mm] Flexible Stainless Steel Supply
Hoses

Rough-In Requirement
Ø 1 1/8" [29mm] Mounting Hole

Model Number

5EF-1D-WG-VF05

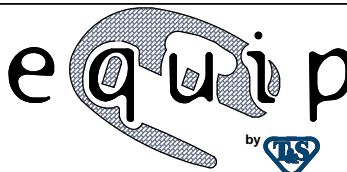
Product Specifications:

Electronic Faucet: Wall Mount Swivel Gooseneck w/ VR 0.5 GPM Non-Aerated Spray Device, Temperature Control Mixing Valve w/ Integral Check Valves, (2) 18" Long Flexible Supply Hoses & AC-DC Control Module

Product Compliance:

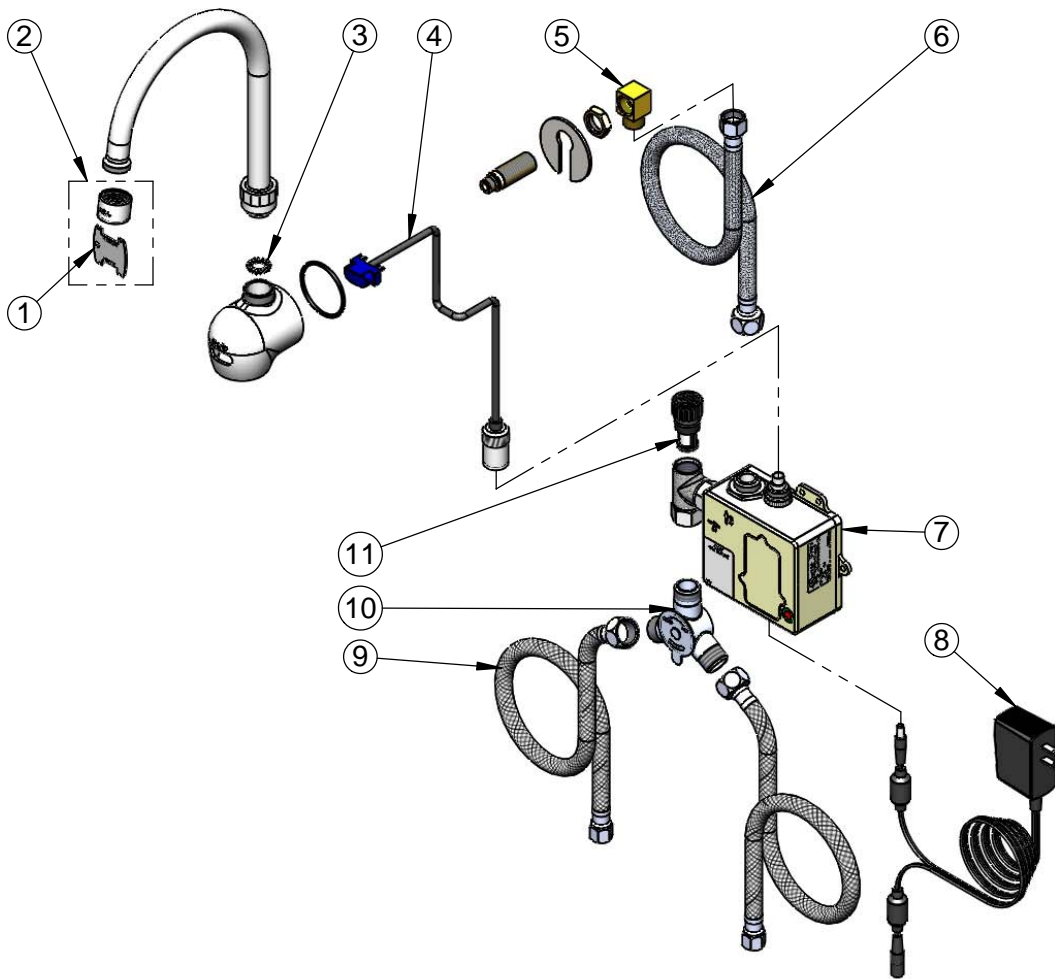
ASME A112.18.1 / CSA B125.1
NSF 61 - Section 9
NSF 372 (Low Lead Content)
ANSI A117.1 (ADA)
UL 1951

equip
Foodservice
Accessories



2 Saddleback Cove, P.O. Box 1088
Travelers Rest, South Carolina 29690
Phone: 800.891.4808 Fax: 800.868.0084
equip.tsbrass.com

ITEM NO.	SALES NO.	DESCRIPTION
1	015425-45	Vandal Resistant Key
2	B-0199-06-N05	VR 0.5 GPM Non-Aerated Spray Device, 55/64-27 UN Female w/ Key
3	017421-45	Serrated Lock Washer
4	5EF-0003	24" Sensor Cable
5	015345-20	3/8-18 Low Profile Elbow
6	016325-45	Inlet Hose, Faucet, 1/2" NPSM Female x 3/8" NPSM Female
7	5EF-0001	equip Sensor Faucet - Control Module
8	5EF-0002	equip AC Transformer, 100-240 VAC
9	5EF-0005	Supply Hose, 9/16-24 Female x 1/2" NPSM
10	5EF-0006	Mechanical Mixing Valve
11	5EF-FILTER	Replacement Filter



Model Number

5EF-1D-WG-VF05

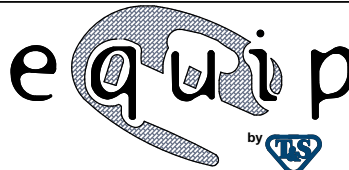
Product Specifications:

Electronic Faucet: Wall Mount Swivel Gooseneck w/ VR 0.5 GPM Non-Aerated Spray Device, Temperature Control Mixing Valve w/ Integral Check Valves, (2) 18" Long Flexible Supply Hoses & AC-DC Control Module

Product Compliance:

ASME A112.18.1 / CSA B125.1
NSF 61 - Section 9
NSF 372 (Low Lead Content)
ANSI A117.1 (ADA)
UL 1951

equip
Foodservice
Accessories



2 Saddleback Cove, P.O. Box 1088
Travelers Rest, South Carolina 29690
Phone: 800.891.4808 Fax: 800.868.0084
equip.tsbrass.com