

Refrigerated Self-Service Counter Case

Lengths include end panels

- ☐ CO33R 36-1/4"L x 32-3/8"D x 33-3/4"H
- ☐ CO43R 47-1/4"L x 32-3/8"D x 33-3/4"H
- ☐ CO53R 59-1/4"L x 32-3/8"D x 33-3/4"H
- ☐ CO63R 71-1/4"L x 32-3/8"D x 33-3/4"H



STD = FREESTANDING (-FS) / 33-3/4"H



OPT = COUNTER HEIGHT (-CH) / 33-3/4"H



OPT = UNDERCOUNTER HEIGHT (-UC) / 32-3/4"H



STANDARD FEATURES

- NOTE: ADD SUFFIX TO MODEL # LISTED ABOVE BASED ON MODEL CONFIGURATION CHOSEN BELOW
- Breeze~E (Type-II) w/ EnergyWise s/c refrigeration
- Casters (non-locking) w/ levelers
- Compressor air rear intake, front discharge at toe kick. Front and rear panels cannot be blocked. Must remain 4" from wall
- Condensate pan (self-contained refrig. only)
- Flat front panel
- Integrated average product temperature of 40°F or less
- LED 3500K top light
- One year parts & labor; 5 year compressor warranty
- Removable deck pans provide complete access to evaporator coil & refrigeration connections
- Toe kick, black

Features	Standard	Options
MODEL CONFIGURATION	<input type="checkbox"/> Freestanding (-FS) Counter ht. 33-3/4"H; freestanding unit w/2 end panels. Top & front panels positioned between end panels	<input type="checkbox"/> Counter height (-CH) Counter ht. 33-3/4"H; Top & front panels extended over end panels to blend w/adj. counters (supplied by others) <input type="checkbox"/> Undercounter height (-UC) Undercounter ht. 32-3/4"H; front panel extends over end panels to blend w/adj. counters (supplied by others). Counter surface (supplied by others) extends over top of unit
EXTERIOR COLOR	<input type="checkbox"/> Laminated (non-premium) Confirm pattern/grain direction	<input type="checkbox"/> Laminated (premium) Confirm pattern/grain direction <input type="checkbox"/> Stainless steel exterior
INTERIOR COLOR	<input type="checkbox"/> Black interior	<input type="checkbox"/> Stainless steel Interior
END PANEL LEFT	<input type="checkbox"/> Square full end panel w/mirror	<input type="checkbox"/> Curved end panel w/mirror (-FS model only) <input type="checkbox"/> No end panel (for same case to case connect)
END PANEL RIGHT	<input type="checkbox"/> Square full end panel w/mirror	<input type="checkbox"/> Curved end panel w/mirror (-FS model only) <input type="checkbox"/> No end panel (for same case to case connect) (requires sync defrost cycles)
EXTERIOR BACK PANEL	<input type="checkbox"/> Solid back panel, black	<input type="checkbox"/> Solid back panel, stainless steel
ELECTRICAL CONNECT	<input type="checkbox"/> 6' straight blade power cord (self-cont.)	<input type="checkbox"/> 6' locking power cord (self-cont.) <input type="checkbox"/> Electrical leads (remote)
REFRIGERATION	<input type="checkbox"/> Breeze~E (Type-II) w/ EnergyWise s/c refrigeration	<input type="checkbox"/> Note: Remote doesn't incl Conds unit. Floor drain reqd. <input type="checkbox"/> 1 Remote w/thermostat, solenoid & TXV
MISCELLANEOUS		<input type="checkbox"/> Second year parts & labor warranty (excludes compressor) <input type="checkbox"/> Synchronized defrost cycles (w/ connect of same case models w/o case to case acrylic panel)
ACCESSORIES		<input type="checkbox"/> 2"H Full depth display riser(s) for lower display <input type="checkbox"/> Clean Sweep® coil cleaner (n/a w/remote) <input type="checkbox"/> Night curtain, retractable, non-locking <input type="checkbox"/> Solid security cover, removable, locking

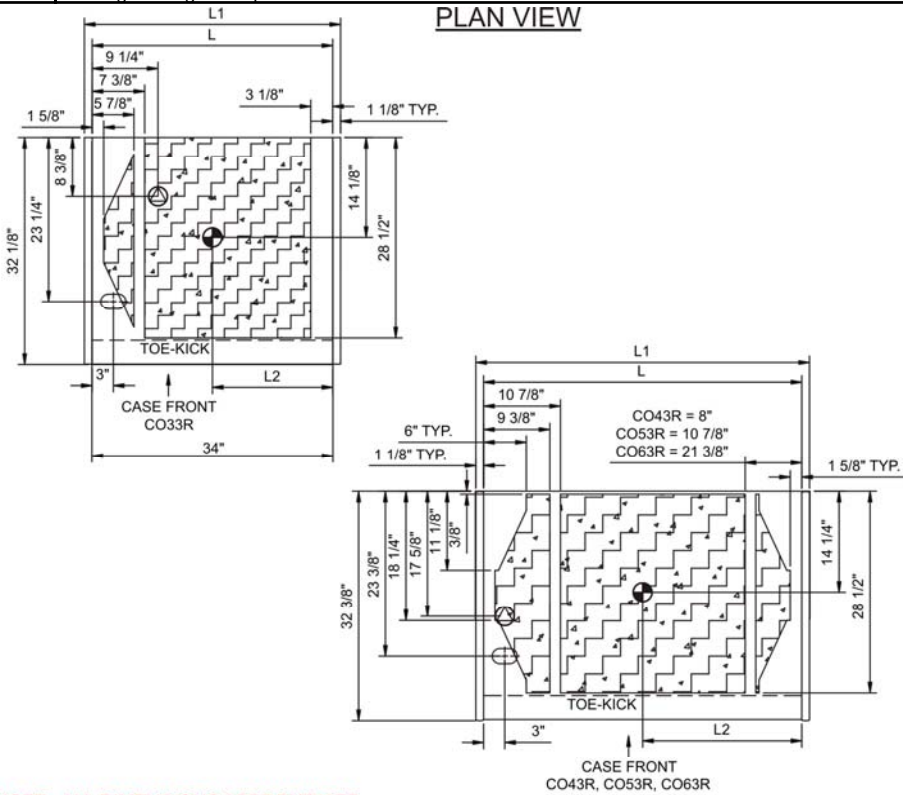
Option Notes: 1 - See tech spec for remote load reqmts

Product Specifications

Intended Environment: Type II - Designed to operate in ambient conditions of 80°F and 60% relative humidity unless noted otherwise in system information below.

Zone	Intended Product To Be Displayed	Integrated Prod Temp ° F
All	Packaged refrigerated products	40

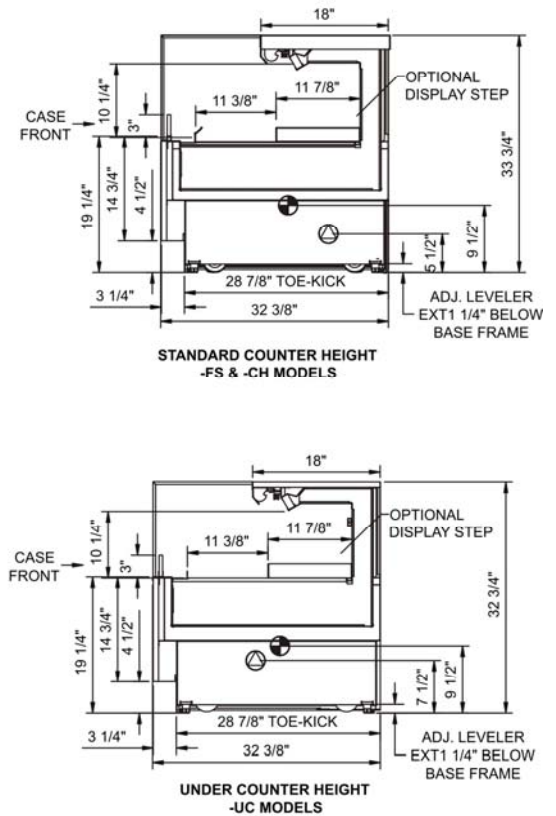
PLAN VIEW



NOTE: ALL DIMENSIONS APPROXIMATE

- ELECTRICAL JUNCTION BOX (SUPPLIED WITH 6" LEADS OR POWER CORD).
- REMOTE FLOOR SINK & UTILITIES ACCESS AREA.
- LOCATION OF DRAIN TUBE FOR REMOTE REF. ONLY (SUPPLIED WITH 3/4" OR 1 1/2" PVC TUBE).
- SELF-CONTAINED CASE SERVICE ACCESS AREA.
- REFRIGERATION LINE CONNECTION.
- DRY CASE SERVICE ACCESS AREA.

SIDE VIEW



**STANDARD COUNTER HEIGHT
-FS & -CH MODELS**

**UNDER COUNTER HEIGHT
-UC MODELS**

Model Technical Specifications

Model	L"	L1"	L2"	System Circuit Volts			Phs	Freq	Amps ***	Watts	Wires	NEMA Plug	SST	BTUH	Ship Wt
CO33R	N/A	36.25	17.00	Remote(Type I)	Circuit #1	110-120	1	60	1.12	36	2+G	Leads Multiple	20.00	1650	600
				Remote(Type II)	Circuit #1	110-120	1	60	1.12	42	2+G	Leads Multiple	20.00	1975	
				Self-Contained	Circuit #1	110-120	1	60	10.98	1,114	2+G	5-15P or L5-15P	N/A	N/A	
CO43R	N/A	47.25	22.50	Remote(Type I)	Circuit #1	110-120	1	60	1.14	40	2+G	Leads Multiple	20.00	1875	650
				Remote(Type II)	Circuit #1	110-120	1	60	1.14	40	2+G	Leads Multiple	20.00	2225	
				Self-Contained	Circuit #1	110-120	1	60	11.70	1,241	2+G	5-15P or L5-15P	N/A	N/A	
CO53R	N/A	59.25	28.50	Remote(Type I)	Circuit #1	110-120	1	60	1.22	52	2+G	Leads Multiple	20.00	2375	700
				Remote(Type II)	Circuit #1	110-120	1	60	1.22	52	2+G	Leads Multiple	20.00	2800	
				Self-Contained	Circuit #1	110-120	1	60	14.58	1,446	2+G	5-20P or L5-20P	N/A	N/A	
CO63R	N/A	71.25	34.50	Remote(Type I)	Circuit #1	110-120	1	60	1.76	107	2+G	Leads Multiple	20.00	2925	850
				Remote(Type II)	Circuit #1	110-120	1	60	1.51	69	2+G	Leads Multiple	20.00	3450	
				Self-Contained	Circuit #1	110-120	1	60	14.97	1,479	2+G	5-20P or L5-20P	N/A	N/A	

*** Does not include electric defrost on freezer models.

Important Notes:

- 1) ELECTRICAL NOTE: If GFCI is required, a GFCI breaker MUST be used in lieu of a GFCI receptacle
- 2) 33" Minimum entry door clearance required (w/out shipping skid)
- 3) Performance issues (product temperatures, water on floor, etc.) caused by adverse conditions are not covered by warranty.
- 4) Keep unit at least 15' from exterior doors, overhead HVAC vents, or any air curtain disruption.
- 5) Do not expose unit to direct sunlight or any heat source (ovens, fryers, etc.).

Regulatory Approvals:

All Models
 Accordance with AHRI Std 1200
 ETL Listed to UL 471
 ETL Listed to CAN/CSA 22.2 No. 120
 ETL Sanitation to NSF 7



In Accordance with
AHRI Std 1200

DOE 2012
 Energy Efficiency
 Compliant

Note: Information is subject to change at any time.
 Visit www.structuralconcepts.com for the most current specs.

Revised 9/18/2015

20030431

888 E. Porter Rd.
 Muskegon, MI 49441
 Ph. 231-798-8888
 Fx. 231-798-4960
www.structuralconcepts.com

**Structural
 Concepts®**