

RL-30 Automatic Undercounter Dishwasher

- Automatic, hot water sanitizing undercounter dishwasher with timed wash and rinse cycle. Fully automatic operation with power on/off button.
- Capacity is 30 racks per hour or 750 dishes per hour.
- 0.79 gallons per rack final rinse consumption
- Energy efficient
- Only requires a 30 amp circuit
- TempGuard™ final rinse temperature control ensures sanitized ware
- Built-in automatic chemical dispensing pumps
- Included chemical containers are easily removed and refilled from the front



Superior cleaning action with 7 bayonet style wash arms with 42 fixed wash jets.



Chemical levels are always viewable and chemical replacement easily accessible with front mounted containers.

STANDARD FEATURES

- 7 bayonet style wash arms with 42 fixed wash jets
- 6 upper rinse nozzles
- 8 lower revolving rinse jets
- Fully automatic operation
- Independent wash and rinse systems
- Automatic tank fill
- Continuous wash cycle
- Electric immersion tank heat: 2.8 kW
- Low water protection for heater
- TempGuard™ final rinse temperature control
- Thermostatic controls for the wash tank and final rinse heaters
- Built-in electric booster: 3.5 kW (70°F rise)
- Only requires a 30 amp circuit
- Motor overload protection
- Double wall construction for noise reduction and thermal insulation
- Deep drawn side walls, wash tank, door and rack guides for easy cleaning
- Door interlock safety switch
- Flexible water connection
- Single point electrical connection for motor, controls, heater and booster
- Built-in automatic chemical dispensing pumps: auto-priming detergent pump for high-temperature commercial dishwashing liquid and manual priming rinse-aid pump
- Chemical levels viewable from the front
- Pressure reduction valve at inlet connection with in-line strainer
- Timed pumped drain for complete or partial draining of wash tank
- Passive food soil strainer system with s/s circular scrap screen
- Connects to standard air gap drain
- 2 plastic 20" x 20" racks (1 plate, 1 silver)

OPTIONS

- Additional plastic 20" x 20" rack
- Drain quench system
- 6" stand
- 17" stand

AUTOQUOTES



RL-30

Capacity Per Hour	30 racks 750 dishes 68 meals
Tank Capacity	7.4 gallons
Motor Size	1hp (wash)
Electric Usage	2.8 kW wash tank 3.5 kW built-in booster (40°-70° rise) 4.2 kW maximum operating
Water Inlet Temperature	110°F to 140°F
Final Rinse Peak Flow at 20 psi min.	4.75 gallons/minute
Final Rinse Consumption at 20 psi min.	23.8 gallons/hour 0.79 gallons/rack
Exhaust Hood Requirement	None
Time Cycle	120 seconds
Peak Rate Drain Flow	9 gallons/minute
Shipping Weight	165 lbs.
Current Draw Amps	Electric with Built-in Booster
208-240/1/60	18-20

SPECIFICATIONS

CONSTRUCTION- Machine wash tank, casing and rinse pipes are made of 304 stainless steel. The polypropylene wash manifold, arms and jets are heat , alkali and rust resistant.

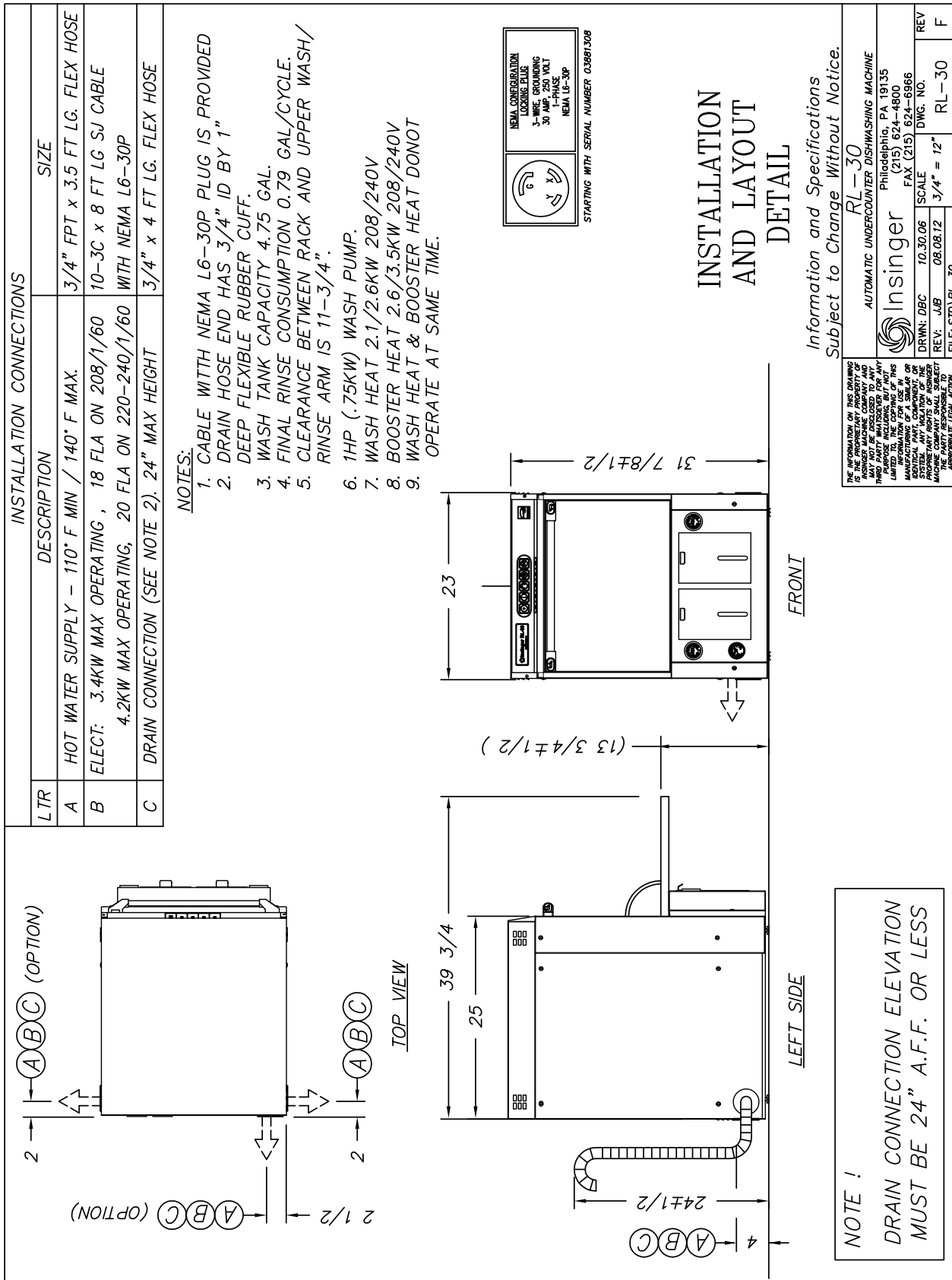
CONTROLS- Front mounted controls are easy to read with indicator lights for power heat and drain. Control components mounted in splash-proof box. Box is on slides for easy service.

WASH/RINSE SYSTEM- 42 fixed high volume spray nozzles, 14 full coverage rinse nozzles.

DRAIN SYSTEM- Separate drain pump lifts up to 24 inches above floor level. Connection to be open drain with air gap. Dishwasher drain system can not be tied into garbage disposal.

INTERNAL HEIGHT- 11 1/2" inches.

Note: Due to product improvement we reserve the right to change information and specifications without notice.



THE INFORMATION ON THIS DRAWING IS THE PROPERTY OF INSINGER MACHINE COMPANY AND IS NOT TO BE DISCLOSED TO ANY OTHER PARTY FOR ANY PURPOSE INCLUDING, BUT NOT LIMITED TO, REPRODUCTION OR MANUFACTURING OF A SIMILAR OR IDENTICAL MACHINE OR SYSTEM. ANY VIOLATION OF THIS SYSTEM SHALL BE SUBJECT TO THE PARTY RESPONSIBLE TO APPROPRIATE LEGAL ACTION.	
RL-30 AUTOMATIC UNDERCOUNTER DISHWASHING MACHINE	
Philadelphia, PA 19135 (215) 624-4800 FAX (215) 624-6966	
DRWN: DBC	SCALE: 3/4" = 12"
REV: JAB	08.08.12
FILE: STD\RL-30	DWG. NO. RL-30
REV	F

Contact Insinger Sales at 800-344-4802 for an Installation Drawing Specific to Your Application
 This drawing is available on the Insinger Web site at www.insingermachine.com

RL-30

Note: Due to product improvement we reserve the right to change information and specifications without notice.