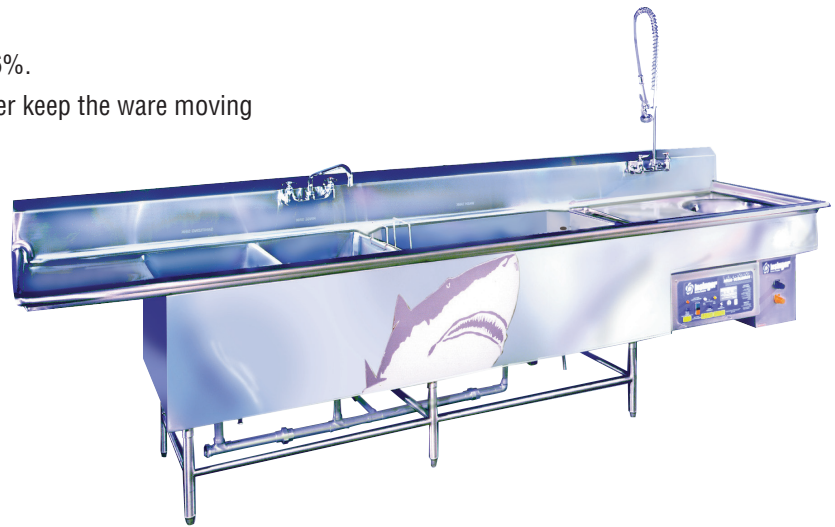


QuadJet Aqua-Scrubber Pot and Pan Washing System

- Automatic scrub sink reduces labor costs up to 56%.
- Innovative angled corners with 2 jets in each corner keep the ware moving
- No corners = No jams
- 2 hp TEFC pump
- Custom build to your application or choose from 2 pre-engineered systems



STANDARD FEATURES

- Heavy duty pump with a 2 hp TEFC motor
- Basket style high capacity lever action waste drain
- Easy clean seamless front skirt
- Fast flow mixing faucets
- Single point electrical connection: motor, controls, heater
- Stainless steel utensil basket
- Dual water temperature settings 110 low/130 high
- 2.5 kW heater with low water protection and dual temperature control
- Welded support legs with s/s feet
- 300 series stainless steel
- NEMA 4X control panel enclosure

OPTIONS

- Undershelf on clean end drain board
- Sink overflows
- 1 to 8 hour pump timer
- Scrap trough in drain board
- Overshelf with mounting brackets (12" increments, 60" and up)
- End splash
- Disposal and cone (in soiled drain board, 48" minimum length)
- Hot water sanitizing booster heater
- Scrapper drain board with pre-rinse faucet
- Shelves (cantilevered or wall mounted)

Aqua-Scrubber



AUTOQUOTES

Motor Size	2 hp
Heater Size	2.5 kW
Shipping Weight	Dash 109- 557 lbs. Marathon 140- 650 lbs.

Current Draw Amps			
	Heater	Pump & Controls	Total
208/1/60	12.0	9.6	21.6
220-240/1/60	10.9	8.9	19.8
208/3/60	6.9	5.9	12.8
220-240/3/60	6.3	5.6	11.9
440-480/3/50	3.1	2.8	5.9

SPECIFICATIONS

CONSTRUCTION- Entire unit constructed of 300 series polished stainless steel.

SINKS AND DRAINBOARDS- Constructed of 14 gauge s/s. All interior corners are covered to 3/4" radius. Top is 14 gauge s/s all welded with 11" high splash on front and sides with a 1 3/4" rolled edge.

WASH SINK- Consists of side mounted intake manifold and specially designed nozzles strategically placed in corners for maximum scrubbing action. Intake manifold includes hinged access panel to facilitate cleaning of the intake chamber, heater and probes.

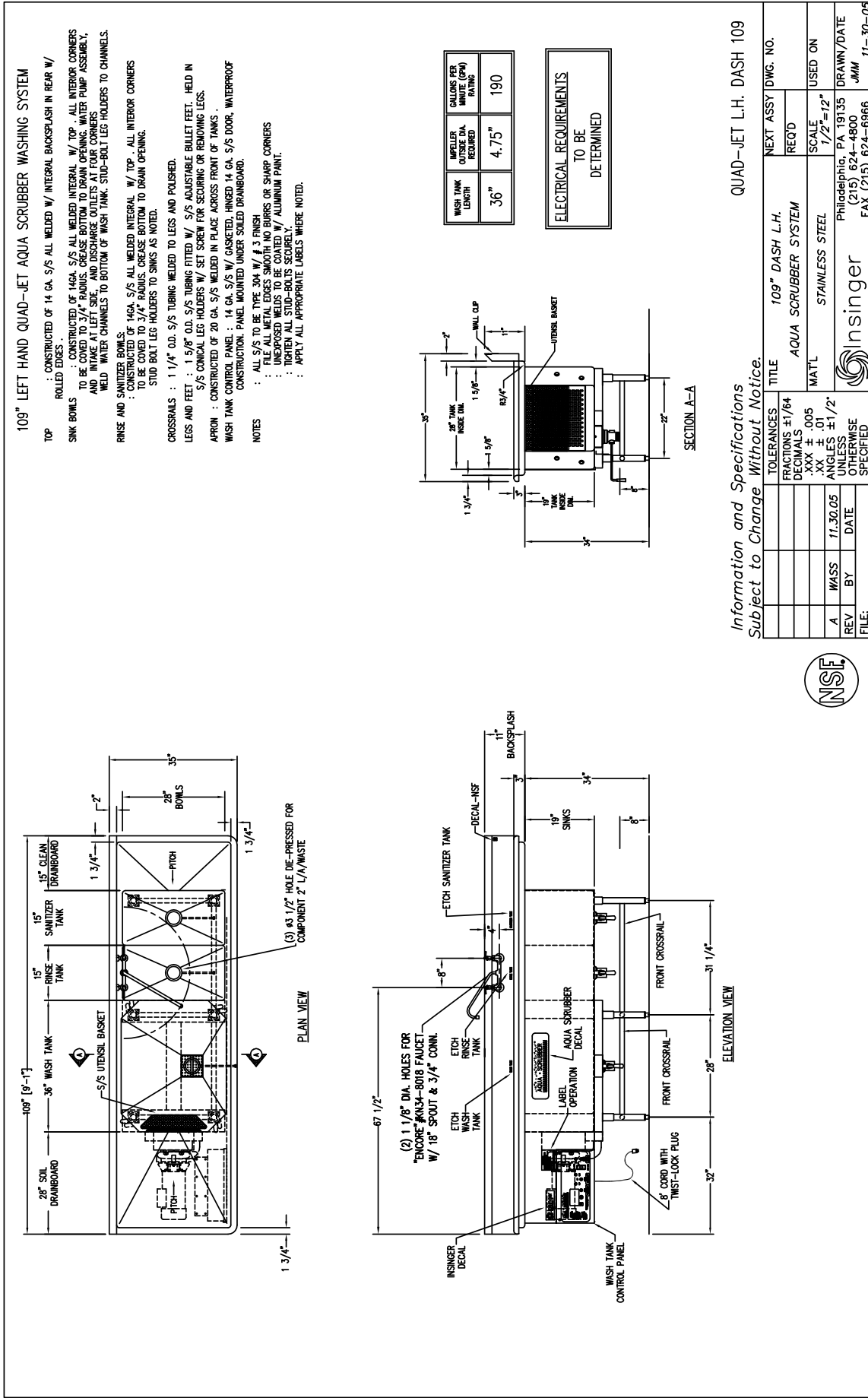
PUMP- The pump is heavy duty stainless steel construction with a 4" diameter intake and 3" diameter discharge. The motor is 2 hp totally enclosed, fan cooled with permanently sealed bearings.

SUPPORT- The wash sink is supported by heavy gauge stainless steel channels welded to the underside of the sink. H frame leg assemblies are removable and have stainless steel adjustable bullet feet.

CONTROL PANEL- Control enclosure is made of 300 series stainless steel, completely welded and waterproof (NEMA 4X). On/off power switch, dual water temperature switch (low and high), on/off pump motor switch and reset switch. Heavy duty pump contactor and overload. Heavy duty grounded plug. Controls labeled in English and Spanish.

PRE-ENGINEERED SYSTEMS- The Dash 109 and Marathon 140.

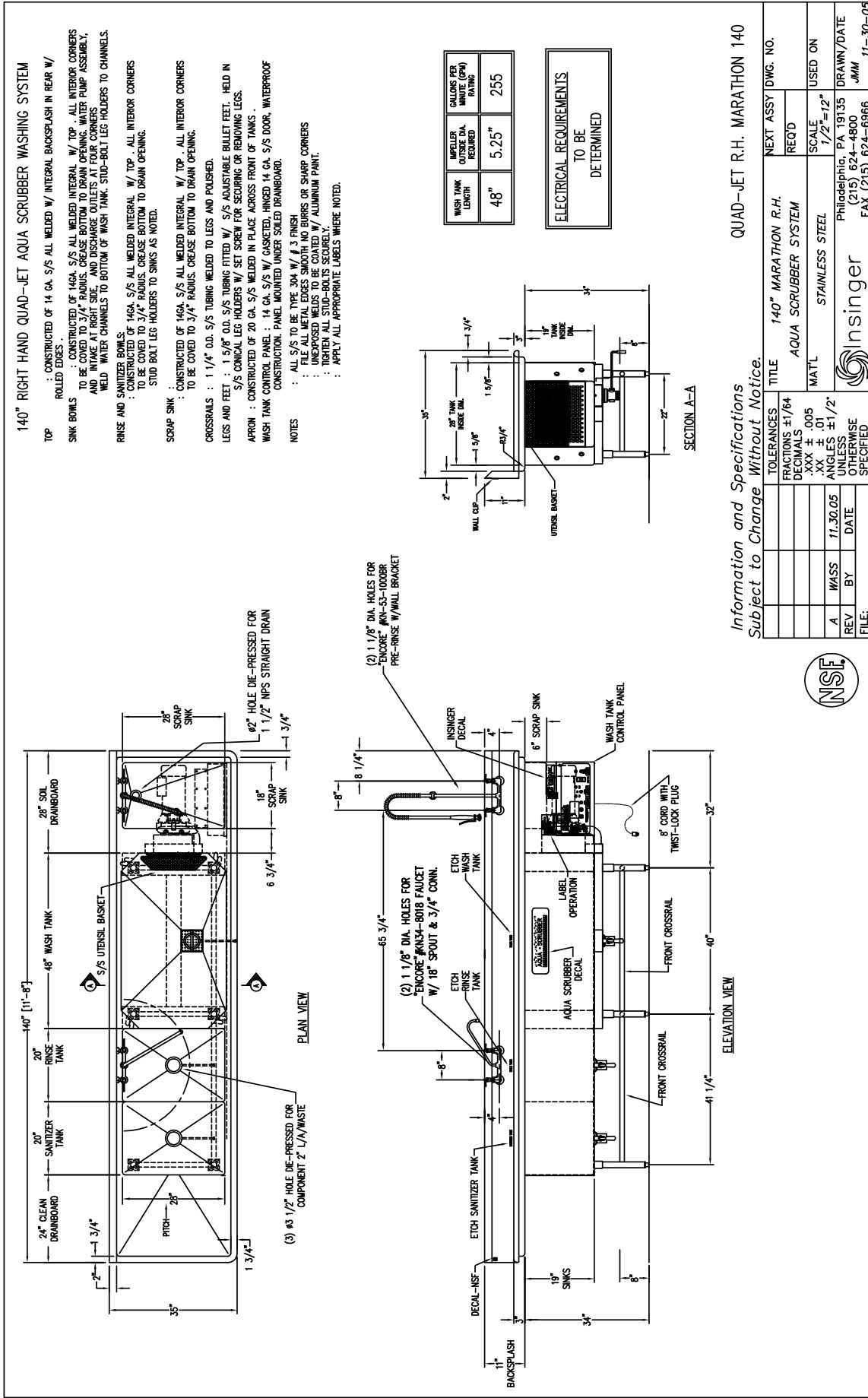
Note: Due to product improvement we reserve the right to change information and specifications without notice.



Information and Specifications Subject to Change Without Notice.

TOLERANCES ±1/64	TITLE	109" DASH L.H. AQUA SCRUBBER SYSTEM	NEXT ASSY DWG. NO.
FRACTIONS ±.005	MATL	STAINLESS STEEL	REQ'D
DECIMALS .XX ±.01	SCALE	1/2" = 12"	USED ON
ANGLES ±1/2° UNLESS OTHERWISE SPECIFIED	DATE	11.30.05	DRAWN/DATE
REV BY	FILE:	Insinger	JMM
4		Philadelphia, PA 19135	(215) 624-4800
			FAX (215) 624-6966
			11-30-05



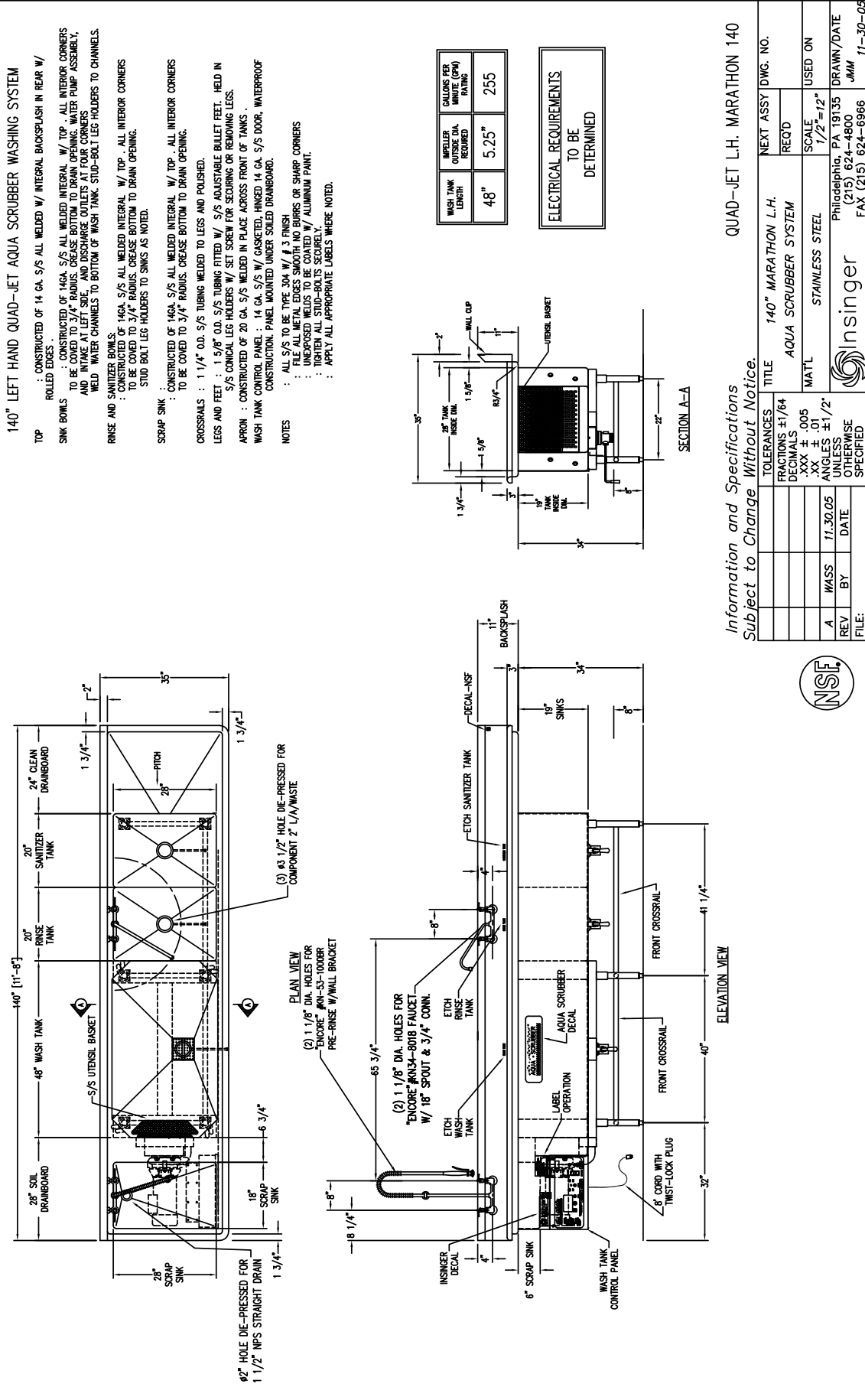


Information and Specifications Subject to Change Without Notice.

TOLERANCES	±1/64"	TITLE	140" MARATHON R.H. AQUA SCRUBBER SYSTEM	NEXT ASSY DWG. NO.	
FRACTIONS	±.005	MATL	STAINLESS STEEL	REQ'D	
DECIMALS	.XX ±.01	SCALE	1/2" = 12"	USED ON	
ANGLES	±1/2°	PHILADELPHIA, PA 19135		DRAWN/DATE	JMM
UNLESS OTHERWISE SPECIFIED		INSINGER		FAX (215) 624-6966	11-30-05
REV	BY	DATE			
4	WASS	11.30.05			

QUAD-JET R.H. MARATHON 140





Information and Specifications Subject to Change Without Notice.

TITLE		140" MARATHON L.H. AQUA SCRUBBER SYSTEM	
NEXT ASSY DWG. NO.		REQ'D	
MATERIAL		STAINLESS STEEL	
SCALE		1/2" = 12"	
USED ON		DRAWN/DATE	
FILE:		JMM 11-30-05	

