

# Champion®

The Dishwashing Machine Specialists

Project \_\_\_\_\_  
Item No. \_\_\_\_\_  
Quantity \_\_\_\_\_

PP3 TASKMASTER

## STANDARD FEATURES

- Type 304 polished stainless steel construction
- 14 gauge stainless tanks and drain boards
- 11" high x 2-1/2" deep back splash
- Twist handle drains
- Stainless steel legs and cross rails
- Stainless steel adjustable bullet feet
- Stainless steel pump and impeller
- Rear discharge
- Removable strainer plates
- One 3 Hp fully enclosed wash pump motor with permanently sealed bearings
- Motor overload protection, manual reset
- Low water protection for wash pump motor
- 3,000 watt wash tank heater
- 1 year parts and labor on pumps and control panel



**PP3**  
**Taskmaster**  
Power Wash Sink System

## OPTIONS & ACCESSORIES

- 480/60/3 electrical
- Utensil basket
- Folding wash tank cover
- Sheet pan racking system
- Pot and pan overhead shelf with hooks
- Table mounted over shelf
- 1/2" pre-rinse sprayer
- 3/4" fill faucet
- Direction from soiled to clean end (select one)
  - Left to right
  - Right to left

## SPECIFIER STATEMENT

Specified unit will be Champion model PP3 Taskmaster Power Wash Sink System.

Features (1) 3 Hp wash pump motor, taskmaster control system, stainless steel pump and impeller.

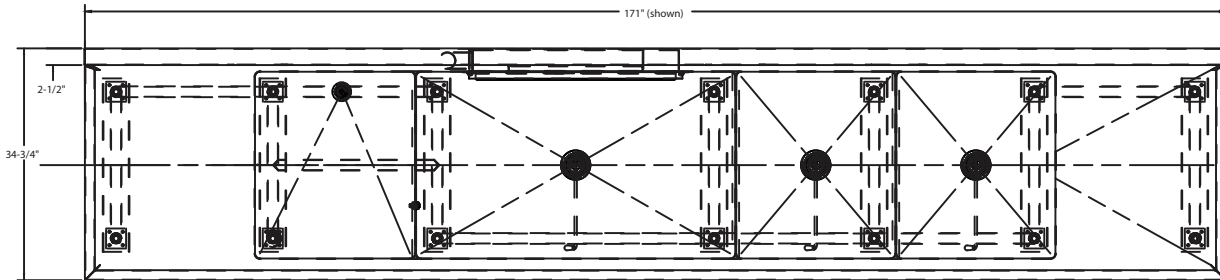
Champion Industries, Inc.  
3765 Champion Blvd, Winston-Salem, NC 27105  
Tel: 336/661-1556 Fax: 336/661-1979

2674 N. Service Road  
Jordan Station, Ontario, Canada L0R 1S0  
Tel: 905/562-4195 Fax: 905/562-4618

[www.championindustries.com](http://www.championindustries.com)

(Consult the factory for custom lengths & widths)

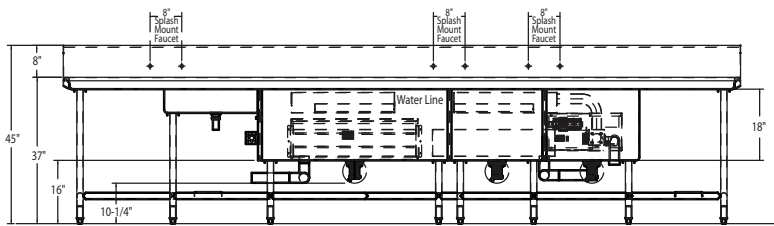
Dimensions shown in inches



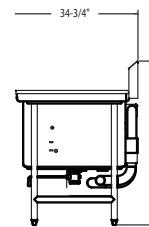
**Plan View**

Note: Either the soiled drain board or the scrap sink must be at least 24" to accommodate the mechanical components

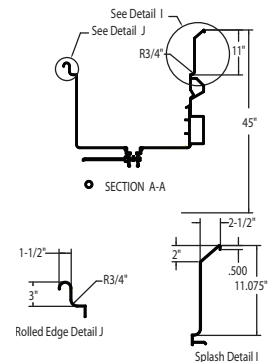
- |  |  |   |   |  |  |   |  |
|--|--|---|---|--|--|---|--|
| <p><b>A</b></p> <p><b>Edge Type</b></p> <input type="checkbox"/> 1-1/2" Rolled<br><input type="checkbox"/> 2-1/2" Splash | <p><b>B</b></p> <p><b>Drain Board</b><br/>By nominal inch</p> <input type="checkbox"/> 12"<br><input type="checkbox"/> 18"<br><input type="checkbox"/> 20"<br><input type="checkbox"/> 24"<br><input type="checkbox"/> 36"<br><input type="checkbox"/> 42"<br><input type="checkbox"/> 48"<br><input type="checkbox"/> 54"<br><input type="checkbox"/> 60"<br><input type="checkbox"/> w/Disposer Collar | <p><b>C</b></p> <p><b>Scrap Sink</b></p> <input type="checkbox"/> 24"<br><p><b>Custom</b></p> <input type="checkbox"/> w/Scrap Basket | <p><b>D</b></p> <p><b>Wash Tank</b></p> <input type="checkbox"/> 36"<br><input type="checkbox"/> 42"<br><input type="checkbox"/> 48"<br><input type="checkbox"/> 60" <p><b>Options</b></p> <input type="checkbox"/> Utensil Basket<br><input type="checkbox"/> Sheet Pan Racking System | <p><b>E</b></p> <p><b>Rinse Sink</b></p> <input type="checkbox"/> Omit<br><input type="checkbox"/> 20"<br><input type="checkbox"/> 24"<br><input type="checkbox"/> 36" | <p><b>F</b></p> <p><b>Sanitizer Sink</b></p> <input type="checkbox"/> Omit<br><input type="checkbox"/> 20"<br><input type="checkbox"/> 24"<br><input type="checkbox"/> 36" | <p><b>G</b></p> <p><b>Drain Board</b></p> <input type="checkbox"/> Omit<br><input type="checkbox"/> 12"<br><input type="checkbox"/> 18"<br><input type="checkbox"/> 20"<br><input type="checkbox"/> 24"<br><input type="checkbox"/> 36"<br><input type="checkbox"/> 42"<br><input type="checkbox"/> 48"<br><input type="checkbox"/> 54"<br><input type="checkbox"/> 60" | <p><b>H</b></p> <p><b>Edge Type</b></p> <input type="checkbox"/> 1-1/2" Rolled<br><input type="checkbox"/> 2-1/2" Splash |
|--|--|---|---|--|--|---|--|



**Front View**



**Side View**



**Detail Views**

PP3			
Electrical Specifications	Rated Amps	Minimum Supply Circuit Ampacity	Maximum Overcurrent Protective Device
208/60/1	25	35	35
240/60/1	26	35	35
208/60/3	17	25	25
240/60/3	18	25	25
480/60/3	8	15	15

PP3 No Heat			
Electrical Specifications	Rated Amps	Minimum Supply Circuit Ampacity	Maximum Overcurrent Protective Device
208/60/1	11	20	20
240/60/1	10	20	20
208/60/3	8	15	15
240/60/3	8	15	15
480/60/3	4	10	10

**Warning:** Plumbing and electrical connection should be made by qualified personnel who will observe all the applicable plumbing, sanitation, and safety codes and the National Electrical Code.

Utilities	
<b>1</b>	<b>Electrical</b> (see box)
<b>2</b>	<b>Hot Water</b> 3/4" NPT connection for mixing faucet. 1/2" NPT connection for pre-rinse sprayer.
<b>3</b>	<b>Cold Water</b> 3/4" NPT connection for mixing faucet. 1/2" NPT connection for pre-rinse sprayer.
<b>4</b>	<b>Drain</b> A. Sink drains, 2" NPT B. Scrapper drain, 1-1/2" NPT (25-5/8" AFF)

SPECIFICATIONS	
Motor	1 x 3 Hp
Power Requirements	(see charts)
Direction of Operation	R-L or L-R

Note: 3HP only available in 3 phase; 2 HP only available in 1 phase

Due to an ongoing value analysis program at Champion, specifications contained in this catalog are subject to change without notice.

Champion Industries, Inc., 3765 Champion Blvd, Winston-Salem, NC 27105 • 336/661-1556 • Fax: 336/661-1979 • www.championindustries.com  
Moyer Diebel, 2674 North Service Rd., Jordan Station, Ontario, Canada L0R 1S0 • Tel: 905/562-4195 • Fax: 905/562-4618 • www.moyerdiebellimited.com