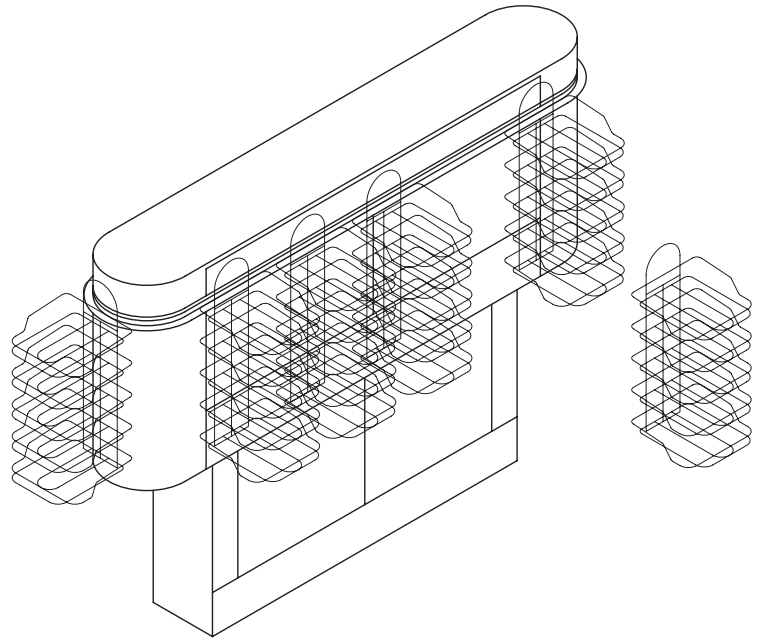


Conveyors Bus Trac™ Conveyor Systems model BT

Description:

The AVTEC Bus Trac™ is a soiled tray accumulator, utilizing vertical accumulation of soiled trays to form a “buffer” between the dining area and patrons returning trays and the dish room and scrapping personnel. The system consists of a series of rotating tray carrier baskets, either three, four or five tier high. The unit is available in any number of lengths, depending on the sizing requirements.



Specifications:

Provide AVTEC UL listed & NSF approved Bus Trac™ Soiled Tray Return System, Model BT. System designed to be mounted on stainless steel legs, pedestal base or wall. Overall size shall be (56”) wide x long, (minimum length 9’-0”), with tray holding capacity. Main housing shall be 18” wide x long. (minimum length 5’-10”).

System shall consist of a series of rotating removable tray carriers, with inserts, hangers and UHMW self-lubricating glides cantilevered from a 1/8” steel track, attached to a concealed closed-path drive system. Unit to have removable stainless steel side panels for access to drive components.

Main frame to be constructed of stainless steel structural channel, with 16 gauge, 300 series stainless steel enclosure and 18 gauge, removable access panels.

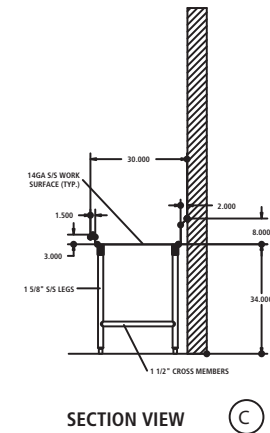
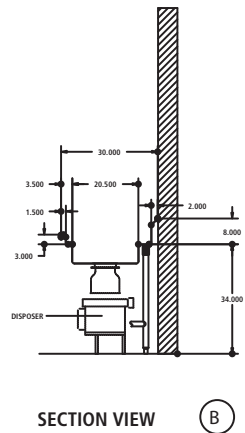
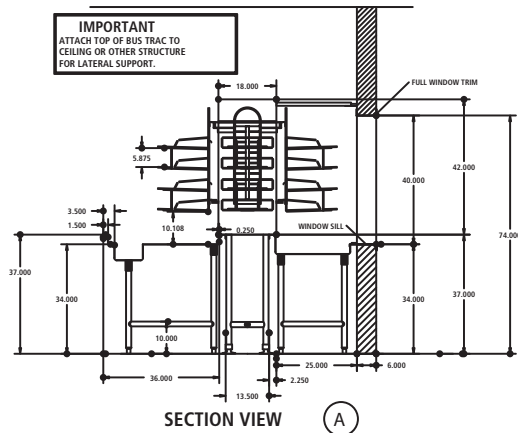
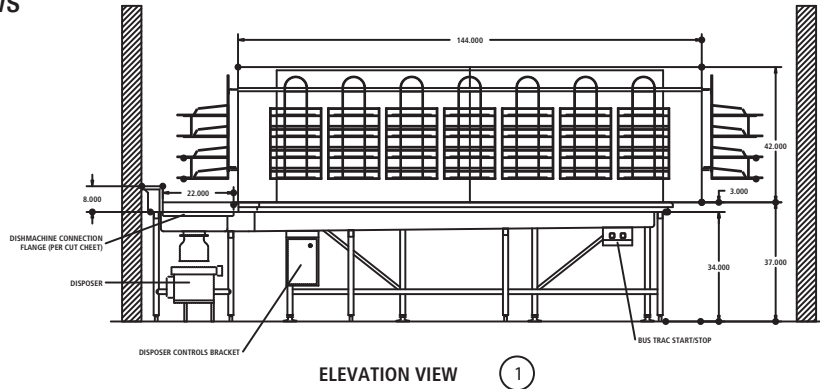
Tray carriers shall be (3) (4) (5) tier with buff colored molded ABS plastic insert on bottom tier, and shall be easily removable, without tools, and shall be capable of being cleaned in any conveyor style dish machine. Carriers shall be constructed of 1/4” electro-polished stainless steel wire; hangers shall be constructed of 3/8” stainless steel wire, with spacer wheel at bottom.

Drive system shall consist of motor, drive chain, axle and sprockets powering a steel conveyor chain rotating in a concealed, milled UHMW inner channel and attached to individual tray carrier hangers with Chain tabs and UHMW glides. Provide 2” chain take-up, sprocket adjustment and 3% chain stretch allowance utilizing special offset links.

Motor to be (3/4) (1) hp, 120 VDC, with variable speed drive and permanently lubricated bearings. Provide gasketed stainless steel control panel, (10” x 15” x 6”) with SCR solid state control and infinite speed dial and hour meter. Mandatory supervision of assembly and start-up by factory authorized technician is required. Two weeks written notice of installation time required.

3/4 HP drive motor, 15 amp 120/1F, incoming electrical service to AVTEC main control panel. Interconnection of 120 volt motor control circuit from control panel to drive motor. Interconnection of 120 volt circuit from start/stop switch to main control panel. Interconnection of 120 volt circuit from control panel to beam limit switch.

Front & Side Views



Bus Trac Application Data

Number of Tray Carriers

*OA Length	Housing Length	Optional Base Length	No. of Tray Hgrs.	2 Tier	3 Tier	4 Tier
9'	5' 10"	4' 2"	8	16	24	32
10' 6.5"	7' 4.5"	5' 8.5"	10	20	30	40
12' 1"	8' 11"	7' 3"	12	24	36	48
13' 7.5"	10' 5.5"	8' 9.5"	14	28	42	56
15' 2"	12'	10' 4"	16	32	48	64
16' 8.5"	13' 6.5"	11' 10.5"	18	36	54	72
18' 3"	15' 1"	13' 5"	20	40	60	80
19' 9.5"	16' 7.5"	14' 11.5"	22	44	66	88
21' 4"	18' 2"	16' 6"	24	48	72	96
22' 10.5"	19' 8.5"	18' .5"	26	52	78	104
24' 5"	21' 3"	19' 7"	28	56	84	112
26'	22' 10"	20' 2"	30	60	90	120
27' 6.5"	24' 4.5"	22' 8.5"	32	54	96	128
30' 7.5"	27' 5.5"	25' 9.5"	36	72	108	144
33' 8.5"	30' 6.5"	28' 10.5"	40	80	120	160
36' 9.5"	33' 7.5"	31' 11"	44	88	132	176

*Required 5" clearance each side.

