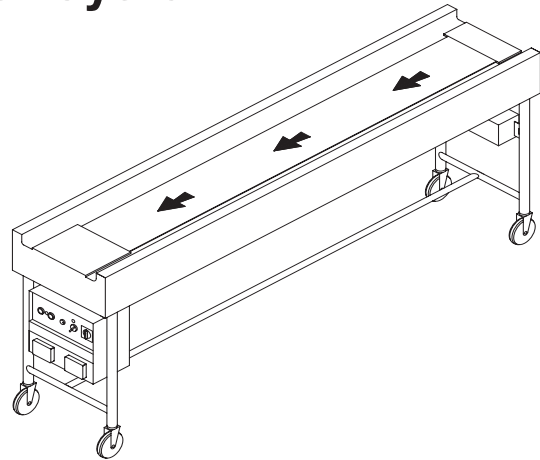


# Conveyors Fabric Belt Conveyor System model CFBS

## Description:

The AVTEC Model CFBS is a fabric belt conveyor utilized for tray or plate assembly lines. The slim-line low profile design allows for only an 8 5/8" conveyor housing. The conveyor uses a PVC coated fabric belt to move trays or plates through the tray assembly or banquet plating line. Belt material is durable and easily cleaned. Unit may be specified with a Modular Energy Distribution System for powering ancillary equipment, such as hot food tables or refrigerated units. This design is utilized for lengths up to 15 feet in length.



## Specifications:

Provide AVTEC tray/plate make-up conveyor system, Model CFBS. Unit shall be the size and shape as shown in project drawings. Top and slide bed shall be constructed of 14 gauge 300 series stainless steel with #4 mill finish. Drive housing shall be of uni-body construction, completely constructed of 300 series stainless steel. Legs shall be 1 5/8" diameter stainless steel with 1 1/2" diameter welded cross members for support. Unit is driven by a 4 1/2" diameter drive pulley mounted on stainless steel bearings and shafts utilizing slip collar in lieu of keyways. No chain or sprockets required. Belt returns on support roller return system. Low-profile housing includes belt scraper and is designed with access panels for inspection of chamber and comes complete with stainless steel latches to seal openings and removable scrap basket for waste. Belt is to be 10.75" wide PVC coated fabric material, easily cleaned and connected with stainless steel pin assembly. Tail section includes auto-tensioning device to keep constant equal tension on the belt. Motor control panel to be designed with main service disconnect switch, variable speed controls and of sealed water-tight construction. Conveyor is designed to include a photo electric accumulation switch at terminal end of unit to shut down system when conveyor is full.

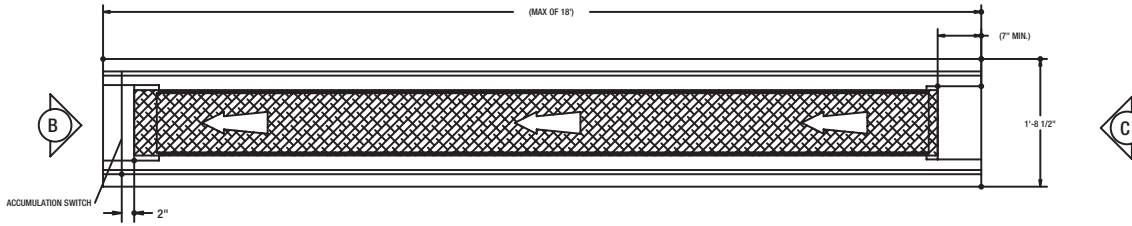
## Standard Features:

- Tail auto-belt take-up
- Hinged safety plate on drive opening
- 1 5/8" S/S legs with 1 1/2" S/S crossmembers
- Fabric belt scraper with removable scrap basket
- Limit switch
- Main control panel with start/stop, speed control, limit switch, and main disconnect
- PVC return rollers.
- 16 Ga S/S construction
- 4.5" High output belt drive roller- the belt rides on an anti-spill raised edge, for easier cleaning and better performance

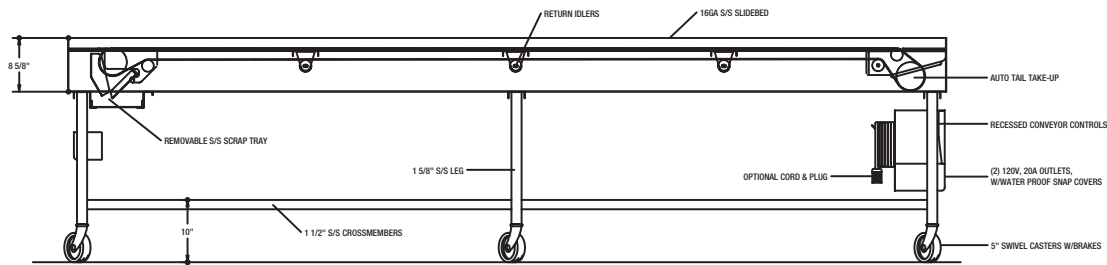
## Optional Accessories:

- Momentary run foot switch
- Modular energy distribution system
- Casters, bullet or flange feet
- Cord and receptacle
- Floor box
- (2) 20 Amp duplex convenience outlets with water proof cover on each end
- Stainless steel lift-off cover for covering unit with handles
- Starter Station

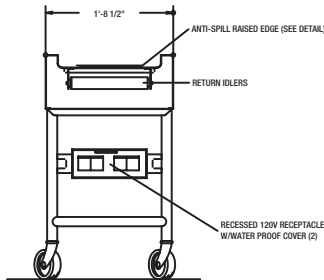
Front, Top & Side Views



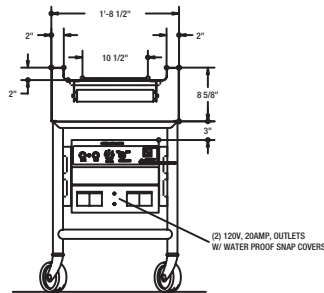
PLAN VIEW



ELEVATION VIEW



SECTION VIEW



SECTION VIEW

