



CHURCHILL



Stonecast[®]

Rustic Charm Revived

USA



Stonecast[®]

Stonecast is an exciting collection of rustic and hand decorated products from Churchill, inspired by the changing seasons and fresh ingredients. This rustic collection is revived from a design in the Churchill archives, dating back to the days of the James Broadhurst factory. Stonecast is now available in nine stunning colours, hand painted and then hand finished with a fine speckle and rustic edge in a rich golden brown. The nature of the manufacturing process means that every piece will be slightly different, adding to the overall charm of the product.



MADE IN ENGLAND



Visit our YouTube channel **Churchill1795** to watch our official Stonecast video.

CHURCHILL[®] super vitrified



A celebration of *the seasons*

Stonecast is directly inspired by how the seasons shape our landscape, creating an abundance of seasonal colour tones. The range of nine hand applied colours are key in making the collection as versatile as possible. Stonecast complements all types of foods and adds value and authenticity to the overall presentation.



Seasonal and Fresh

Spring



Rustic charm is brought to life with a stunning hand painted colourwash in both soft Duck Egg Blue and warm Nutmeg Cream, with the golden brown speckle and hand applied edge. Colours complement the ingredients and tones of spring months, as the vibrancy of seasonal food intensifies. Duck Egg Blue and Nutmeg Cream are extremely versatile colours and both harmoniously sit in casual and fine dining settings.





Showcase fresh ingredients

Summer

Rich Blueberry and Vibrant Cornflower Blue are inspired by the warmth of the summer months and the radiant colours of the season. Both shades look stunning on their own or mixed with additional Stonecast colours. Barley White is the ideal platform for food presentation with a hint of rustic charm, it is also inspired by the changing landscape of spring into summer.



Rustic Charm Revived

Autumn



Seasonal inspiration is behind the rich autumnal warmth of Stonecast Spiced Orange and Mustard Seed, symbolic of the dramatic autumn hues. Hand decorated, making each piece individual, both colours are stunning whether used on their own or mixed with additional Stonecast, they are perfect colour additions to any menu and the ideal platform for showcasing the freshest ingredients.





Creative and versatile

Winter

Peppercorn Grey is reminiscent of colours seen during the winter months and is the perfect canvas for the presentation of fresh, seasonal ingredients. The soft versatility of Peppercorn Grey complements both casual and fine dining settings. Make a statement with accent pieces in vibrant Berry Red, inspired by the richness of seasonal berries in winter.



Casual

Presentation





The ultimate *casual style*

Whatever your venue or style of food, Stonecast offers the perfect choice, allowing you to be individual. All colour options within the Stonecast range are ideal as stylish casual dining options as the rustic nature of the collection and versatility of each piece lends itself well to a wide variety of dishes. Add authenticity to the breakfast tabletop by combining colour and texture. The beverage items are the perfect complement, available in four colours - Duck Egg Blue, Barley White, Peppercorn Grey and Spiced Orange.



Relaxed and stylish *colour and texture*

British manufacturing and the rustic charm of Stonecast complement the ever increasing popularity for the provenance of food. The range of nine colours with delicate textures complement the vivid brightness of food to stunning effect. Bring authentic style to global cuisine by mixing and matching the range to create the ultimate contemporary look. Flexible Barley White cookware items are designed to complement the full Stonecast range - the ideal choice for relaxed, casual settings.





Premium
Canvas

Contemporary *elegance*



The range of neutral Stonecast colours with a unique speckled finish and golden edge band complement the colour and texture of food to stunning effect. The combination of innovative shapes, subtle decoration and sophisticated colours elevates Stonecast to a new level of premium dining. The perfect canvas for inspirational food presentation, showcasing a range of dishes in a stylish and contemporary way.

Sophisticated *fine dining*



The neutral Duck Egg Blue tone within the Stonecast range is the perfect solution for contemporary fine dining. The subtle colour combinations of Barley White and Duck Egg Blue, Peppercorn Grey and Nutmeg Cream create a visually exciting canvas for sophisticated and creative food presentation.





Barley White

Code: SWHS



COUPE PLATE
SWHSEV121 32.4cm 12³/₄"
 CTN QTY 6 +
SWHSEV111 28.8cm 11¹/₄"
 CTN QTY 12 +
SWHSEV101 26cm 10¹/₄"
 CTN QTY 12 +



COUPE PLATE
SWHSEVP81 21.7cm 8²/₃"
 CTN QTY 12 +
SWHSEVP61 16.5cm 6¹/₂"
 CTN QTY 12 +



LARGE COUPE BOWL
SWHSPLC21 31cm 12"
 240cl 84.5oz
 CTN QTY 6 +



COUPE BOWL
SWHSEVB91 24.8cm 9³/₄"
 113.6cl 40oz
 CTN QTY 12 +
SWHSEVB71 18.2cm 7¹/₄"
 42.6cl 15oz
 CTN QTY 12 +



ORGANIC ROUND PLATE
SWHSOG111 28.6cm 11¹/₂"
SWHSOG101 26.4cm 10³/₈"
 CTN QTY 12



ORGANIC ROUND PLATE
SWHSOG8 1 21cm 8¹/₄"
SWHSOG7 1 18.6cm 7¹/₄"
 CTN QTY 12



ORGANIC ROUND BOWL
SWHSOGB11 25.3cm 9³/₈"
 110cl 38oz
 CTN QTY 12



DEEP COUPE PLATE
SWHSPD271 28.1cm 11" H: 3.7cm
 CTN QTY 12 +
SWHSPD251 25.5cm 10" H: 3.5cm
 CTN QTY 12 +
SWHSPD221 22.5cm 8⁵/₈" H: 2.7cm
 CTN QTY 12 +



WIDE RIM BOWL
SWHSVWBL1 28cm 11"
 46.8cl 16.5oz
 CTN QTY 12 +
SWHSVWBM1 24cm 9¹/₂"
 28.4cl 10oz
 CTN QTY 12 +



TRIANGLE PLATE
SWHSTR121 31.1cm 12¹/₄"
 CTN QTY 6
SWHSTR101 26.5cm 10¹/₂"
 CTN QTY 12
SWHSTR9 1 22.9cm 9"
 CTN QTY 12
SWHSTR7 1 19.2cm 7³/₄"
 CTN QTY 12



TRIANGLE BOWL
SWHSTRB91 23.5cm 9¹/₄"
 60cl 21oz
SWHSTRB71 18.5cm 7¹/₄"
 37cl 13oz
SWHSTRB61 15.3cm 6"
 26cl 9oz
 CTN QTY 12



DEEP SQUARE PLATE
SWHSDS101 26.8cm 10¹/₂"
 CTN QTY 6



OBLONG PLATE
SWHSOP141 35 x 18.5cm
 14" x 7¹/₄"
 CTN QTY 6
SWHSOP111 29.5 x 15cm
 11³/₄" x 6"
 CTN QTY 12



OVAL COUPE PLATE
SWHSOP7 1 19.2cm 7³/₄"
 CTN QTY 12 +

NEW



OBLONG PLATTER
 No. 9 **SWHSXP141** 35.5 x 24.5cm
 13⁷/₈ x 9⁵/₈"
 CTN QTY 6

NEW



OBLONG PLATE
 No. 4 **SWHSXO141** 35.5 x 18.9cm
 13⁷/₈" x 7³/₈"
 CTN QTY 6
 No. 3 **SWHSXO111** 29.8 x 15.3cm
 11³/₄" x 6"
 CTN QTY 12
 No. 2 **SWHSXO101** 26.9 x 12.7cm
 10¹/₂" x 5"
 CTN QTY 12
 No. 1 **SWHSXO7 1** 20 x 12.1cm
 7²/₅" x 4¹/₄"
 CTN QTY 12

NEW



OBLONG PLATE
 No. 8 **SWHSOBL41** 30 x 19.9cm
 12" x 7⁴/₅"
 CTN QTY 6

NEW



OBLONG PLATE
 No. 7 **SWHSOBL31** 26.1 x 20.2cm
 10¹/₄" x 8"
 CTN QTY 12
 No. 6 **SWHSOBL21** 23.7 x 15.7cm
 9¹/₃" x 6¹/₈"
 CTN QTY 12
 No. 5 **SWHSOBL11** 15.4 x 12.6cm
 6" x 5"
 CTN QTY 12

Barley White

Code: SWHS



NOODLE BOWL
SWHNSDBL1 107.5cl 37.8oz
 H: 8cm
 Dia: 18.3cm
 CTN QTY 6



SOUP BOWL
SWHSRBL61 47cl 16oz
 H: 6.3cm 5 1/8"
 Dia: 13.2cm 2 1/2"
 CTN QTY 12



ZEST BOWL
SWHSZE121 34cl 12oz
 H: 6.5cm 4 7/8"
 Dia: 12.1cm 2 1/2"
 CTN QTY 12



RIPPLE CHIP MUG
SWHSRPCM1 28cl 10oz
 H: 9.5cm 3 7/8"
 Dia: 8.3cm 3 1/4"
 CTN QTY 12



RIPPLE DIP POT
SWHSRPD21 5.7cl 2oz
 H: 5.9cm 2 1/3"
 Dia: 5cm 2"
 CTN QTY 12



BARLEY WHITE INTERMEDIATE OVAL EARED DISH
SWHSIOEN1 23.2 x 12.5cm
 9 1/8 x 5"
 38cl 13.4oz
 CTN QTY 6
SWHSSOEN1 20.5 x 11.3cm
 8 1/8 x 4 5/8"
 25.5cl 9oz
 CTN QTY 6



BARLEY WHITE LARGE ROUND EARED DISH
SWHSLREN1 17.5 x 21.5cm
 7 x 8 1/2"
 59cl 20.8oz
 CTN QTY 6
SWHSSREN1 15 x 18cm
 5 7/8 x 7 1/8"
 30cl 10.6oz
 CTN QTY 6



BARLEY WHITE LASAGNE DISH
SWHSLASN1 16 x 12 x 5cm
 6 1/8 x 4 3/4 x 2"
 60cl 21.1oz
 CTN QTY 12



BARLEY WHITE RAMEKIN
SWHSLRKN1 9cm 3 1/2"
 19.5cl 6.9oz
 CTN QTY 24



BARLEY WHITE RAMEKIN
SWHSSRKN1 7cm 2 3/4"
 9cl 3.2oz
 CTN QTY 24



SAUCE DISH
SWHSSD3 1 9cl 3oz
 H: 4cm
 Dia: 8cm
 CTN QTY 12



CAPPUCCINO CUP
SWHSCB441 50cl 17.5oz
 H: 7cm
 Dia: 11.5cm
 CTN QTY 6
SWHSCB401 46cl 16oz
 H: 7cm
 Dia: 11cm
 CTN QTY 6



CAPPUCCINO CUP
SWHSCB281 34cl 12oz
 H: 6.5cm
 Dia: 11cm
 CTN QTY 12
SWHSCB201 22.7cl 8oz
 H: 5.5cm
 Dia: 9.5cm
 CTN QTY 12



SAUCER
SWHSCSS 1 15.6cm 6 1/4"
 CTN QTY 12
 (Fits SWHSCB281, SWHSCB201
 SWHSCB441 & SWHSCB401)



ESPRESSO CUP
SWHSCB91 10cl 3.5oz
 H: 5.5cm Dia: 6.5cm
 CTN QTY 12



ESPRESSO SAUCER
SWHSESS 1 11.8cm 4 1/2"
 CTN QTY 12
 (Fits SWHSCB91)



MUG
SWHSVM121 34cl 12oz
 H: 11cm
 Dia: 8cm
 CTN QTY 12



BEVERAGE POT
SWHSSB151 42.6cl 15oz
 H: 10.5cm
 CTN QTY 4
REPLACEMENT LID
SWHSRL151
 CTN QTY 6



JUG
SWHSSJ4 1 11.4cl 4oz
 H: 7cm
 CTN QTY 4



SUGAR BOWL
SWHSSGR1 22.7cl 8oz
 H: 6.2cm
 Dia: 9.8cm
 CTN QTY 12



SALT
SWHSSSA 1 7cm 2 1/2"
 CTN QTY 12
PEPPER
SWHSSPE 1 7cm 2 1/2"
 CTN QTY 12
BUD VASE
SWHSSBV 1 12.5cm 5"
 CTN QTY 6



Blueberry

Code: SBBS

NEW COLOUR



COUPE PLATE
SBBSEV111 28.8cm 11¼"
CTN QTY 12 ✦



COUPE PLATE
SBBSEV101 26cm 10¼"
CTN QTY 12 ✦



COUPE PLATE
SBBSEVP81 21.7cm 8⅔"
CTN QTY 12 ✦



COUPE PLATE
SBBSEVP61 16.5cm 6½"
CTN QTY 12 ✦



COUPE BOWL
SBBSEVB91 24.8cm 9¾"
113.6cl 40oz
CTN QTY 12 ✦



COUPE BOWL
SBBSEVB71 18.2cm 7¼"
42.6cl 15oz
CTN QTY 12 ✦



CHEFS' OBLONG PLATE
No. 4 **SBBSXO141** 35.5 x 18.9cm
13 ⅞" x 7 ⅝"
CTN QTY 6



CHEFS' OBLONG PLATE
No. 3 **SBBSXO111** 29.8 x 15.3cm
11 ¾" x 6"
CTN QTY 12



TRIANGLE BOWL
SBBSTRB91 23.5cm 9¼"
60cl 21oz
CTN QTY 12



TRIANGLE BOWL
SBBSTRB71 18.5cm 9¼"
37cl 13oz
CTN QTY 12



TRIANGLE BOWL
SBBSTRB61 15.3cm 6"
26cl 9oz
CTN QTY 12



TRIANGLE PLATE
SBBSTR121 31.1cm 12¼"
CTN QTY 6



TRIANGLE PLATE
SBBSTR101 26.5cm 10½"
CTN QTY 12



TRIANGLE PLATE
SBBSTR9 1 22.9cm 9"
CTN QTY 12
SBBSTR7 1 19.2cm 7¾"
CTN QTY 12



Duck Egg Blue

Code: SDES



COUPE PLATE
SDESEV121 32.4cm 12 3/4"
 CTN QTY 6 ✦
SDESEV111 28.8cm 11 1/4"
 CTN QTY 6 ✦
SDESEV101 26cm 10 1/4"
 CTN QTY 12 ✦



COUPE PLATE
SDESEVP81 21.7cm 8 2/3"
 CTN QTY 12 ✦
SDESEVP61 16.5cm 6 1/2"
 CTN QTY 12 ✦



LARGE COUPE BOWL
SDESPLC21 31cm 12"
 240cl 84.5oz
 CTN QTY 6 ✦



COUPE BOWL
SDESEVB91 24.8cm 9 3/4"
 113.6cl 40oz
 CTN QTY 12 ✦
SDESEVB71 18.2cm 7 1/4"
 42.6cl 15oz
 CTN QTY 12 ✦



ORGANIC ROUND PLATE
SDESOG111 28.6cm 11 1/4"
SDESOG101 26.4cm 10 3/8"
 CTN QTY 12



ORGANIC ROUND PLATE
SDESOG8 1 21cm 8 1/4"
SDESOG7 1 18.6cm 7 1/4"
 CTN QTY 12



ORGANIC ROUND BOWL
SDESOGB11 25.3cm 9 3/4"
 110cl 38oz
 CTN QTY 12



DEEP COUPE PLATE
SDESPD271 28.1cm 11" H: 3.7cm
 CTN QTY 12 ✦



DEEP COUPE PLATE
SDESPD251 25.5cm 10" H: 3.5cm
 CTN QTY 12 ✦



DEEP COUPE PLATE
SDESPD221 22.5cm 8 5/8" H: 2.7cm
 CTN QTY 12 ✦



WIDE RIM BOWL
SDESVWBL1 28cm 11"
 46.8cl
 16.5oz
 CTN QTY 12 ✦
SDESVWBM1 24cm 9 1/2"
 28.4cl 10oz
 CTN QTY 12 ✦



TRIANGLE PLATE
SDESTR121 31.1cm 12 1/4"
 CTN QTY 6 ✦
SDESTR101 26.5cm 10 1/2"
 CTN QTY 12



TRIANGLE PLATE
SDESTR9 1 22.9cm 9"
 CTN QTY 12 ✦
SDESTR7 1 19.2cm 7 3/4"
 CTN QTY 12



TRIANGLE BOWL
SDESTRB91 23.5cm 9 1/4"
 60cl 21oz
SDESTRB71 18.5cm 7 1/4"
 37cl 13oz
SDESTRB61 15.3cm 6"
 26cl 9oz
 CTN QTY 12



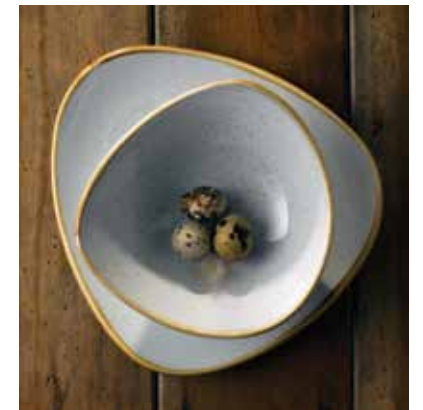
OBLONG PLATE
SDESOP141 35 x 18.5cm
 14" x 7 1/4"
 CTN QTY 6 ✦
SDESOP111 29.5 x 15cm
 11 3/4" x 6"
 CTN QTY 12



DEEP SQUARE PLATE
SDESDS101 26.8cm 10 1/2"
 CTN QTY 6



OVAL COUPE PLATE
SDESOP7 1 19.2cm 7 3/4"
 CTN QTY 12 ✦



Duck Egg Blue

Code: SDES



NOODLE BOWL
SDESNDL1 107.5cl 37.8oz
 H: 8cm
 Dia: 18.3cm
 CTN QTY 6



SOUP BOWL
SDESRBL61 47cl 16oz
 H: 6.3cm 5/8"
 Dia: 13.2cm 2 1/2"
 CTN QTY 12



ZEST BOWL
SDESZE121 34cl 12oz
 6.5cm 2 1/2"
 12.1cm 4 7/8"
 CTN QTY 12



CHIP MUG
SDESRPCM1 28cl 10oz
 H: 9.5cm 3 7/8"
 Dia: 8.3cm 3 1/4"
 CTN QTY 12



DIP POT
SDESYPD21 5.7cl 2oz
 H: 5.9cm 2 1/3"
 Dia: 5cm 2"
 CTN QTY 12



CAPPUCCINO CUP
SDESCB441 50cl 17.5oz
 H: 7cm
 Dia: 11.5cm
 CTN QTY 6
SDESCB401 46cl 16oz
 H: 7cm
 Dia: 11cm
 CTN QTY 6



CAPPUCCINO CUP
SDESCB281 34cl 12oz
 H: 6.5cm
 Dia: 11cm
 CTN QTY 12
SDESCB201 22.7cl 8oz
 H: 5.5cm
 Dia: 9.5cm
 CTN QTY 12



SAUCER
SDESSS1 15.6cm 6 1/4"
 CTN QTY 12
 (Fits SDESCB441,
 SDESCB401 SDESCB281 &
 SDESCB201)



ESPRESSO CUP
SDESCEB91 10cl 3.5oz
 H: 5.5cm
 Dia: 6.5cm
 CTN QTY 12



ESPRESSO SAUCER
SDESSS1 11.8cm 4 1/2"
 CTN QTY 12
 (Fits SDESCEB91)



MUG
SDESVM121 34cl 12oz
 H: 11cm
 Dia: 8cm
 CTN QTY 12



BEVERAGE POT
SDESSB151 42.6cl 15oz
 H: 10.5cm
 CTN QTY 4
 REPLACEMENT LID
SDESRL151
 CTN QTY 6



JUG
SDESSJ41 11.4cl 4oz
 H: 7cm
 CTN QTY 4



SUGAR BOWL
SDESSSGR1 22.7cl 8oz
 H: 6.2cm
 Dia: 9.8cm
 CTN QTY 12



SAUCE DISH
SDESSD31 9cl 3oz
 H: 4cm 1 1/2"
 Dia: 8cm 3"
 CTN QTY 12



SALT
SDESSSA1 7cm 2 1/2"
 CTN QTY 12
 PEPPER
SDESSPE1 7cm 2 1/2"
 CTN QTY 12



BUD VASE
SDESSBV1 12.5cm 5"
 CTN QTY 6



Peppercorn Grey

Code: SPGS



COUPE PLATE
SPGSEV121 32.4cm 12 3/4"
 CTN QTY 6 ✦
SPGSEV111 28.8cm 11 1/4"
 CTN QTY 12 ✦
SPGSEV101 26cm 10 1/4"
 CTN QTY 12 ✦



COUPE PLATE
SPGSEVP81 21.7cm 8 2/3"
 CTN QTY 12 ✦
SPGSEVP61 16.5cm 6 1/2"
 CTN QTY 12 ✦



LARGE COUPE BOWL
SPGSPLC21 31cm 12"
 240cl 84.5oz
 CTN QTY 6 ✦



COUPE BOWL
SPGSEVB91 24.8cm 9 3/4"
 113.6cl 40oz
 CTN QTY 12 ✦
SPGSEVB71 18.2cm 7 1/4"
 42.6cl 15oz
 CTN QTY 12 ✦



ORGANIC ROUND PLATE
SPGSOG111 28.6cm 11 1/4"
SPGSOG101 26.4cm 10 3/8"
SPGSOG8 1 21cm 8 1/4"
SPGSOG7 1 18.6cm 7 1/4"
 CTN QTY 12



ORGANIC ROUND BOWL
SPGSOGB11 25.3cm 9 7/8"
 CTN QTY 12



DEEP COUPE PLATE
SPGSPD271 28.1cm 11"
 H: 3.7cm
 CTN QTY 12 ✦
SPGSPD251 25.5cm 10"
 H: 3.5cm
 CTN QTY 12 ✦
SPGSPD221 22.5cm 8 5/6"
 H: 2.7cm
 CTN QTY 12 ✦



WIDE RIM BOWL
SPGSVWBL1 28cm 11"
 46.8cl 16.5oz
 CTN QTY 12 ✦
SPGSVWBM1 24cm 9 1/2"
 28.4cl 10oz
 CTN QTY 12 ✦



TRIANGLE PLATE
SPGSTR121 31.1cm 12 1/4"
 CTN QTY 6
SPGSTR101 26.5cm 10 1/2"
 CTN QTY 12
SPGSTR9 1 22.9cm 9"
 CTN QTY 12
SPGSTR7 1 19.2cm 7 3/4"
 CTN QTY 12



TRIANGLE BOWL
SPGSTRB91 23.5cm 9 1/4"
 60cl 21oz
SPGSTRB71 18.5cm 7 1/4"
 37cl 13oz
SPGSTRB61 15.3cm 6"
 26cl 9oz
 CTN QTY 12



OBLONG PLATE
SPGSOP141 35 x 18.5cm
 14" x 7 1/4"
 CTN QTY 6
SPGSOP111 29.5 x 15cm
 11 3/4" x 6"
 CTN QTY 12



NEW
PEPPERCORN GREY CHEFS' OBLONG PLATTER
 No. 9 **SPGSXP141** 35.5 x 24.5cm
 CTN QTY 6



NEW
PEPPERCORN GREY CHEFS' OBLONG PLATE
 No. 4 **SPGSXO141** 35.5 x 18.9cm
 CTN QTY 6
 No. 3 **SPGSXO111** 29.8 x 15.3cm
 CTN QTY 12
 No. 2 **SPGSXO101** 26.9 x 12.7cm
 CTN QTY 12
 No. 1 **SPGSXO7 1** 20 x 12.1cm
 CTN QTY 12



NEW
PEPPERCORN GREY CHEFS' OBLONG PLATE
 No. 8 **SPGSOBL41** 30 x 19.9cm
 CTN QTY 6
 No. 7 **SPGSOBL31** 26.1 x 20.2cm
 CTN QTY 12
 No. 6 **SPGSOBL21** 23.7 x 15.7cm
 CTN QTY 12
 No. 5 **SPGSOBL11** 15.4 x 12.6cm
 CTN QTY 12



DEEP SQUARE PLATE
SPGSDS101 26.8cm 10 1/2"
 CTN QTY 6



OVAL COUPE PLATE
SPGSOP7 1 19.2cm 7 3/4"
 CTN QTY 12 ✦



SOUP BOWL
SPGSRBL61 47cl 16oz
 H: 6.3cm 2 1/2"
 Dia: 13.2cm 5 1/8"
 CTN QTY 12



ZEST BOWL
SPGSZE121 34cl 12oz
 H: 6.5cm 2 1/2"
 Dia: 12.1cm 4 3/8"
 CTN QTY 12



RIPPLE CHIP MUG
SPGSRPCM1 28cl 10oz
 H: 9.5cm 3 3/8"
 Dia: 8.3cm 3 1/4"
 CTN QTY 12



RIPPLE DIP POT
SPGSRPD21 5.7cl 2oz
 H: 5.9cm 2 1/3"
 Dia: 5cm 2"
 CTN QTY 12



SAUCE DISH
SPGSSD3 1 9cl 3oz
 H: 4cm
 Dia: 8cm
 CTN QTY 12



CAPPUCCINO CUP
SPGSCB281 34cl 12oz
 H: 6.5cm Dia: 11cm
 CTN QTY 12 ✦
SPGSCB201 22.7cl 8oz
 H: 5.5cm Dia: 9.5cm
 CTN QTY 12 ✦



ESPRESSO CUP
SPGSCEB91 10cl 3.5oz
 H: 5.5cm
 Dia: 6.5cm
 CTN QTY 12 ✦



SAUCER
SPGSCSS 1 15.6cm 6 1/4"
 CTN QTY 12 ✦
 (Fits SPGSCB281 & SPGSCB201)
ESPRESSO SAUCER
SPGSESS 1 11.8cm 4 1/2"
 CTN QTY 12 ✦
 (Fits SPGSCEB91)



MUG
SPGSVM121 34cl 12oz
 H: 11cm Dia: 8cm
 CTN QTY 12 ✦



BEVERAGE POT
SPGSSB151 42.6cl 15oz
 H: 10.5cm
 CTN QTY 4
REPLACEMENT LID
SPGSRL151
 CTN QTY 6



JUG
SPGSSJ4 1 11.4cl 4oz
 H: 7cm
 CTN QTY 4



SUGAR BOWL
SPGSSSGR1 22.7cl 8oz
 H: 6.2cm
 Dia: 9.8cm
 CTN QTY 12 ✦



Nutmeg Cream

Code: SNMS



COUPE PLATE
SNMSEV121 32.4cm 12¾"
CTN QTY 6



COUPE PLATE
SNMSEV111 28.8cm 11¼"
CTN QTY 12
SNMSEV101 26cm 10¼"
CTN QTY 12



COUPE PLATE
SNMSEVP81 21.7cm 8 5/8"
CTN QTY 12



COUPE PLATE
SNMSEVP61 16.5cm 6½"
CTN QTY 12

NEW



COUPE BOWL
SNMSPLC21 31cm 12"
240cl 84.5oz
CTN QTY 6

NEW



COUPE BOWL
SNMSEVB91 24.8cm 9¾"
113.6cl 40oz
CTN QTY 12
SNMSEVB71 18.2cm 7¼"
42.6cl 15oz
CTN QTY 12



ORGANIC ROUND PLATE
SNMSOG111 28.6cm 11¼"
CTN QTY 12



ORGANIC ROUND PLATE
SNMSOG101 26.4cm 10½"
CTN QTY 12



ORGANIC ROUND PLATE
SNMSOG81 21cm 8¼"
CTN QTY 12



ORGANIC ROUND PLATE
SNMSOG71 18.6cm 7¼"
CTN QTY 12



ORGANIC ROUND BOWL
SNMSOGB11 25.3cm 9¾"
110cl 38oz
CTN QTY 12

NEW



TRIANGLE PLATE
SNMSTR121 31.1cm 12¼"
CTN QTY 6
SNMSTR101 26.5cm 10½"
CTN QTY 12



TRIANGLE PLATE
SNMSTR91 22.9cm 9"
CTN QTY 12



TRIANGLE PLATE
SNMSTR71 19.2cm 7¼"
CTN QTY 12



TRIANGLE BOWL
SNMSTRB91 23.5cm 9¼"
60cl 21oz
CTN QTY 12



TRIANGLE BOWL
SNMSTRB71 18.5cm 9¼"
37cl 13oz
CTN QTY 12
SNMSTRB61 15.3cm 6"
26cl 9oz
CTN QTY 12



DEEP SQUARE PLATE
SNMSDS101 26.8cm 10½"
CTN QTY 6



OBLONG PLATE
SNMSOP141 35 x 18.5cm
14" x 7¼"
CTN QTY 6



OBLONG PLATE
SNMSOP111 29.5 x 15cm
11¾" x 6"
CTN QTY 12



OVAL COUPE PLATE
SNMSOP71 19.2cm 7¾"
CTN QTY 12



Cornflower Blue

Code: SCFS



COUPE PLATE
SCFSEV121 32.4cm 12¾"
CTN QTY 6



COUPE PLATE
SCFSEV111 28.8cm 11¼"
CTN QTY 12
SCFSEV101 26cm 10¼"
CTN QTY 12



COUPE PLATE
SCFSEVP81 21.7cm 8⅔"
CTN QTY 12
SCFSEVP61 16.5cm 6½"
CTN QTY 12



LARGE COUPE BOWL
SCFSPLC21 31cm 12"
240cl 84.5oz
CTN QTY 6



COUPE BOWL
SCFSEVB91 24.8cm 9¾"
113.6cl 40oz
CTN QTY 12



COUPE BOWL
SCFSEVB71 18.2cm 7¼"
42.6cl 15oz
CTN QTY 12



WIDE RIM BOWL
SCFSVWBL1 28cm 11"
46.8cl 16.5oz
CTN QTY 12



WIDE RIM BOWL
SCFSVWBM1 24cm 9½"
28.4cl 10oz
CTN QTY 12



TRIANGLE PLATE
SCFSTR121 31.1cm 12¼"
CTN QTY 6
SCFSTR101 26.5cm 10½"
CTN QTY 12



TRIANGLE PLATE
SCFSTR91 22.9cm 9"
SCFSTR71 19.2cm 7¾"
CTN QTY 12



TRIANGLE BOWL
SCFSTRB91 23.5cm 9¼"
60cl 21oz
SCFSTRB71 18.5cm 7¼"
37cl 13oz
CTN QTY 12



TRIANGLE BOWL
SCFSTRB61 15.3cm 6"
26cl 9oz
CTN QTY 12



OBLONG PLATE
SCFSOP141 35 x 18.5cm
14" x 7¼"
CTN QTY 6



OBLONG PLATE
SCFSOP111 29.5 x 15cm
11¾" x 6"
CTN QTY 12



DEEP SQUARE PLATE
SCFSDS101 26.8cm 10½"
CTN QTY 6



OVAL COUPE PLATE
SCFSOP71 19.2cm 7¾"
CTN QTY 12



Spiced Orange

Code: SSOS



COUPE PLATE
SSOSEV121 32.4cm 12¾"
 CTN QTY 6
SSOSEV111 28.8cm 11¼"
 CTN QTY 12
SSOSEV101 26cm 10¼"
 CTN QTY 12



COUPE PLATE
SSOSEVP81 21.7cm 8⅔"
 CTN QTY 12
SSOSEVP61 16.5cm 6½"
 CTN QTY 12



LARGE COUPE BOWL
SSOSPLC21 31cm 12"
 240cl 84.5oz
 CTN QTY 6



COUPE BOWL
SSOSEVB91 24.8cm 9¾"
 113.6cl 40oz
 CTN QTY 12
SSOSEVB71 18.2cm 7¼"
 42.6cl 15oz
 CTN QTY 12



WIDE RIM BOWL
SSOSVWBL1 28cm 11"
 46.8cl 16.5oz
 CTN QTY 12
SSOSVWBM1 24cm 9½"
 28.4cl 10oz
 CTN QTY 12



TRIANGLE PLATE
SSOSTR121 31.1cm 12¼"
 CTN QTY 6
SSOSTR101 26.5cm 10½"
 CTN QTY 12
SSOSTR9 1 22.9cm 9"
 CTN QTY 12
SSOSTR7 1 19.2cm 7¾"
 CTN QTY 12



TRIANGLE BOWL
SSOSTRB91 23.5cm 9¼"
 60cl 21oz
 CTN QTY 12
SSOSTRB71 18.5cm 7¼"
 37cl 13oz
 CTN QTY 12



TRIANGLE BOWL
SSOSTRB61 15.3cm 6"
 26cl 9oz
 CTN QTY 12



OBLONG PLATE
SSOSOP141 35 x 18.5cm
 14" x 7¼"
 CTN QTY 6
SSOSOP111 29.5 x 15cm
 11¾" x 6"
 CTN QTY 12



DEEP SQUARE PLATE
SSOSDS101 26.8cm 10½"
 CTN QTY 6



OVAL COUPE PLATE
SSOSOP7 1 19.2cm 7¾"
 CTN QTY 12



SOUP BOWL
SSOSRBL61 47cl 16oz
 H: 6.3cm 2½"
 Dia: 13.2cm 5¼"
 CTN QTY 12



ZEST BOWL
SSOSZE121 34cl 12oz
 H: 6.5cm 2½"
 Dia: 12.1cm 4¾"
 CTN QTY 12



RIPPLE CHIP MUG
SSOSRPCM1 28cl 10oz
 H: 9.5cm 3¾"
 Dia: 8.3cm 3¼"
 CTN QTY 12



RIPPLE DIP POT
SWHSRPD21 5.7cl 2oz
 H: 5.9cm 2⅓"
 Dia: 5cm 2"
 CTN QTY 12



CAPPUCCINO CUP
SSOSCB281 34cl 12oz
 H: 6.5cm Dia: 11cm
 CTN QTY 12
SSOSCB201 22.7cl 8oz
 H: 5.5cm Dia: 9.5cm
 CTN QTY 12



SAUCER
SSOSCSS 1 15.6cm 6¼"
 CTN QTY 12
 (Fits SSOSCB281 & SSOSCB201)



ESPRESSO CUP
SSOSCEB91 10cl 3.5oz
 H: 5.5cm
 Dia: 6.5cm
 CTN QTY 12



ESPRESSO SAUCER
SSOESS 1 11.8cm 4½"
 CTN QTY 12
 (Fits SSOSCEB91)



MUG
SSOSVM121 34cl 12oz
 H: 11cm
 Dia: 8cm
 CTN QTY 12



BEVERAGE POT
SSOSSB151 42.6cl 15oz
 H: 10.5cm
 CTN QTY 4
REPLACEMENT LID
SSOSRL151
 CTN QTY 6



JUG
SSOSSJ4 1 11.4cl 4oz
 H: 7cm
 CTN QTY 4



SUGAR BOWL
SSOSSGR1 22.7cl 8oz
 H: 6.2cm
 Dia: 9.8cm
 CTN QTY 12



SAUCE DISH
SSOSSD3 1 9cl 3oz
 H: 4cm
 Dia: 8cm
 CTN QTY 12



Mustard Seed Yellow

Code: SMSS



COUPE PLATE
SMSSEV121 32.4cm 12¾"
 CTN QTY 6 ✦
SMSSEV111 28.8cm 11¼"
 CTN QTY 12 ✦



COUPE PLATE
SMSSEV101 26cm 10¼"
 CTN QTY 12 ✦



COUPE PLATE
SMSSEVP81 21.7cm 8²⁄₃"
 CTN QTY 12 ✦



COUPE PLATE
SMSSEVP61 16.5cm 6½"
 CTN QTY 12 ✦

NEW



COUPE BOWL
SMSPLC21 31cm 12"
 240cl 84.5oz
 CTN QTY 6 ✦

NEW



COUPE BOWL
SMSSEVB91 24.8cm 9¾"
 113.6cl 40oz
 CTN QTY 12 ✦
SMSSEVB71 18.2cm 7¼"
 42.6cl 15oz
 CTN QTY 12 ✦



WIDE RIM BOWL
SMSSVWBL1 28cm 11"
 46.8cl 16.5oz
 CTN QTY 12 ✦
SMSSVWBM1 24cm 9½"
 28.4cl 10oz
 CTN QTY 12 ✦



TRIANGLE PLATE
SMSSTR121 31.1cm 12¼"
 CTN QTY 6



TRIANGLE PLATE
SMSSTR101 26.5cm 10½"
 CTN QTY 12



TRIANGLE PLATE
SMSSTR9 1 22.9cm 9"
 CTN QTY 12



TRIANGLE PLATE
SMSSTR7 1 19.2cm 7¾"
 CTN QTY 12



TRIANGLE BOWL
SMSSTRB91 23.5cm 9¼"
 60cl 21oz
 CTN QTY 12



TRIANGLE BOWL
SMSSTRB71 18.5cm 7¼"
 37cl 13oz
 CTN QTY 12



TRIANGLE BOWL
SMSSTRB61 15.3cm 6"
 26cl 9oz
 CTN QTY 12

NEW



OBLONG PLATE
SMSSOP141 35 x 18.5cm
 14" x 7¼"
 CTN QTY 6



OBLONG PLATE
SMSSOP111 29.5 x 15cm
 11¾" x 6"
 CTN QTY 12



DEEP SQUARE PLATE
SMSSDS101 26.8cm 10½"
 CTN QTY 6



OVAL COUPE PLATE
SMSSOP7 1 19.2cm 7¾"
 CTN QTY 12 ✦



Berry Red

Code: SBRS



COUPE PLATE
SBRSEV121 32.4cm 12¾"
 CTN QTY 6 +
SBRSEV111 28.8cm 11¼"
 CTN QTY 12 +



COUPE PLATE
SBRSEV101 26cm 10¼"
 CTN QTY 12 +



COUPE PLATE
SBRSEVP81 21.7cm 8²/₃"
 CTN QTY 12 +



COUPE PLATE
SBRSEVP61 16.5cm 6½"
 CTN QTY 12 +

NEW



COUPE BOWL
SBRSPLC21 31cm 12"
 240cl 84.5oz
 CTN QTY 6 +

NEW



COUPE BOWL
SBRSEVB91 24.8cm 9¾"
 113.6cl 40oz
 CTN QTY 12 +
SBRSEVB71 18.2cm 7¼"
 42.6cl 15oz
 CTN QTY 12 +



WIDE RIM BOWL
SBRVWBL1 28cm 11"
 46.8cl 16.5oz
 CTN QTY 12 +
SBRVWBM1 24cm 9½"
 28.4cl 10oz
 CTN QTY 12 +

NEW



TRIANGLE PLATE
SBRSTR121 31.1cm 12¼"
 CTN QTY 6
SBRSTR101 26.5cm 10½"
 CTN QTY 12



TRIANGLE PLATE
SBRSTR9 1 22.9cm 9"
 CTN QTY 12



TRIANGLE PLATE
SBRSTR7 1 19.2cm 7¾"
 CTN QTY 12



TRIANGLE BOWL
SBRSTRB91 23.5cm 9¼"
 60cl 21oz
 CTN QTY 12

NEW



TRIANGLE BOWL
SBRSTRB71 18.5cm 9¼"
 37cl 13oz
 CTN QTY 12
SBRSTRB61 15.3cm 6"
 26cl 9oz
 CTN QTY 12



OBLONG PLATE
SBR SOP141 35 x 18.5cm
 14" x 7¼"
 CTN QTY 6



OBLONG PLATE
SBR SOP111 29.5 x 15cm
 11¾" x 6"
 CTN QTY 12



DEEP SQUARE PLATE
SBRSDS101 26.8cm 10½"
 CTN QTY 6



OVAL COUPE PLATE
SBR SOP7 1 19.2cm 7¾"
 CTN QTY 12 +





FEATURES & BENEFITS

Super Vitrified Body

Super Vitrified is a vitreous body that does not absorb moisture, is more hygienic and has better heat retention properties. Its high resistance to thermal shock helps to reduce breakages. Its properties provide superior strength.

Superior Glaze Finish

Protected by ecoglaze, a high performance glaze that enhances product performance, prolonging the life of the product, improving stain and metal mark resistance and durability. Excellent stability prevents thermal shock and crazing.

Underglaze Decoration

The design is hand decorated under glaze, this creates a protective layer to add lasting durability and improve performance during service use.

Hand Decorated

Stonecast items are decorated individually by hand, creating unique pieces that add to the overall rustic charm.

Fully Glazed Base on all Flatware

Prevents damage when stacking.

5 Year Edge Chip Warranty

Covered by our 5 Year Edge Chip Warranty.
✦ Denotes items covered by the warranty

Bespoke Stonecast Backstamp

Dishwasher & Microwave Safe





CHURCHILL[®]

churchill1795.com

[@churchill1795](https://twitter.com/churchill1795)

[f churchill1795](https://www.facebook.com/churchill1795)

[@churchill_1795](https://www.instagram.com/churchill_1795)

Tel: +44 (0) 1782 577 566

Fax: +44 (0) 1782 524 355

email: info@churchill1795.com

HEAD OFFICE & STOKE SHOWROOM

No. 1 Marlborough Way
Tunstall
Stoke-on-Trent
ST6 5NZ

LONDON SHOWROOM

Business Design Centre
Suite 102
52 Upper Street
Islington
London
N1 0QH

MADRID SHOWROOM

Calle Princesa No 2
7ta Planta
Puertas 4 y 5
Madrid 28008
España
Tel: 910 004 929



Visit our YouTube channel
Churchill1795 to watch our
official Stonecast video.

In the printing of this brochure, every effort has been made to ensure perfect reproduction of product colours, but due to printing limitations, they may not be an exact match to the actual product.



HLITSCV6