

PREPARE FOR YOUR HOLIDAY FEASTS

The 750-TH/III Cook & Hold oven utilizes Halo Heat® technology to gently and evenly cook your food and ensure the highest quality product. Consistent low temperature cooking activates the natural enzymes present in even the toughest cuts of meat and tenderizes as it cooks and holds. Whether you specialize in prime rib, corned beef sandwiches or barbecued ribs, Alto-Shaam's original Cook & Hold oven will provide you with highest quality product every time.



HALO HEAT® COOK & HOLD OVEN

120V electric, low temperature, 100 lb. capacity - (10) full size pans, simple controls with on/off power, stainless steel side racks, (3) stainless steel wire shelves, (1) exterior drip tray with removable pan, 3-1/2" casters; 2 rigid, 2 swivel with brakes, EcoSmart®, cULus, NSF, CE, IP X3, TUV NORD

#11024300

\$4,188.50 ea.

To order, call your TriMark United East salesperson or phone: **1.800.755.5580**

Pricing valid now through December 31, 2015.

TriMark

Foodservice Equipment, Supplies and Design

UNITED EAST



ORION® CHAFERS

High mirror finish, HD 18/8 stainless steel, complete with stand, cover holder, water pan, food pan, dome cover & fuel holder, imported

#11007274 Round, 4 qt.	\$102.84 ea.
#11000334 Round, 6 qt.	\$202.02 ea.
#11007273 Oval, 6 qt.	\$211.58 ea.
#11000333 Rectangle, Full Size, 9 qt.	\$477.13 ea.



CANDLE FUEL CELLS

#04063010 8 Hour, clear (180/cs)	\$89.07/cs.
#04063020 10 Hour, clear (144/cs)	\$74.07/cs.
#04063050 24 Hour, clear (72/cs)	\$75.66/cs.
#11060362 36 Hour, clear (36/cs)	\$33.03/cs.



WICK CHAFING FUEL & ACCESSORIES

#04622034 2 Hr Ethanol (48/cs)	\$91.68/cs.
#04622200 4 Hr Glycol (24/cs)	\$45.85/cs.
#04622210 6 Hr Glycol (24/cs)	\$51.03/cs.
#04080120 Full Size Chrome Wire Rack Chafer Frame	\$6.79/ea.



ONEIDA

NEW RIM

18/10 stainless steel. Packed 1 dozen per box.

#03530020 Oyster Cocktail Fork	\$25.60/bx.
#03530010 European Dinner Fork	\$40.50/bx.
#03530040 Dinner Knife	\$33.65/bx.
#03530070 Dessert Spoon	\$30.42/bx.
#03530000 Teaspoon	\$22.06/bx.
#03530050 Demitasse Spoon	\$29.09/bx.



BOSQUE COLLECTION

Ask your Sales Rep about the Bosque Collection from Homer Laughlin.

MAXIMILLIAN STEEL™ CHAFERS

18-8 stainless, durable, easy to clean, patented contemporary styling, mirror finish, Imported

#11049004 Soup Chafer, 4.2 qt.	\$124.88 ea.
#11082979 Round, 6 qt.	\$151.02 ea.
#11018386 Soup Chafer, 7.4 qt.	\$131.05 ea.
#11003397 Rectangular, 9 qt.	\$184.00 ea.
#10996942 Universal Electric Chafer Heater	\$197.92 ea.



BUTANE STOVE

15,000 BTU, High heat; w/Windguard
#11066211 \$69.69 ea.



TRIMARK BUTANE FUEL

#11060364 8 oz. Can \$22.72/cs.



BARCLAY™

18/0 stainless steel

#1106 Salad Fork (2/dz)	\$8.09/bx.
#1105 Dinner Fork (2/dz)	\$8.09/bx.
#1145 Dinner Knife (1/dz)	\$8.61/bx.
#11066661 Bouillon Spoon (2/dz)	\$8.06/bx.
#1101 Teaspoon (3/dz)	\$16.79/bx.



LOUVRE SERVING COLLECTION

18/8 Stainless Steel

#04050154 Soup Ladle, 4 oz., 11-3/4"	\$29.71 ea.
#04050170 Serving Spoon, 9-1/2", slotted	\$15.53 ea.
#11012639 Serving Spoon, 10-1/2"	\$6.49 ea.
#04050190 Pastry Server, 7"	\$15.44 ea.
#04050154 Soup Ladle, 4 oz., 11-3/4"	\$29.71 ea.
#11021896 Carving Knife, 11"	\$25.43 ea.
#04050157 Meat Fork, 10-1/2"	\$7.18 ea.
#04050595 Serving Spoon, 13-1/8"	\$19.68 ea.
#04050162 Serving Spoon, 13-1/8"	\$19.70 ea.
#04050165 Sauce Ladle, 3/4 oz., 6"	\$15.05 ea.
#04050155 Serving Spoon, 9-1/2"	\$15.89 ea.



FREEDOM

18/0

#03950000 Teaspoon (3/dz)	\$17.50/bx.
#03950100 Bouillon Spoon (3/dz)	\$25.52/bx.
#03950300 Dinner Fork, 3 tine (3/dz)	\$25.56/bx.
#03950350 Dinner Fork, 4 tine (3/dz)	\$29.99/bx.
#03950500 Dinner Knife, 1 pc. (1/dz)	\$14.58/bx.



BAGUETTE II, WORLD® COLLECTION

Stainless Steel; packed 3 dozen per box

#11008826 Teaspoon, 18/8	\$49.96/bx.
#11008827 Dessert Spoon 18/8	\$66.22/bx.
#11008887 Bouillon Spoon, 18/8	\$55.63/bx.
#11008942 European Dinner Fork, 18/8	\$100.48/bx.
#10997331 Dinner Knife, solid handle 18/0	\$95.16/bx.



BASICS COLLECTION™

Medium rim, porcelain, bright white

#10998348 6-1/4" Plate (3/dz)	\$58.62/cs.
#10998584 7" Plate (3/dz)	\$93.27/cs.
#11013767 9" Plate (2/dz)	\$81.89/cs.
#11005737 10-5/8" Plate (1/dz)	\$82.77/cs.
#10999922 Plate, 12-1/2", round, Medium rim (1/dz)	\$125.94/cs.
#11013777 10 oz. Grapefruit Bowl (3/dz)	\$84.66/cs.
#11001694 12-1/2" x 8-1/4", Platter (1/dz)	\$200.84/cs.
#11041591 14" x 6", Long Tray (1/dz)	\$222.98/cs.
#10999919 11-3/4", Pasta Bowl (1/dz)	\$139.23/cs.
#10999918 12 oz., 9-1/4" dia., Round Rimmed Soup Bowl, 2/dz	\$184.79/cs.
#11039263 10 oz., Mug, Medium rim (3/dz)	\$123.26/cs.



AU GRATIN

#11071338 7 oz., White (2/dz) \$196.61/cs.
#11005186 10 oz., White (2/dz) \$198.87/cs.

SOUFFLE CUP

#11007911 6 oz., Fluted, White (2/dz) \$169.74/cs.
#01054035 8 oz., Oval White (2/dz) \$186.85/cs.

VARICK CAFE PORCELAIN

#11021845 Round Bowl, 10 oz., 9" (1/dz)
#6900E519 Platter, 13-1/4" x 9" (1/dz)
#6900E521 Platter, 10" x 6-3/4" (1/dz)
#11017231 Plate, 12", square (1/dz)
#11018152 Plate, 10", square (1/dz)
#11048807 Presentation Bowl, 17 oz., 11-1/2" (1/dz)
#11070178 Plate, 15" x 7" (1/dz)
#11070180 Plate, 11" x 17", rectangle (1/dz)
#6900E412 Square Tray, 5" x 5" x 5/8" (2/dz)
#11050060 Round Plate, 10-5/8" (1/dz)
#11019020 Plate, 6-1/2" dia., round (1/dz)



\$64.67/cs.
\$172.81/cs.
\$102.72/cs.
\$300.31/cs.
\$174.02/cs.
\$219.35/cs.
\$176.45/cs.
\$99.58/cs.
\$99.09/cs.
\$96.09/cs.
\$39.88/cs.

steelite
INTERNATIONAL



KANSAS CITY STEAK KNIFE

Delrin™ handle. 1 dozen per box
#11075899 \$16.20/bx.



BLACK HANDLE STEAK KNIFE

4-5/8" stainless steel blade, round tip,
polypropylene handle. 2 dozen per box
#790527 \$16.50/bx.



PARISIAN STEAK KNIFE

4-7/16" long blade. 1 dozen per box
#11019745 \$84.25/bx.



BAKELITE HANDLE STEAK KNIFE

8-7/8" long blade. 1 dozen per box
#04151004 \$19.43/bx



CHOP HOUSE STEAK KNIFE

9-3/4" long blade. black bakelite handle. 1 dozen
per box
#04151001 \$25.42/bx



SHANGHAI STEAK KNIFE

9" long blade. pom handle. black. 1 dozen per box
#10997404 \$66.43/bx



PLATING SPOONS

Deep well bowl with mirror finish, dual micro-
serration for better grip and control, satin finish
handle, 18/8 stainless steel
#M35141 7-7/8" long, slotted \$6.79 ea.
#11080633 1 oz., 8-1/2" long \$8.15 ea.
#11082451 8 piece plating tool set \$61.00 ea.



CAKE STAND & COVER

12" diameter
#11038491 Cover, 6"h Round \$23.37 ea.
#11073602 Stand, 7"h, s/s \$24.39 ea.



CLEAR TURN & SERVE DISPLAY TRAY

#11028872 Clear Tray 15"x3-1/2" \$40.01 ea.
#315-15-12 Inside Tray, 15"x1" \$30.28 ea.
#11062526 Dome Cover, 15"x7" \$86.39 ea.



ART DE CUISINE® CHINA

Chip resistant, microwave & dishwasher safe, glaze finish, porcelain, white

#11008908 Soup Cup, 10 oz. (6/cs) \$38.18/cs.
#11037851 Pasta Bowl, 9-1/2" (6/cs) \$95.55/cs.
#11008901 Pasta Bowl, 12" (6/cs) \$132.72/cs.
#11008897 Plate, 6-3/4" (6/cs) \$30.54/cs.
#11029207 Plate, 7-7/8", medium, square (6/cs) \$57.93/cs.
#ZCAPSQPI1 Plate, 10-1/4" (6/cs) \$88.51/cs.
#11008902 Dessert Plate, 11" dia (6/cs) \$78.23/cs.
#ZCAPSQL1 Square Plate, 11-3/4" (6/cs) \$123.94/cs.
#11008900 Dinner Plate, 12" (6/cs) \$112.23/cs.
#11042760 Large Plate, 14" x 7-1/2" (6/cs) \$191.20/cs.
#11008906 Coffee Mug, 12 oz. (6/cs) \$47.68/cs.



TABLE SKIRT

#100 shirred pleat, with snap clips attachment, flame
retardant, machine washable/dryable, 100% polyester,
Wyndham - Ask your salesperson about quantity
pricing.

#WYN1V21629 21.5', White, w/B Velcro
#WYN1V1329WT 13' x 29", White
#WYN1V1329BK 13' x 29", Black
#WYN1V1329BRG 13' x 29", Burgundy



CONTOUR™ TABLE COVER

Snug fit, reinforced rubber cup attached to leg,
flame retardant, machine washable/dryable,
polyester/spandex blend

#11053731 Fits 8' x 30" \$170.34 ea.
#11053729 Fits 6' x 30" \$147.07 ea.



SKIRTING CLIPS

#AV Velcro A-Clip for 3/8"-1/2" Edge, 100/bag \$68.82/bg.
#04638071 B-Clip, 100 pack (1/bg) \$61.94/bg.
#04638070 B-Clips 100 pack (1/bg) \$41.78/bg.



CAMBRO

DOME DISPLAY COVER

12"x20"x7" w/one end cut out
#10997309 \$43.70 ea.



AMBIENT DISPLAY CASE

12"x16x12-1/2"
#11053480 \$256.07 ea.

To order, call your TriMark United East salesperson or phone:

1 800 755 5580

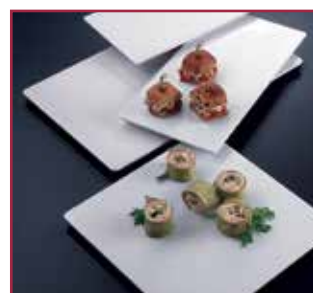


ENDURANCE™ CURVED PLATTERS

#11006548 16"x16" Square
#11008738 17" Triangle



\$27.66 ea.
\$23.27 ea.



ENDURANCE™ FLAT PLATTERS

21-1/2"L x 13"W Rectangular, white
#11041496

\$33.59 ea.

ENDURANCE™ SLANTED BOWLS

Dishwasher safe up to 200 degrees

#11013711 5", 11 oz. \$4.13 ea.
#10997578 11", 112 oz. \$17.90 ea.
#11009928 8", 40 oz. \$8.95 ea.



ENDURANCE™ FAUX SLATE

#11035664 Platter, 21-1/2"L x 13"W \$48.20 ea.
#11035666 Square, 14-1/2"L \$39.23 ea.
#11035665 Platter, 18"L x 8-1/2"W \$26.15 ea.
#11037781 Platter, 14-3/4"L x 8-1/4"W \$18.58 ea.



ENDURANCE™ RECTANGLE PLATTERS

#10997571 14.25"x7.5" \$12.80 ea.
#10997573 18"x8.25" \$15.28 ea.
#10996389 21"x13" \$20.66 ea.



ENDURANCE™ SQUARE PLATTERS

11039398 12" x 1-3/8" \$14.45 ea.
11039425 16" x 2" \$33.72 ea.

ENDURANCE™ SERVING BOWLS

#11073605 Round Bowl, 40 oz. \$16.12 ea.
#11006883 Round Bowl, 270.51 oz. \$27.53 ea.



BAMBOO DISPLAY RISER SET

Set of 3, rounds 6"H, 9"H, 11"H. Reversible for use as a bowl/basket.

#11050215 \$89.94/set



ENDURANCE™ SQUARE BOWLS

#11004216 7"x7", 58 oz. \$8.40 ea.
#11074304 19-5/8"x8"x3" \$31.94 ea.
#11050872 17-5/8"x11-7/8"x 2-2/3" \$31.24 ea.
#11074306 13-3/4"x9-7/8"x2-3/4" \$22.86 ea.
#11009125 12"x12", 228 oz. \$18.72 ea.
#10997574 9-1/2" \$12.66 ea.



TIERED DISPLAY SERVER STAND

3-tier, 20"x13-3/4"x12"
#11006977 \$44.25 ea.



GREENOVATIONS

50% melamine/50% bamboo, biodegradable, packed 6 per case

#11072140 Round Bowl, 18 oz. \$36.19/cs.
#11072143 Square Bowl, 20 oz. \$62.58/cs.
#ECO652-RT Rectangle Bowl, 20 oz. \$62.58/cs.
#ECO66R-PB Round Plate, 6" \$25.78/cs.
#ECO72-RT Round Bowl, 36 oz. \$55.99/cs.
#ECO862-RT Rectangle Bowl, 38 oz. \$73.81/cs.
#11072145 Round Plate, 9" (6/cs) \$53.65/cs.



DISPLAY RISERS

Stainless Steel, Set of three, 6", 4", 8"
#11027517 \$86.37/set

SICILIANO® SERVINGWARE

Break-resistant, dishwasher safe, BPA free, melamine, white, NSF

#11029202 Square Plate, 6"x6"

#11011810 Square Plate, 16"x16"

#CS-6112-W Platter, 13-1/4"x9-1/2", coupe, oval,

#OP-116-W Platter, 12-1/2"x8-1/4", rectangular, round corners

11028858 Mama Mia™ Bowl, 1.3 qt. 8-1/2" dia. x 2-1/4" deep

#ML-241-W Bowl, 26.6 qt., 24" dia. x 6" deep

11008923 Bowl, 11.4 qt., 18" dia. x 4-1/4" deep

11050211 Display Plate/Platter, 18" dia. x 1-1/2" deep

11035071 Platter, 4 qt., 27"x10"x2" deep, oval

\$61.94/cs.

\$25.70 ea.

\$230.03/cs.

\$168.78/cs.

\$100.74/cs.

\$77.96/cs.

\$44.42 ea.

\$98.85/cs.

\$91.64/cs.



STAINLESS STEEL RISERS

5"x2h", 6"x4h", 7"x6h" & 8"x8h" Set of Four

#11017849

\$109.69/set



BAMBOO MENU MESSAGE HOLDER

#11071665 1-1/4"x11/8"x3/4"

\$3.28 ea.

TABLE NUMBER CARDS

Mini Chalk Card, includes chalk marker (pack of 20)

#11027825 Table Numbers Cards

\$12.84/pack

WHITE CHALK MARKERS

#11014082 Small tip 4/pack

\$14.07 ea.



BAMBOO RISER SET

Set of 3, dark bamboo risers. 5"x5"x2-1/2"H, 7"x7"x4-3/4"H and 9"x9"x6-1/8"H

#11022420

\$63.53/set

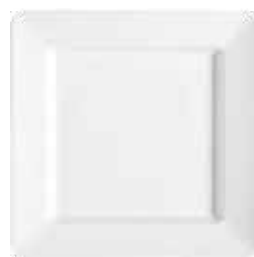


MENU MESSAGE HOLDER

Magnetic Card/Sign holder, 4"x1-1/4"x2-1/2", rectangular, acrylic

#11011331

\$7.11 ea.



MILANO™ SERVINGWARE

12" Square, break-resistant, dishwasher safe, melamine, NSF

#11005626

\$14.25 ea.



ALLIGATOR STYLE CLIP

Menu Card Holder, square base, aluminum

#11005185

\$2.86 ea.



ALLIGATOR NUMBER CLIP

Flexible Double-Ended Alligator Clips

#11022913

\$3.08 ea.



CAL-MIL

EASEL DISPLAY CARD HOLDER

8-1/2" x 11", Clear Plastic

#11003182

\$8.93 ea.



CAL-MIL

BAMBOO U-FRAME

#11089347 3-1/2"W x 2"H card base \$15.46 ea.

#11087034 9" x 12" U-Frame

\$26.88ea.



SAN MICHELE BOWL

1.9 qt., White

#11014247

\$19.28 ea.



HARP NUMBER CLIP

1-1/2" S/S

#04285002

\$1.20 ea.



WHIRLY BASKET

12"x6", s/s wire

#FR12

\$24.26 ea.



CAL-MIL

U-FRAME METAL CARD HOLDER

8-1/2"x11", Black base

#11064041

\$26.88 ea.



CAL-MIL

SILVER FRAME MENU HOLDERS

8.5"W x 11"H

#10996581

\$48.62 ea.

To order, call your TriMark United East salesperson or phone:

1 800 755 5580

UNITED EAST



ELEGANT BEVERAGE DISPENSER

2.5 gallon capacity. Single non-insulated, dispenser. Stainless steel center hold ice for chilling. BPA free

#11021522 \$135.63 ea.



CLASSIC DISPENSER

3 gallon capacity w/interior ice chamber. Sturdy wrought iron base.

#11012812 \$190.16 ea.



CAMWEAR® CAMLITER® BEVERAGE DECANTER

Available in 3 sizes. Polycarbonate, clear, chip & break resistant, spill-proof lid. 9-3/4" tall

#10998403 1/4 liter \$3.22 ea.

#10997758 1/2 liter \$5.35 ea.

#11004449 1 liter \$7.25 ea.



PITCHER

1/2 gallon capacity. Polycarbonate design. Center ice core tube and cover.

#11034557 \$28.60 ea.



DRINK BAR MIX POURER SET

Quart, assorted color-coded caps, 2 of each (brown, green, red, orange, white & yellow)

#11037127 \$5.47 ea.

CONDIMENT CADDY

6 Compartment, Black base

#11036593 \$23.23 ea.



BEVERAGE DISPENSER

Includes: lid, removable infuser tube, spigot, flavor indicator stickers: "Now Serving", "Iced Tea", "Water" & "Lemonade", dishwasher safe, clear plastic body, stainless steel lid & base, BPA free

#11050415 3 gal. \$81.75 ea.

#11049006 5 gal. \$127.26 ea.



ACRYLIC BEVERAGE DISPENSER

Square, with removable ice chamber

#11048354 1-1/2 gal. \$357.99 ea.

#11018656 3 gal. \$385.49 ea.



DRIP TRAYS

4" diameter in octagon or square shape, black

#10996522 Octagon \$7.66 ea.

#11001043 Square \$7.66 ea.



STAINLESS STEEL PITCHER

64 oz., brushed finish

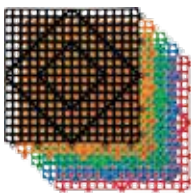
#11003590 \$26.99 ea.



PLASTIC STACKING PITCHER

2 litre capacity. Includes coordinating, clear lid.

#11029416 \$13.95 ea.



VERSA MATS®

Interlocking Shelf Mats

12"x12", Black, 12 per case

#09721580 \$129.78/cs.



WAITER'S CORKSCREW OPENER

Black

#04030070 \$6.77 ea.



VINA™

Tall, elegant & affordable. Packed 1 dozen/case

#10996741 8 oz., Flute \$52.49/cs.

#11001652 Vina Trumpet, 6-1/2 oz. \$52.49/cs.

#02701911 8 oz., Martini \$52.49/cs.

#10996730 10 oz., Martini \$52.49/cs.

#11049718 12 oz., Wine \$52.49/cs.

#02701902 12 oz., Tall Wine \$52.49/cs.

#10996299 12-1/2 oz., Diamond \$52.49/cs.

#02701903 13-1/2 oz., Balloon \$52.49/cs.

#02701910 16 oz., Tall Wine \$52.49/cs.

#11019924 16 oz. Wine Glass, Finedge® rim \$52.49/cs.

#02701904 18-1/2 oz., Wine \$52.49/cs.

#02701905 18-1/4 oz., Balloon \$52.49/cs.

#02701913 16 oz., Goblet \$52.49/cs.



WINE CHILLERS

7-3/4"x4-3/4", shiny finish stainless steel or brushed finish

#WC1 Polished \$24.36 ea.

#11056413 Brushed \$25.08 ea.



MARBLE WINE COOLER

7", keeps proper temperature for up to 2 hours, black

#MWC59BLACK \$26.09 ea.



CLEAR PLASTIC PITCHERS

64 oz., covered

#04340225 \$12.63 ea.



ORIGINAL & SHORTY™ SAF-T-ICE® TOTE

6 Gallon, Carrying capacity: 25 lbs

#04249010 \$47.24 ea.



SAF-T-SCOOP® & GUARDIAN SYSTEM™

64 - 86 oz. capacity, includes: 1 Saf-T-Scoop®, 1 Guardian™ holder with removable drainage cap, 1 mounting bracket, 2 wire hanging brackets, 2 suction cups

#04480085 \$76.14 ea.

#04480065 8 oz. scoop w/holder \$32.02 ea.



Libbey

DURATUFF®, OPTIVA

Stackable, heavy sham, packed 1 dozen per case

#11073199	16 oz. Cooler Glass	\$52.18/cs.
#11066663	12 oz. Beverage Glass	\$40.77/cs.
#11080461	10 oz. Rocks Glass	\$34.59/cs.



ONEIDA

SOHO COLLECTION

packed 2 dozen per case

#02500155	8-1/2 oz. Old Fashion	\$71.15/cs.
#11034071	11 oz. Double Old Fashion	\$102.96/cs.
#02020350	11-1/2 oz. Soho Collins	\$71.15/cs.



ONEIDA

CLARISSE™

Outstanding durability, great value, high style barware, tempered rim

#77787	7 oz., Old Fashioned / Rocks Glass (3dz/cs)	\$78.89/cs.
#11025941	8 oz., Rocks Glass (3dz/cs)	\$79.84/cs.
#11020327	9 oz., Hi Ball/Beverage Glass (3dz/cs)	\$82.89/cs.
#11005687	10 oz., Rocks Glass (3dz/cs)	\$84.89/cs.
#11025194	10 oz., Rocks Glass, Stackable (2dz/cs)	\$56.54/cs.
#11025192	12 oz., Dbl Old Fashion, Stackable (2dz/cs)	\$65.53/cs.
#77792R	12 oz., Beverage Glass (3dz/cs)	\$93.00/cs.
#11028184	14 oz., Tumbler Glass (3dz/cs)	\$100.06/cs.
#90254	14 oz., Beverage, Stackable (2dz/cs)	\$66.70/cs.
#90255	16 oz., Ice Tea Cooler Glass (2dz/cs)	\$84.94/cs.
#77796	16 oz., Ice Tea Glass (3dz/cs)	\$127.39/cs.
#90263	20 oz., Cooler (2dz/cs)	\$88.95/cs.
#77780	20 oz., Ice Tea Cooler Glass (2dz/cs)	\$93.66/cs.



PORTABLE COFFEE BREWER

Pour-over capability, single, temperature-controlled, brews directly into decanters, 1.2 gallon tank capacity, 3 warmers (2 top and 1 bottom), stainless steel construction, 120v/60/1-ph, 15 amps, 1700 watts, NEMA 5-15P, NSF

#CPO-3P-15A

\$345.26* ea.



CRATHCO® CLASSIC BUBBLERS™ PREMIX COLD BEVERAGE DISPENSER

17-1/2" W, (2) 5 gal. capacity clear polycarbonate bowl, 8-1/4" cup height, MCX Mag Drive™ impeller, stainless steel base side panels & drip tray, 120v, 660 watts, 6 amps, UL, NSF, cULus

#06088155

\$1,138.60 ea.



CAMBRO

CAMTAINER BEVERAGE DISPENSER

5 gallon capacity. Keep your beverages piping hot or nicely chilled for many hours. Container features 4 latches for easy filling. Drip-proof recessed faucet for easy self-serve access. Stackable.

#11005139 Black

\$147.02 ea.



BLACK PLASTIC BEVERAGE DISPENSER

3 gallon capacity. For cold beverage service. Rectangular shape with infusion tube and ice tube. Includes drip tray. NSF

#CBDP3BLK

\$43.19 ea.



Libbey



EMBASSY® STEMWARE

Safedge® Rim and foot guarantee

#02700950	7 oz., Rocks Glass Footed (2dz/cs)	\$87.67/cs.
#02700890	10-1/2 oz., Goblets 5-1/4"h (2dz/cs)	\$87.67/cs.
#02700960	10-1/2 oz., Goblets 5-3/4"h (2dz/cs)	\$87.67/cs.
#02700955	10-1/2 oz., Goblet Heat Tempered (2dz/cs)	\$95.15/cs.
#02700885	11-1/2 oz., Goblets (2dz/cs)	\$87.67/cs.
#02701055	6 oz., Champagne Flute (1dz/cs)	\$43.83/cs.
#10996633	3 oz., Mini Martini Glass (1dz/cs)	\$43.38/cs.
#02701023	9-1/4 oz., Martini Glass (1dz/cs)	\$43.83/cs.
#02700970	8-1/2 oz., Wine, round bowl (2dz/cs)	\$87.67/cs.
#02700975	8-1/2 oz., Wine, pear shape (2dz/cs)	\$87.67/cs.



#DC110

#DCI 118

COFFEE MUGS

Ultra White, Ceramic

#DCI 118 Royal Coffee Mug, 12 oz. (1/cs) \$83.90/cs.

#DC110 San Antonio, 10 oz. (2/dz) \$168.55/cs.



CHINA TEAPOT

Lidless, 16 oz. Ultra White, Packed 1 dozen per case.

#11029388

\$152.69/cs.



OMEGA BEVERAGE SERVER

Insulated, black ergonomic push button cover, satin body, stainless steel

11053903 20 oz. \$32.80 ea.

11053904 34 oz. \$36.29 ea.

11053905 52 oz. \$39.09 ea.

11053906 68 oz. \$41.87 ea.

Spring USA



DELTA BEVERAGE SERVER

Self-opening cover, stainless steel liner with brushed stainless steel exterior & chrome accents

11014457 52 oz. \$76.78 ea.

Spring USA



SIGMA BEVERAGE SERVER

Brushed stainless steel exterior. Square, vacuum insulated, Easy-ID push button release lid, stainless steel liner

11053907 14 oz. \$61.42 ea.

11039160 34 oz. \$71.19 ea.

Spring USA

To order, call your TriMark United East salesperson or phone:

1 800 755 5580

UNITED EAST



SPARTA® SPECTRUM® CUTTING BOARDS

High density polyethylene. Each measures 18"x24"x1/2". Set of 6 colors, includes cross contamination chart. NSF
#04154041 \$217.81/set



PROFESSIONAL CUTTING BOARDS

Hard Rock maple with Boos Block Cream Finish with Beeswax, edge grain, reversible
#AUJUS2015 15"x20"x1-1/2" \$72.73 ea.
#AUJUS 18"x24"x1-1/2" \$94.22 ea.



EGG SLICER

Two-way Lever
#11001065 \$23.51 ea.

MICROPLANE GRATERS

#11061284 Super Grater \$12.60 ea.
#444002 Fine Grater \$15.11 ea.



SPIRAL VEGETABLE SLICER

Manual, table top, Measures 11-7/8" x 5-3/8" x 8-1/4". Includes 3 sets of blades: 1" (3mm) spacing, 1" (6mm) spacing and a straight blade for ribbon cuts.
#11041643 \$36.93 ea.



MANDOLIN

Countertop unit with rubber feet. Measures 12-3/4" x 5" x 5-1/2". Includes 5 stainless steel blades. Top rack dishwasher safe. Thickness can be adjusted from 0 to 5/16" (0mm to 7mm)
#A4982171 \$36.92 ea.



BUS CARTS & ACCESSORIES

Black; durable plastic construction, sturdy casters; Available in 2 sizes; NSF
#11017440 36-1/4"x18"x38" \$166.10 ea.
#11006401 42" x 23" \$256.46 ea.



NEMCO

EASY FLOWERING ONION™ CUTTER

Sturdy, all-metal construction, NSF
#11027215 \$471.71 ea.



EASY WEDGER™

Wedges many fruits and vegetables, 8-section, stay-sharp stainless steel blades, stainless steel, NSF
#11013501 \$148.78 ea.



ELECTRIC SHARPENER

3-Stage, 3 Diamond heads
#11021604 \$270.48 ea.



DOUBLE DIAMOND MANUAL KNIFE SHARPENER

100% diamond abrasives, two stages: sharpening and honing, textured handle for secure hold, Made in USA
#11049927 \$48.90 ea.



SAF-T-KNIFE™ STATION

Holds up to 8 knives. Measures 15"x15"x4-1/4". 3-piece break-resistant plastic construction. Easy to assemble, mount and disassemble for cleaning. Dishwasher safe. NSF
#11039801 \$32.67 ea.

CAMBRO

UTILITY CART

16"x32"x38". Speckled Grey. 3 shelves; double push handles and durable casters.
#11022053 \$130.98 ea.



LOBBY PRO™ UPRIGHT

Dust Pan Broom measures 37-1/2" tall. Black handle. Lobby dust pan features durable rear wheels to improve wear resistance. Plastic will not stain, discolour or absorb odors.
#09470000 Broom \$24.45 ea.
#09470185 Lobby Dust Pan \$8.29 ea.



CHEF'S KNIFE

10", S/S Blade, Sofgrip White Handle
#04140110 \$38.74 ea.



PARING KNIVES

3-1/4" blade
#10997058 \$2.35 ea.



ROAST BEEF SLICER

12" Granton Edge w/SofGrip Handle
#11061023 \$30.86 ea.



SANDWICH KNIFE

8" blade; Offset
#11029436 \$13.65 ea.



TURNERS

6-1/2"x3", S/S, Slotted Fish Turner
#11011283 \$19.12 ea.



PIE SERVER

4-1/2" surface
#04129128 \$10.05 ea.



MAGNETIC KNIFE HOLDER

#11029157 13" \$9.24 ea.
#11005059 18" \$11.65 ea.



SLIM JIM® WASTE CONTAINERS & ACCESSORIES

#11071762 16 gal., Light Gray \$39.02 ea.
#09920350 15 gal., Beige \$39.02 ea.
#11003898 23 gal., Black \$50.39 ea.
#09920152 23 gal., Gray \$50.39 ea.
#09920355 23 gal., Dark Blue w/Recycle Logo \$64.09 ea.
#09920185 Black Slim Jim Trolley \$91.39 ea.
#11028492 Black Swing-Lid for Slim Jim \$35.47 ea.

TAYLOR

ROUND DIGITAL SCALE

Digital, dry: 11 lb. x 1/8 oz., 5 kg x 1 g, liquid: 175 oz. x 1/8 oz., 5000 ml x 1 ml, 0.6" LCD readout, add & weigh tare, (2) AAA batteries (included), stainless steel platform on black base, NSF
#11081053 \$32.63 ea.



DIGITAL PORTION SCALE

Stainless steel platform. 3/4" LCD readout. Tare and auto off features. Low battery and overload indicators. Operates on AC adapter (included) or 1-9 volt battery (not included). NSF listed.
#11050461 11 lb.x.1 oz \$71.18 ea.
#11050460 2 lb.x1 oz \$70.00 ea.



OPTION™ SALAD DRESSING DISPENSERS

48oz., clear polycarbonate body, ergonomic handle, with polypropylene blank name tag, BPA-free. Black Triton® top. NSF.
#N48 \$17.45 ea.



SYRUP POURER

Dripout, 6 oz. glass with chrome top
#11052879 \$74.20/dz.



NYLON SERVING UTENSILS

With stainless steel handle
#H2902 Solid Spoon, 13-1/2" \$2.96 ea.
#H2903 Slotted Spoon, 13-1/2" \$2.96 ea.
#H2904 Solid Spatula, 13" \$2.96 ea.
#H2905 Slotted Spatula, 13" \$2.96 ea.



KENKUT III FOIL DISPENSER

For use with film or foil from 12-18". Suction cup feet prevent slipping and pulling out of place.
#08615017 \$55.26 ea.



RAPI-KOOL® PLUS COLD PADDLES

Helps to rapidly chill food through the temperature danger zone (135°F (57°C) to 70°F (21°C) in 2 hours, then to 41°F (5°C) within 4 hours.

#04417015 64 oz (1892ml) \$32.28 ea.
#04417005 128 oz (3785ml) \$42.78 ea.



HEAT RESISTANT COOKING TOOLS

Resistant up to 450°. NSF.

#11040820 Fish Turner, 12-1/2" \$6.93 ea.
#12969-10 Ladle, 8-1/2 oz., 10-5/8" \$13.40 ea.
#12986-01 Serving Spoon, 9" \$8.78 ea.



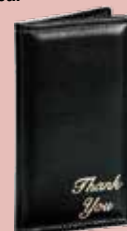
MENU COVERS

8-1/2"x14", booklet, clear vinyl, heat sealed. Packed 2 dozen per case.
#81 8-1/2X14 Quad pocket, 8 view \$76.05/cs.
#61 8-1/2X14 Triple pocket, 6 view \$84.77/cs.



RESERVATION BOOK

3-ring spine, holds (185) 8-1/2"x11" reservation sheets (included). Features a padded cover.
#11071937 \$52.56 ea.



GUEST CHECK HOLDER

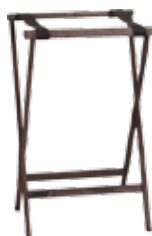
Padded and stitched cover, black vinyl
#08451095 \$12.38 ea.



GRIPITITE™ TRAYS

Heavy duty fibreglass construction eliminates warping or breakage. Rubber liner is permanently bonded to try. Prevents slipping. Stain and odor resistant. Dishwasher safe.

#11075894 11" Round, Black \$12.11 ea.
#11006252 14" Round, Black \$13.66 ea.
#11006265 14" Round, Tan \$13.66 ea.
#11006259 16" Round, Black \$15.30 ea.
#11006266 16" Round, Tan \$15.30 ea.



FOLDING TRAY STAND

Constructed of kiln-dried hardwood with walnut finish. Features durable, lightweight construction, reinforced joints. 30" tall.

#04700034 \$50.99 ea.



PLASTIC BOOSTER SEATS

#11058232 Black \$29.11 ea.
#100BC131 Dark Brown \$29.11 ea.
#04005170 Dk. Brown - Reversible \$40.19 ea.



CAMCARRIER® FOOD PAN CARRIER

Front loading, for 12" x 20" food pans, 16-1/2"W x 24"D x 23-5/16"H, approximately capacity 36 quarts, fits Camdolly® CD300, CD300H, CD300HB, holds full size 12 x 20, 1/2 or 1/3 size pans, polyethylene with foam insulation, latches & gaskets, coffee beige, NSF.

#04088130 Dark brown

\$288.17 ea.

EXOGLASS® BOUILLON STRAINER

7-7/8" diameter; one-piece composite handle; ergonomic handle with pan hooks; wire reinforcement; heat resistant up to 430°F; stainless steel mesh; dishwasher safe.

#11011349

\$100.72 ea.



CAMCARRIER® HEATED ULTRA PANCARRIER®

Front loading, one-piece poly shell, foam insulated. Holds (6) 2-1/2" deep food pans. Features molded-in handles, nylon latch, vent cap and is stackable. 110V, 2.0 amps, 230W. NSF. Energy Star®
#11011720 Black \$858.34 ea.



AFFORDABLE PORTABLE™ DELUXE HOT FOOD STATION

Four well, 60"W x 39-1/2"D x 35"H, with buffet style breath guard, enclosed base, individual manual dial controls for each 480 watts thermoset sealed well (no spillage pans required), manifold drain, black vinyl-clad 20 gauge carbon steel base, (4) 4" swivel casters (2) braked, 120v/60/1-ph, 16 amps, 8 ft cord with NEMA 5-20P, cULus, NSF.

#T38710

Ask you salesperson for pricing.



To order, call your TriMark United East salesperson or phone:

1 800 755 5580



SILICONE OVEN MITTS

Protects up to 685° degrees

#11055705 15" \$22.92 ea.

#11068766 17" \$25.84 ea.



HEAVY DUTY RANGE

Gas, 36", (6) cast-iron burners, standing pilot, full width removable crumb/drip trays, piezo type push button ignition, (1) 26" oven, stainless steel front, ledge, sides, back guard and shelf, 215,000 BTU

#R-R6 \$2,713.00* ea.



ULTIMATE RESTAURANT RANGES

36" gas range, (6) non-clog burners. Standard grates; Standing pilot; Standard oven with battery spark ignition and (1) rack; 22-1/2" flue riser with shelf; Stainless steel front; Sides; Shelf and 6" adjustable legs. CSA. NSF.

#4361C 198,000 BTU \$2,909.00* ea.

#4361D 243,000 BTU \$2,779.00* ea.



SUPER ERECTA® QWIKSLOT™ SHELF

Wire, 60"x24", Bright (zinc) finish, adjustable & removable, snaps into posts (4) shelf clips are packed with shelf, each unit requires a standard

Super Erecta® Shelf at the top & bottom

#2460QBR

\$93.35 ea.



SUPER ERECTA® QWIKSLOT™ SECURITY UNIT

Mobile, chrome-plated finish, 65"x27-1/4"x68-1/2", no intermediate shelves (2) 5MP/5MPB casters

#SEC56ECQ \$1,289.00* ea.



MOBILE HEATED CABINET

Insulated, bottom-mount heater assembly, recessed push/pull handles, magnetic latch, (11) sets chrome plated wire, 4-1/2" centers, adjustable 1-1/2" centers, red dutch doors, anti-microbial latches, analog thermometer, (4) 5" swivel casters (2) braked, stainless steel construction, 1500watt, CSA

#H-135-SUA-11-R

\$2,803.00* ea.



MOBILE PAN RACK

Full height, open sides, (20) 18"x26" pan capacity, angle slides on 3" centers, welded tubular aluminum frame, end loading, 69" high, 5" polyurethane swivel stem casters, NSF. Shipped Knocked-Down

#11017719

\$265.94 ea.



C5™ T-SERIES TRANSPORT ARMOUR™

Heavy-duty insulated mobile heated cabinet, full height, adjustable bottom load slides-3.35" oc, top mount solid state digital controls with mobile power (16) 18"x26" or (32) 12"x20"x2-1/2" pan capacity, 304 stainless steel, foamed-in-place polyurethane insulation, maximum temperature 200°F, 6" casters, 120V/60/1, 1400 watts, 12 amps, NEMA 5-15P, UL, CUL, NSF, Energy Star®

#C5T9-DSB

\$7,004.00* ea.



POP-UP TOASTER

Four 1-1/4" wide self centering slots, individual progressive color controls, removable crumb tray, stainless steel construction.

#11006930

\$249.71 ea.



FOOD CARRIER DOLLY

17-1/2"x8-5/8"x23-7/8", platform design, four 5" casters, two swivel (#C450), two swivel with brake (#C455) (Food carriers not included)

#99144

\$217.00 ea.



ADJUSTUBE® II DISPENSER HEATED DISH DISPENSER

Heated Dish, cabinet style, enclosed base, mobile design, (2) self-elevating dish dispensing tubes, maximum dish size 11-7/8" diameter, stainless steel construction, 1000 watt

#HML2-12A

\$3,536.00* ea.



METRO BOW-TIE™ DUNNAGE RACK

Slotted with separate polymer tie for joining racks, Microban® antimicrobial product protection, rust & corrosion proof polymer construction, NSF

#10999387 22" x 30" x 12"H, holds up to 1,500 lbs.

#11004752 22" x 36" x 12"H, holds up to 1,500 lbs.

#10999049 22" x 48" x 12"H, slotted, holds up to 3,000 lb.

#HP2260PDMB 22" x 60" x 12"H, slotted, holds up to 3,000 lbs.

\$213.48 ea.

\$177.51 ea.

\$240.17 ea.

\$275.00 ea.



LOWERATOR® DISPENSER

Dish, cabinet style, enclosed base, mobile design, (2) self-elevating dish dispensing tubes, maximum dish size 10-1/8" diameter, stainless steel construction

#ML2-10

\$1,967.00* ea.



DORMONT SAFETY-SET

Equipment placement system for all caster-mounted equipment, allows precise, consistent equipment placement under the fire suppression and ventilation systems, satisfies NFPA codes 17A (5.6.4) and 96 (12.1.2.3), Includes two (2) units and both adhesive foam tape and hardware pack as optional installation methods

#11037332

\$48.76 ea.



DORMONT BLUE HOSE™ MOVEABLE GAS CONNECTOR KIT

1/4" inside dia., 36" long, covered with stainless steel braid, coated with blue antimicrobial PVC, 1 SnapFast® QD, 1 full port valve (2) 90° elbows, coiled restraining cable with hardware, 180,000 BTU/hr minimum flow capacity, limited lifetime warranty

#04419040

\$414.61 ea.



PRE-RINSE FAUCET ASSEMBLY

EasyInstall Pre-Rinse Unit, wall mount, base faucet, spring check cartridges & lever handles, 45"H, 14" overhang, 19-3/8" clearance, 24" riser, spray valve, flex stainless steel hose
#04192340 \$355.65 ea.



PRE-RINSE SPRAY VALVE ASSEMBLY

Pre-Rinse Spray, squeeze valve with quick connect socket auto shut off valve. 36" flexible stainless steel hose, 1/2" IPS male inlet, 48" overall length of unit
#B-1410 \$255.79 ea.

PRE-RINSE LOW FLOW SPRAY VALVE

Low flow spray face. 0.65 GPM flow control. EPA 2005 compliant.
#04940727 \$83.03 ea.



CONTINUOUS FEED VEGETABLE PREP FOOD PROCESSOR

Kidney-shaped opening, vegetable prep attachment with external ejection, "S" blade, 27577 5/64" (2mm) grating disc & 27566 5/32" (4mm) slicing disc, continuous feed, bowl attachment designed for vertical cutting & mixing, on/off & pulse switch, single speed, 1725 RPM, 120v/60/1-ph, 7 amps, 1 HP, ETL electrical & sanitation, cETL
#04198000 3 qt. clear ABS bowl with handle \$1,022.03 ea.
#11009882 3 qt. Stainless Steel bowl with handle \$1,586.49 ea.



SLIDE CHECK RAILS

Attractive, sleek design enhances front-of-house and open-kitchens. Tough anodized aluminum construction with durable glass marbles. Available in multiple lengths. Includes mounting screw pack
#11000843 24" \$18.23 ea.
#10999233 36" \$23.62 ea.
#10999231 48" \$30.84 ea.



TRIFORM VINYL DISPOSABLE GLOVES

Lightly powdered or powder-free. For left or right hand use. Meets FFDA standards. 4-mil vinyl construction. No seams to split or leak. Available in small, medium, large and x-large. 100 gloves/box.

TRIFORM FOIL WRAP

Heat & cold resistant. Moisture proof. Odor proof. Available in 2 weights. Each roll measures 18"x500'.

#11027896 - standard weight .00065 gauge \$20.60/roll
#11027895 - heavy duty .00085 gauge \$28.75/roll



TRIFORM PLASTIC CLINGWRAP

Keeps food fresh from freezer to prep. Creates a super seal with extra hold. Available .32 gauge or .35 gauge. Each gauge is available in 2 roll sizes.

#11044101 - .32 gauge, 12"x2000' \$10.68/roll
#11044102 - .32 gauge 18"x2000' \$15.69/roll
#08615001 - .35 gauge 12"x2000' \$11.66/roll
#08615002 - .35 gauge 18"x2000' \$17.26/roll



GUEST CHECKS

1 part; Green lined
#11030916 13 Lines (2.5M/cs) \$48.15/cs.
#11030919 15 Lines (2.5M/cs) \$26.23/cs.



REGISTER ROLL PAPER

#11020343 Single Ply, 3" x 150' (50/cs) \$22.69/cs.
#11020341 NCR, 2-Ply, 3" x 100' (50/cs) \$46.30/cs.
#11020344 Thermal, Single Ply 3-1/8"x230' (50/cs) \$53.81/cs.
#11029185 Thermal, Single Ply 2-1/4"x80' (50/cs) \$19.05/cs.
#11029184 Thermal, Single Ply 2-1/4"x200' (50/cs) \$35.48/cs.
#08659001 Yellow, Single Ply 3"x165' (50/cs) \$30.61/cs.
#08659000 Green, Single Ply 3"x190' (50/cs) \$49.43/cs.



TRIFORM FOIL STEAM TABLE PANS

#11024523 1/2 Size Steam Table 2-1/2" Deep (100/cs) \$35.87/cs.
#11024529 Full Size Steam Table 3-3/8" Deep (50/cs) \$48.68/cs.
#11047224 Full Size Steam Table Pan, 1-5/8" Deep (50/cs) \$57.79/cs.



STEAM TABLE PAN LINERS

#08129010 fits 1/2 size, 4"-6" deep pan (100/cs) \$39.26/cs.
#08129040 fits 1/3-1/4 size, 4"-6" deep pan (100/cs) \$33.00/cs.
#08129045 fits 1/6 size, 2-1/2"-6" deep pan (100/cs) \$34.40/cs.
#08129020 fits full size, 2-1/4"-4" deep pan (100/cs) \$67.14/cs.



EXOPAT NON-STICK BAKING MATS

Reusable baking mat. Heat resistant from -40°F to 580°F. Provides up to 3000 uses.
#04015375 13"x18" \$23.13 ea.
#04015350 18"x26" \$36.18 ea.



PASTRY BAGS

Standard, rubberized exterior, disposable, recyclable. 100 bags per roll.
#165019 18" length \$17.30/roll
#165018 21-5/8" length \$19.78/roll



EXOGLASS® PASTRY CUTTER SET

Round, one-piece composite material, non-deformable, comfort grip, dishwasher safe, made in France, NF certification. Plain set includes 8 sizes: 1-1/8", 1-1/2", 2", 2-3/8", 2-3/4", 3-1/8", 3-1/2" and 4". Fluted set includes these sizes plus a 3/4" sized cutter.
04015150 Plain (8 piece set) \$63.78/set
11021168 Fluted (9 piece set) \$90.65/set



Foodservice Equipment, Supplies and Design

UNITED EAST



ASSORTED BUS BOXES

An efficient and durable solution for clearing tables. Made of high density polyethylene. Divided tote boxes ideal for separating dirty dinnerware and flatware. Classic design sports reinforced handles for easy transporting. Available in 3 styles; red tote packed 12 per case.

#04655050 22x15x7 Divided, Brown	\$12.84 ea.
#04655051 22x15x7 Divided, Black	\$12.15 ea.
#04655190 22x15x7 Brown	\$10.92 ea.
#04655195 22x15x7 Grey	\$10.92 ea.
#11015983 21.25x15.75x5 Economy Red	\$6.57 ea.



BAMBOO ALLERGEN MARKERS

Made of renewable, eco-conscious bamboo. Measures 3-1/2" tall. Promotes allergy awareness and prevents cross contamination. Paddle design makes them more sturdy than ordinary knot-style picks. Sold in packs of 100.

#11050014 - Gluten Free	\$3.11/pk.
#11050270 - Allergy	\$3.11/pk.



TEAK TRAY STANDS

Teak wood with a mahogany finish. Rubber slip proof top rings prevent tray accidents. Straps can be replaced when needed. Available in two heights.

#04700100 32" Tall	\$50.06 ea.
#04700060 38" Tall	\$54.82 ea.



CONTINUOUS FEED FOOD PROCESSOR

LiquiLock™ sealed, clear-view 4-quart batch bowl – process soups, sauces, marinades, and more without leaks. Features extra large continuous feed chute/funnel and food pusher. High-performance 2 Peak HP motor. Includes sealed serrated S-blade, whipping disc, slicing disc, shredding disc and dicing assembly. Easy ON and PULSE/OFF controls. Processes 4 quarts of dry ingredients and 2-3/4 quarts of wet.

#11057828	\$991.36 ea.
-----------	--------------



LARGE ITALIAN-STYLE PANINI GRILL

Ribbed cast-iron plates for even heat distribution and quick cooking time. 14.5" x 11" cooking surface. Brushed stainless steel body construction and removable drip tray. Hinged, auto-balancing top plate to suit foods up to 3" thick. Adjustable thermostat to 570°F. Adjustable back feet for easy grease drainage. Power ON and Ready indicator lights. Heat-resistant handles.

#04646002	\$568.71 ea.
-----------	--------------



COMBINATION 3-1/2 QUART BATCH BOWL & CONTINUOUS FEED FOOD PROCESSOR

LiquiLock™ sealed, clear-view 3.5-quart batch bowl – process soups, sauces, marinades, and more without leaks. Continuous-feed chute for large-volume processing. High-performance 1 HP motor. Easy ON and PULSE/OFF controls. Stainless steel drive shaft. Has extra large feed chute/funnel and food pusher. Processes 3-1/2 quarts of dry ingredients and 1-3/4 quarts of wet

#11040015	\$610.43 ea.
-----------	--------------

New Libbey Master's Reserve™ Renaissance Glassware



Fine stemware that reinvents the vessel of classic elegance with modern aesthetics. Like a quintessential landmark hotel restored for the contemporary guest, re-imagined details are the architects of a glass that culminates in pure refinement and seamless function. Renaissance is redefined, graciously accommodating and elevated beyond the stoic offerings of well-known tradition.

One elegant pattern; an array of stemware options; infinite beverage experiences.

In Stock

All Styles Are Packed 1 Dozen/Case

#11089580	16oz. Wine Glass, 9" tall	\$63.99 ea.
#11089581	20oz. Wine Glass, 9-3/8" tall	\$63.99 ea.
#11089584	16oz. Goblet, 7-1/2" tall	\$63.99 ea.
#11089587	7oz. Martini Glass, 7" tall	\$63.99 ea.
#11089586	8oz. Flute, 9-3/8" tall	\$63.99 ea.

Additional styles are available. Ask your salesperson for a complete list of Renaissance glassware options.

Are You Ready for New Year's Eve?



MULTI-COLOR PARTY KIT for 50

Pack Includes:

25 Foil Hats, 25 Foil Horns, 25 Glitter Tiaras, 25 Hawaiian Leis, 25 Party Clickers and 95 Throws of Serpentes

#08999012	\$51.54 ea.
-----------	-------------



SILVER HOLOGRAPHIC PARTY KIT for 20

Pack Includes:

10 Foil Top Hats, 10 Feathered Tiaras, 10-10" Party Horns, 10 Noisemakers and 20 Poly Leis

#11027373	\$43.23 ea.
-----------	-------------

FOUNDRY™

FROM HALL CHINA

PULLED FROM THE EARTH
AND FORGED IN FIRE,
FOUNDRY WILL INSPIRE.



Foundry™ brings a bold rugged character to any table. Molded to impress, the complete line distributes heat evenly and can withstand the toughest tests of time and temperature. It's quality glaze delivers a distinct personality.

See your salesperson for a complete listing of pieces available.

Allow 2-4 weeks delivery on special order items. Broken carton charges may apply and will be added to the sell price of some special order items. Not responsible for typographical errors. Prices and specifications are subject to change. Where seen (*) and unless otherwise noted, freight from the manufacturer is to be added to the purchase of all equipment and furniture orders. Delivery and set-in-place is additional.