

Project	Quantity	Item #
Model Specified:		CSI Section 11400

Compact Undercounter with Drawers Refrigerator Models/Self-Contained

27", 32", 60" & 72" Wide Models



Model UHT60-DD
(shown with optional casters)



Stainless Exterior,
Anodized Aluminum
Interior

- 27" Two Drawer Refrigerator
- 32" Two Drawer Refrigerator
- 60" Four Drawer Refrigerator
- 72" Four Drawer Refrigerator

- UHT27-D
- UHT32-D
- UHT60-DD
- UHT72-DD

Traulsen's durable, high performance, compact undercounter refrigerator models provide a high quality/high value alternative to the all too common commodity types in today's market.

Durable, built with stainless steel exteriors and anodized aluminum interiors, their heavy duty cabinet construction promises years of useful service. Truly front breathing, their design allows for "zero-clearance" installation. As a result they can be placed right up against the back wall and alongside other kitchen equipment, saving valuable floor space.

Additionally, they offer a wide range of optional accessories to choose from, and are ideal for use with many different type applications.

Standard Product Features

- Stainless Steel Exterior Top, Sides & Drawers
- Front Breathing Self-Contained Refrigeration System
- Environmentally Friendly R-134a Refrigerant
- Automatic Non-Electric Condensate Evaporator
- Full-Length Drawer Handle with Gasket Guard
- Magnetic Snap-In Drawer Gaskets
- Self-Closing Drawers with Stay Open Feature
- 16-Gauge Stainless Steel Drawer with Slide
- 8' Cord & Plug Attached
- Set of Four (4) 6" High Adjustable Legs
(6 for 60" & 72" models)
- Three Year Parts And Labor Warranty
- Five Year Compressor Warranty

Optional Accessory Kits*

- **CASTER 5SET4** (four 6" high casters for 27" & 32" models)
- **CASTER 5SET6** (six 6" high casters for 60" & 72" models)
- **CASTER SET4IN** (four 4" high casters for 27" & 32" models)
- **CASTER 60SET3** (six 4" high casters for 60" & 72" models)
- **CASTER SET3IN** (four 3-1/2" high casters for 27" & 32" models)
- **CASTER SET4** (six 3-1/2" high casters for 60" & 72" models)
- **CASTER SET2IN** (four 2-1/2" high casters for 27" models)

*Optional accessory kits shipped separately for field installation.

Factory Installed Options

- Stainless Steel Finished Back
- **CU27TOP BSWO** (22 ga. stainless steel top with 4" backsplash for models UHT27)
- **CU32TOP BSWO** (22 ga. stainless steel top with 4" backsplash for models UHT32)
- **CU60TOP BSWO** (22 ga. stainless steel top with 4" backsplash for models UHT60)
- **CU72TOP BSWO** (22 ga. stainless steel top with 4" backsplash for models UHT72)
- Other Door Hingings



Listed by Underwriters Laboratories Inc.,
to U.S. and Canadian safety standards
and NSF International in accordance
with ANSI/NSF7.

Approval: _____



TRAULSEN
4401 BLUE MOUND RD.
PHONE 1 (800) 825-8220
Website: www.traulsen.com

FT. WORTH, TX 76106
FAX-MKTG. 1 (817) 624-4302

Project	Quantity	Item #
Model Specified:		CSI Section 11400

Specifications

Construction, Hardware and Insulation

Cabinet exterior front, one piece sides, and drawer faces are constructed of 22 gauge stainless steel.

The cabinet is insulated with an average of 2" thick high density, non-CFC, foamed in place polyurethane.

Refrigeration System

A balanced, rear mounted, front breathing, self-contained refrigeration system using R-134a refrigerant is provided. It features a capillary tube metering device, air-cooled hermetic compressor, a forced air evaporator coil and a non-electric condensate evaporator. An 8' cord and plug is provided. Standard operating temperature for refrigerator models is 34 to 38°F.

Drawers

They are constructed using 16 gauge stainless steel drawer slides and 1 5/16" diameter stainless steel rollers. Drawers include both a self-closing and stay-open feature.

Warranties

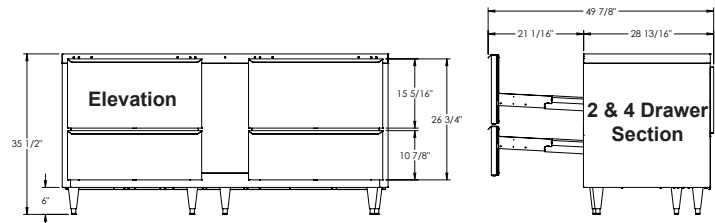
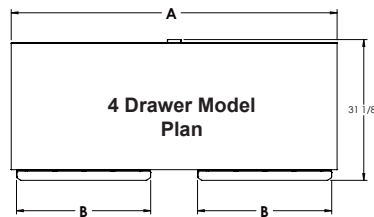
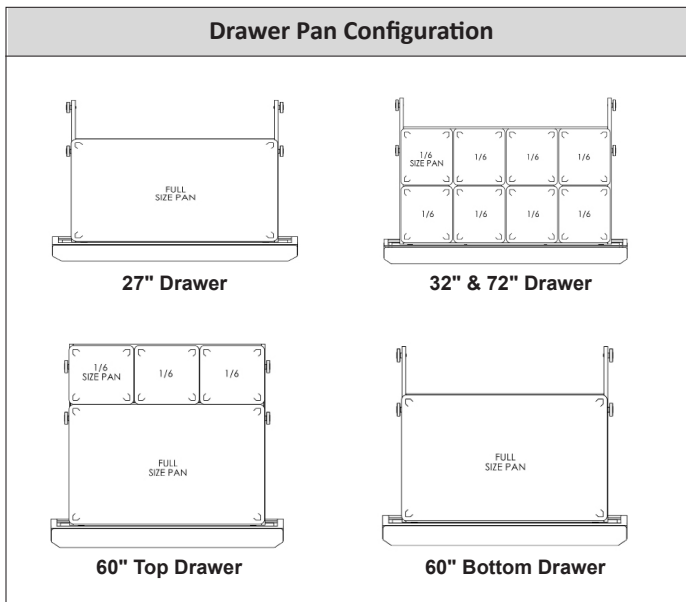
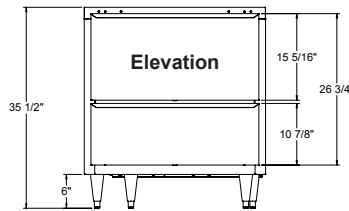
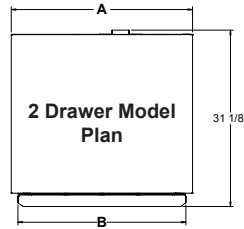
Both a three year parts and labor warranty and a five year compressor warranty (self-contained models only) are provided standard.

Cabinet Dimensional Data					
				A	B
Model	# Of 1/6 size pan per drawer	# Of drawers per cabinet	# of 1/6 pans per cabinet	Width - cabinet	Width - drawer
UHT27-D	6	2	12	27"	24 5/8"
UHT32-D	8	2	16	32"	29 5/8"
UHT60-DD	9 top & 6 bottom	4	30	60"	24 5/8"
UHT72-DD	8	4	32	72"	29 5/8"

Electrical & Refrigeration Data			Shipping Data		
115/60/1 R-134a NEMA 5-15P			(42"D x 41"H)		
Model	Full Load Amps	BTU/HR - HP	Width - crated	Volume - crated cu. ft.	Weight - lbs.
UHT27-D	4.7	1520 (1/5)	45"	45	250 net/275 gross
UHT32-D	6.2	1520 (1/5)	45"	45	265 net/300 gross
UHT60-DD	6.3	1520 (1/5)	69"	69	467 net/500 gross
UHT72-DD	6.3	1520 (1/5)	84"	84	560 net/600 gross

NOTES:

- Based on a 90 degree F ambient and 20 degree F evaporator.
- When ordering please specify: voltage, Hinging, Optional Accessories and any additional warranties.
- Continued product development may necessitate specification changes without notice.



Part No. TR35933 (revised 12/12)

TRAUlsen
4401 BLUE MOUND RD.
PHONE 1 (800) 825-8220
Website: www.traulsen.com

FT. WORTH, TX 76106
FAX-MKTG. 1 (817) 624-4302

