



## FAST-TRAK® WALK-INS



Standard Coolers, Freezers and Combination Cooler/Freezers In Stock for 5 DAY SHIPMENT

### STANDARD FEATURES

- Unlimited lengths in 1' increments
- Available in widths of 6', 7', 8', 9', 10', 11' & 12'
- Heights 7'7" and 8'7" with floor, 7'4" and 8'4" floorless for single compartment and combinations
- Heights 7'7" and 8'7" combination with floor freezers and less floor coolers with 4-3/8" foam sealers
- Indoor or outdoor models
- Pre-Assembled Remote Refrigeration Systems
- Temperatures: 38°F, 35°F, -10°F
- Full 4" thick panels foamed-in-place with HFC-134a polyurethane insulation which is CFC and HCFC free
- 26 gauge corrosion resistant stucco embossed coated steel on all surfaces except interior floor.
- Smooth aluminum interior floor (on models with floor)
- Floorless models supplied with NSF listed vinyl sealers
- 26", 30" or 36" wide, self-closing doors with Fast-Trak® door frame
- Deadbolt locking handle with independent key/padlock feature and inside safety release
- Two heavy duty cam-lift hinges per door, top hinge field adjustable with locking set screw
- Spring actuated door closer
- Magnetic gasket
- Digital thermometer and light switch
- Floor double sweep gasket
- Perimeter door heater wire
- Vapor-proof light
- NSF, UL flame spread 25 on all panels; UL and CSA electrical listing on door sections
- UL and C-UL electrical listing on refrigeration systems
- City of Houston listed
- CN UL flame spread approval
- California State listed

- Oregon State listed
- USDA accepted
- Registered by UL to ISO 9001:2008
- 15 year panel warranty
- 18 months parts and labor warranty

### OPTIONAL FEATURES

- Outdoor membrane roof systems
- Door rain hoods
- Interior and/or exterior 30" high stainless steel or 1/8" aluminum diamond tread door kick plates
- Exterior ramp for floor models
- Interior ramps (30" & 36" wide) for floor models
- Leak detector/alarm (may be a requirement in some areas)
- Extra vapor-proof lights (shipped loose)
- Secure Guard™ Lock high security locking system
- Strip curtains (shipped loose)
- Non-skid floor strips (shipped loose)
- Shelving systems
- 1-5/8" screed for use with 5/8" tile after walk-in erection
- 5" thick panel models available - additional lead time required



Nor-Lake, Inc.  
Registered to ISO 9001:2008  
File No. 10001816

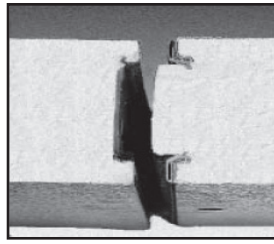
FAST-TRAK® WALK-INS

# WALK-IN SPECIFICATIONS

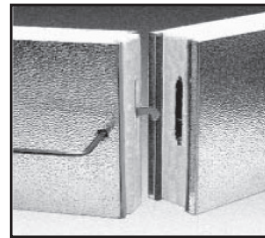
Fast-Trak® walk-ins are built of modular panels, and are insulated with foamed-in-place HFC-134a polyurethane insulation which is CFC and HCFC free. Each panel is designed to ensure ease of installation, long term reliability and high insulating efficiency.

- A. All panels are manufactured with male and female mating rails to ensure proper alignment during installation. The polyurethane insulation wraps around the return bend metal seams on both section to create a lightweight panel of exceptional strength and durability. All panels are a full four (4) inches thick and provide a superior insulating value.
- B. The foamed-in-place cam locking fasteners ensure an airtight seal for maximum energy efficiency.
- C. Fast-Trak® panel gaskets around the outer perimeter of the panel are continuous, without cuts or breaks at corners. The Nor-Lake patented gasket design provides a foamed-in-place gasket as an integral part of the panel. Gaskets cannot fall off or pull off during shipment or installation.
- D. Panels lock together tightly to assure an energy efficient walk-in.
- E. Edge caps for ends of floor and ceiling panels are foamed-in-place rather than overlapped or mechanically fastened. Edge caps cannot come loose, and they stay in place through the life of the walk-in.
- F. Panel Finishes:  
Interior and exterior complete to be 26 gauge corrosion resistant stucco embossed coated steel. Models supplied with a floor will include a smooth aluminum interior floor surface.

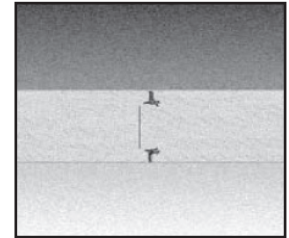
**Insulation:**  
Panels to be four (4) inches thick, metal clad and foamed-in-place with HFC-134a polyurethane insulation which is CFC and HCFC free.



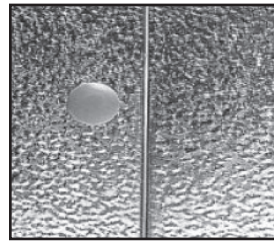
A.



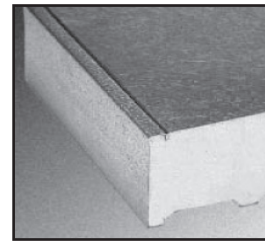
B.



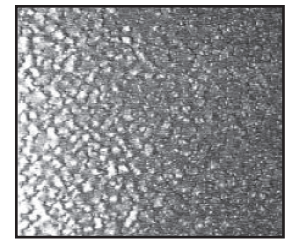
C.



D.

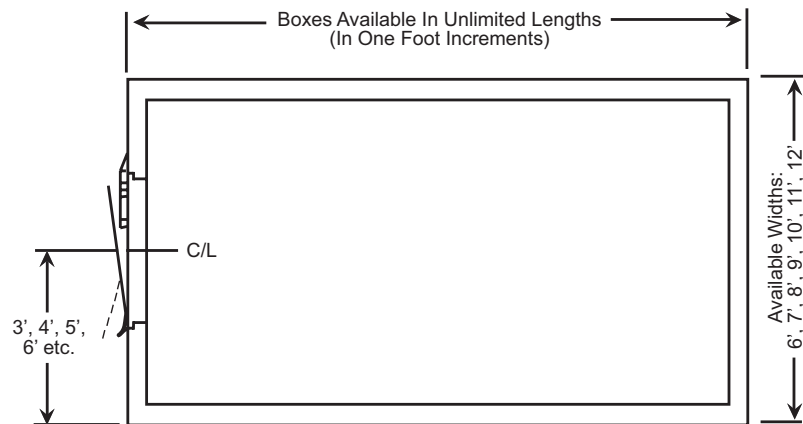


E.

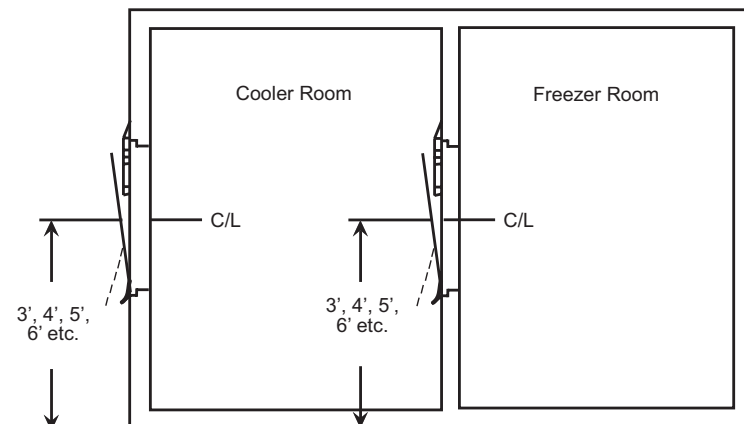


F.

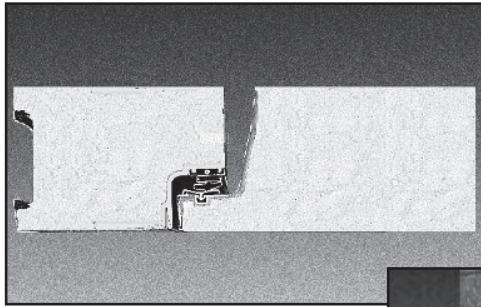
## FAST-TRAK® WALK-INS AVAILABLE IN BOTH SINGLE COMPARTMENT WALK-INS OR COOLER/FREEZER COMBINATIONS



Note: The Walk-In Door Can Be Located On Any Wall.



Note: The Partition Door Must Open Into The 35° Compartment.



**DOORS FEATURE A STEPPED PROFILE DESIGN**



**VAPOR PROOF LIGHT FIXTURE**



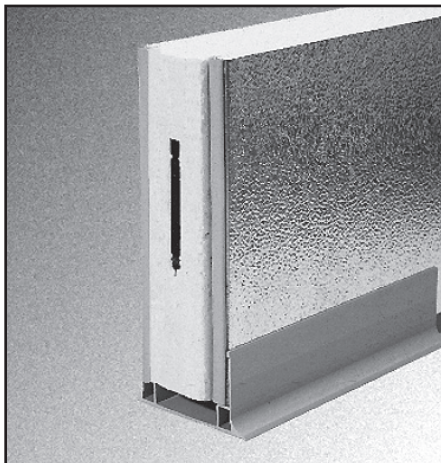
**SPRING ACTUATED DOOR CLOSER**



**DEADBOLT LOCKING HANDLE**

**NL 9800 Deadbolt locking handle with independent key/padlock feature and inside safety release.**

**DIGITAL THERMOMETER/ LIGHT SWITCH**



**FLOORLESS MODELS ARE SUPPLIED WITH A PATENTED VINYL FLOOR SEALER**

## DOOR

Door sections manufactured at Nor-Lake are factory tested to assure proper fit, performance and alignment. All doors feature a stepped profile design that serves as a barrier to air flow which results in an energy efficient door system.

Each Fast-Trak® walk-in compartment is equipped with a 26", 30" or 36" wide x 78" high door. The door is self-closing, flush mounted, infitting and constructed to incorporate heavy duty, molded ABS breaker which is permanently foamed-in-place.

Doors are available with right or left side hinges and include two cam-lift hinges, top hinge field adjustable with locking set screw, magnetic gasket, double sweep gasket, spring actuated door closer, NL 9800 deadbolt locking handle with independent key/padlock feature and inside safety release. The doors are pre-hung in a four foot wide frame panel which is equipped with replaceable perimeter heater wire, magnetic stainless steel trim, vapor-proof light fixture and switch with exterior pilot indicator light and digital thermometer.

The door section is completely pre-wired within concealed conduit inside the door frame panel. 115/60/1 electrical is field wired to a junction box which is surface mounted on the interior frame above the vapor proof light fixture.

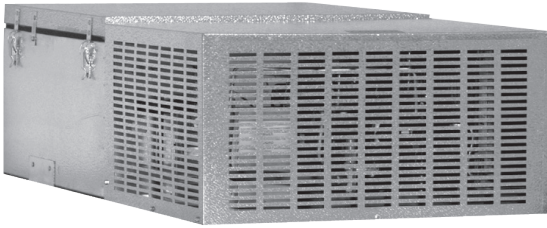
Hinges and door handle are mounted to 1/2" synthetic insulated tapping plates. Each door section is complete with a steel threshold.

## FLOOR CONSTRUCTION

Floor panels (when supplied) are similar in construction to the wall panels except they are made to withstand uniformly distributed floor loads of up to 800 pounds per square foot. The interior floor metal is smooth aluminum.

Floorless models, are supplied with a patented vinyl floor sealer to stop conductivity at floor level. This unique sealer sits flat on existing floors and fits tightly against the interior/exterior wall panels. The walk-in wall panel is supported on the shoulder of the sealer so the foam edge is free of compressing weight. The vinyl floor sealer is NSF listed.

# FAST- TRAK® WALK-INS REMOTE REFRIGERATION SYSTEMS 5 DAY SHIPMENT



## Pre-Assembled Remote Refrigeration Systems\*

- Balanced Pre-Assembled Remote Refrigeration Systems
- In stock for 5 day shipment
- All systems UL approved
- All systems pre-piped and pre-wired
- May be ordered uncharged for field installation or...
- Pre-charged with pre-charged line lengths from 5' to 50' with quick disconnects for easy installation
- All condensing units are assembled on a heavy duty platform
- Systems include an all weather hood and outdoor controls for -20°F ambient installations



## Fast-Trak® Remote Refrigeration Systems (Field Piped & Field Charged)

38°F & 35°F Operation					
Series	Model No.	Voltage	Refrigerant	Condensing Unit MCA	Evaporator coil MCA
50	NAWD50RL-#BYH	115/60/1	R-404A	14.8	0.9
75	NAWD75RL4-#BYH	115/208/230/60/1	R-404A	12.4	0.9
125	NAWD125RL4-#BYH	115/208/230/60/1	R-404A	11.7	1.8
150	NAWD150RL4-#BYH	115/208/230/60/1	R-404A	16.5	1.8
200	NAWD200RL4-#BYH	115/208/230/60/1	R-404A	15.9	1.8
-10°F Operation					
75	LAWD75RL4-#BYH	208/230/60/1	R-404A	13.7	4.4
100	LAWD100RL4-#BYH	208/230/60/1	R-404A	17.2	7.0
150	LAWD150RL4-#BYH	208/230/60/1	R-404A	26.2	7.0
200	LAWD200RL4-#BYH	208/230/60/1	R-404A	26.7	8.7

Option: Pre-charged line sets from 5' to 50'

\*System sizes limited to models listed above



**NORLAKE**<sup>®</sup>

Revision Date: 06/12  
©2012 Nor-Lake, Inc.  
Printed in the USA  
Part Number: 101627