

# Hoshizaki America, Inc.

## Commercial Series Refrigerated Kitchen Equipment

### Models

Undercounter, Worktop, Prep Table

CRMR27(-01)(-W)(-W01)(-8)(-12M)

CRMF27(-01)(-W)(-W01)

CRMR48(-01)(-W)(-W01)(-8)(-12)(-12M)(-18M)

CRMF48(-01)(-W)(-W01)

CRMR60(-W)(-8)(-12)(-12M)(-16)(-18M)(-24M)

CRMF60(-W)

CRMR72(-W)(-12)(-16)(-18)(-18M)(-24M)(-30M)



“A Superior Degree  
of Reliability”

[www.hoshizaki.com](http://www.hoshizaki.com)

## PARTS LIST



Number: 71335  
Issued: 8-19-2011  
Revised: 12-20-2012

# CONTENTS

Auxiliary Codes.....	3
Note About Ordering Parts .....	3
A. Main Assembly .....	6
CRMR27(-01)(-W)(-W01)(-8)(-12M), CRMF27(-01)(-W)(-W01) .....	6
CRMR48(-01)(-W)(-W01)(-8)(-12)(-12M)(-18M), CRMF48(-01)(-W)(-W01) .....	8
CRMR60(-W)(-8)(-12)(-12M)(-16)(-18M)(-24M), CRMF60(-W) .....	10
CRMR72(-W)(-12)(-16)(-18)(-18M)(-24M)(-30M).....	13
B. Refrigeration Circuit.....	16
CRMR27(-01)(-W)(-W01)(-8)(-12M) .....	16
CRMF27(-01)(-W)(-W01) .....	18
CRMR48(-01)(-W)(-W01)(-8)(-12)(-12M)(-18M).....	20
CRMF48(-01)(-W)(-W01) .....	22
CRMR60(-W)(-8)(-12)(-12M)(-16)(-18M)(-24M).....	26
CRMF60(-W).....	28
CRMR72(-W)(-12)(-16)(-18)(-18M)(-24M)(-30M).....	30
C. Door-Right Hinged.....	32
D. Door-Left Hinged .....	34
E. Accessories .....	36

## Auxiliary Codes

### **27**

#### **Refrigerator**

##### **CRMR27**

A-5 July 2011  
B-5 January 2012  
C-5 TBD 2013  
C-6 TBD 2013

##### **CRMR27-01**

C-5 TBD 2013  
C-6 TBD 2013

##### **CRMR27-W**

A-5 December 2011  
B-5 January 2012  
C-5 TBD 2013  
C-6 TBD 2013

##### **CRMR27-W01**

B-5 August 2012  
C-5 TBD 2013  
C-6 TBD 2013

##### **CRMR27-8**

B-5 March 2012  
C-5 TBD 2013  
C-6 TBD 2013

##### **CRMR27-12M**

B-5 February 2012  
C-5 TBD 2013  
C-6 TBD 2013

#### **Freezer**

##### **CRMF27**

A-5 July 2011  
B-5 January 2012  
C-5 TBD 2013  
C-6 TBD 2013

##### **CRMF27-01**

C-5 TBD 2013  
C-6 TBD 2013

##### **CRMF27-W**

A-5 December 2011  
B-5 January 2012  
C-5 TBD 2013  
C-6 TBD 2013

### **48**

#### **Refrigerator**

##### **CRMR48**

A-5 August 2011  
B-5 January 2012  
C-5 TBD 2013  
C-6 TBD 2013

##### **CRMR48-01**

B-5 August 2012  
C-5 TBD 2013  
C-6 TBD 2013

#### **CRMR48-W**

A-5 December 2011  
B-5 February 2012  
C-5 TBD 2013  
C-6 TBD 2013

##### **CRMR48-W01**

C-5 TBD 2013  
C-6 TBD 2013

##### **CRMR48-8**

B-5 March 2012  
C-5 TBD 2013  
C-6 TBD 2013

##### **CRMR48-12**

B-5 March 2012  
C-5 TBD 2013  
C-6 TBD 2013

##### **CRMR48-12M**

B-5 March 2012  
C-5 TBD 2013  
C-6 TBD 2013

##### **CRMR48-18M**

B-5 February 2012  
C-5 TBD 2013  
C-6 TBD 2013

#### **Freezer**

##### **CRMF48**

A-5 November 2011  
B-5 January 2012  
B-6 July 2012  
C-5 TBD 2013  
C-6 TBD 2013

##### **CRMF48-01**

C-5 TBD 2013  
C-6 TBD 2013

##### **CRMF48-W**

A-5 December 2011  
B-5 February 2012  
B-6 July 2012  
C-5 TBD 2013  
C-6 TBD 2013

##### **CRMF48-W01**

C-5 TBD 2013  
C-6 TBD 2013

### **60**

#### **Refrigerator**

##### **CRMR60**

B-5 August 2012  
C-5 TBD 2013  
C-6 TBD 2013

##### **CRMR60-W**

B-5 August 2012  
C-5 TBD 2013  
C-6 TBD 2013

## Auxiliary Code Breakdown

The auxiliary code is the first two characters in the serial number. The first character indicates the year. Years progress or regress in alphabetical order. The series runs from "A" through "V" and the letters "I" and "O" are skipped. The second character indicates significant part changes within a year. Base is "5" and this number advances for each change. In cases where there is a letter in parentheses, this designates the month. This is the last character in the serial number. The series runs from "(A)" through "(M)" and the letter "(I)" is skipped. This designation is only included when identifying a parts change within an auxiliary code.

## Note About Ordering Parts

Most assemblies cannot be ordered as complete units; parts in the assemblies generally must be ordered separately.

## Auxiliary Codes, continued

### **60**

#### **Refrigerator, cont.**

##### **CRMR60-8**

B-5 TBD 2012  
C-5 TBD 2013  
C-6 TBD 2013

##### **CRMR60-12**

B-5 TBD 2012  
C-5 TBD 2013  
C-6 TBD 2013

##### **CRMR60-12M**

B-5 TBD 2012  
C-5 TBD 2013  
C-6 TBD 2013

##### **CRMR60-16**

B-5 TBD 2012  
C-5 TBD 2013  
C-6 TBD 2013

##### **CRMR60-18M**

B-5 TBD 2012  
C-5 TBD 2013  
C-6 TBD 2013

##### **CRMR60-24M**

B-5 TBD 2012  
C-5 TBD 2013  
C-6 TBD 2013

### **Freezer**

##### **CRMF60**

C-5 January 2013  
C-6 TBD 2013

##### **CRMF60-W**

B-5 TBD 2012  
C-5 TBD 2013  
C-6 TBD 2013

### **72**

#### **Refrigerator**

##### **CRMR72**

B-5 July 2012  
C-5 TBD 2013  
C-6 TBD 2013

##### **CRMR72-W**

B-5 August 2012  
C-5 TBD 2013  
C-6 TBD 2013

##### **CRMR72-12**

B-5 TBD 2012  
C-5 TBD 2013  
C-6 TBD 2013

##### **CRMR72-16**

B-5 TBD 2012  
C-5 TBD 2013  
C-6 TBD 2013

##### **CRMR72-18**

B-5 TBD 2012  
C-5 TBD 2013  
C-6 TBD 2013

##### **CRMR72-18M**

B-5 TBD 2012  
C-5 TBD 2013  
C-6 TBD 2013

##### **CRMR72-24M**

B-5 TBD 2012  
C-5 TBD 2013  
C-6 TBD 2013

##### **CRMR72-30M**

B-5 TBD 2012  
C-5 TBD 2013  
C-6 TBD 2013

## Auxiliary Code Breakdown

The auxiliary code is the first two characters in the serial number. The first character indicates the year. Years progress or regress in alphabetical order. The series runs from "A" through "V" and the letters "I" and "O" are skipped. The second character indicates significant part changes within a year. Base is "5" and this number advances for each change. In cases where there is a letter in parentheses, this designates the month. This is the last character in the serial number. The series runs from "(A)" through "(M)" and the letter "(I)" is skipped. This designation is only included when identifying a parts change within an auxiliary code.

## Note About Ordering Parts

Most assemblies cannot be ordered as complete units; parts in the assemblies generally must be ordered separately.

**Intentionally Left Blank**

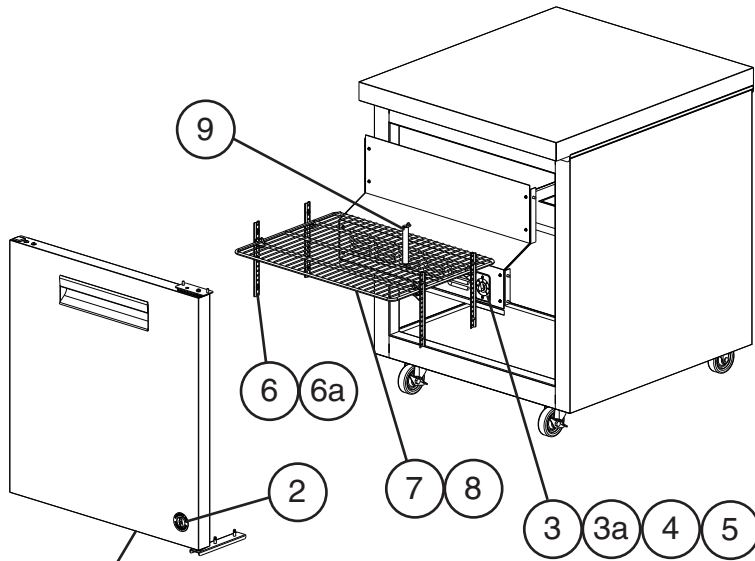
# A. Main Assembly

## CRMR27(-01)(-W)(-W01)(-8)(-12M), CRMF27(-01)(-W)(-W01)

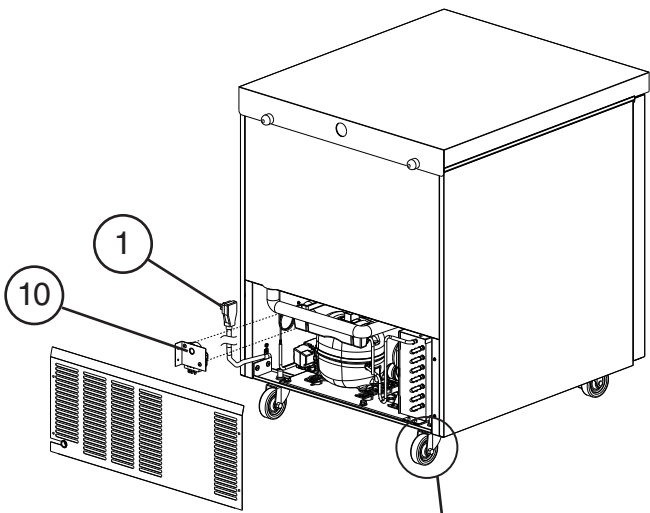
A-5 to C-6

### Undercounter, Worktop, Prep Table

#### Common Parts



For Doors, see Section "C"

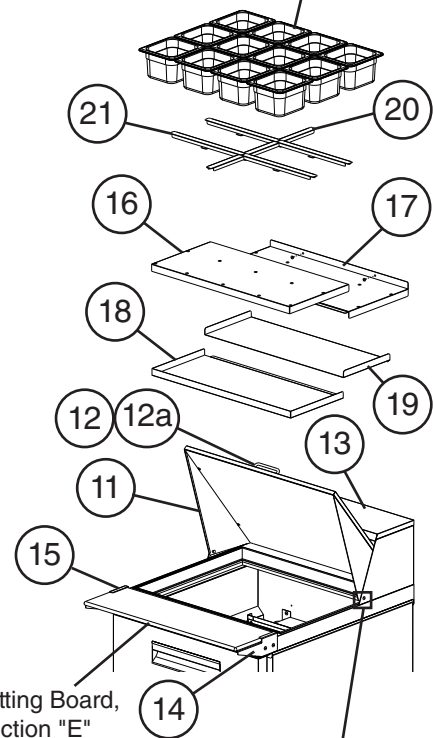


For Casters, see Section "E"

Model Shown: CRMF27

#### Prep Table Specific Parts

For Pans, see Section "E"



For Cutting Board, see Section "E"

Model Shown: CRMR27-12M

<b>Title: A. Main Assembly    Models: CRMR27(-01)(-W)(-W01)(-8)(-12M), CRMF27(-01)(-W)(-W01)</b>											
Index No.	Description	Material or Model Number	Part Number	Required Number							
				A-5 to C-6							
1	Power Cord		4A2860-01	1							
2	Penguin Label		456246-02	1							
3	Thermostat	<b>CRMR27(-01)(-W)(-W01)(-8)(-12M)</b>	3A6755-01	1							
		<b>CRMF27(-01)(-W)(-W01)</b>	3A6755-02	1							
3a	Pan Head Screw	8-32x1/2, SS	7C12I0812	2							
4	Dial Plate		3A6787-01	1							
5	Dial Knob		3A6788-01	1							
6	Pilaster		4A5417-01	4							
6a	Truss Head Screw	4x10, SS	7C32-0410	8							
7	Shelf		3A2830-07	1							
8	Shelf Clip		4A5418-01	4							
9	Thermometer		461083-01	1							
10	Defrost Timer	<b>CRMR27-8 CRMR27-12M CRMF27(-01)(-W)(-W01)</b>	3A6824-01	1							
11	Rail Cover (includes items 11a through 12a)	<b>CRMR27-8</b>	3A7326A01	1							
		<b>CRMR27-12M</b>	3A7328A01	1							
11a	Pivot Pin	<b>CRMR27-8</b>	4A5549-01	2							
12	Rail Cover Handle	<b>CRMR27-12M</b>	4A4518-01	1							
12a	Pan Head Screw (8-32x1/2, SS)		7C12I0812	2							
13	Rail Hood		3A7325A01	1							
14	Right Cutting Board Bracket	<b>CRMR27-8</b>	4A5496-01	1							
		<b>CRMR27-12M</b>	1000000393	1							
15	Left Cutting Board Bracket	<b>CRMR27-8</b>	4A5496-02	1							
		<b>CRMR27-12M</b>	1000000392	1							
16	Upper Front Air Distribution Table Panel	<b>CRMR27-8 CRMR27-12M</b>	2A6920-01	1							
17	Upper Rear Air Distribution Table Panel		2A6919-01	1							
18	Lower Front Air Distribution Table Panel		2A6922-01	1							
19	Lower Rear Air Distribution Table Panel		2A6921-01	1							
20	Rail Divider (runs front-to-back)	<b>CRMR27-8</b>	1000000336	1							
		<b>CRMR27-12M</b>	1000000343	1							
21	Rail Divider (runs side-to-side)	<b>CRMR27-8</b>	1000000342	2							
		<b>CRMR27-12M</b>		4							

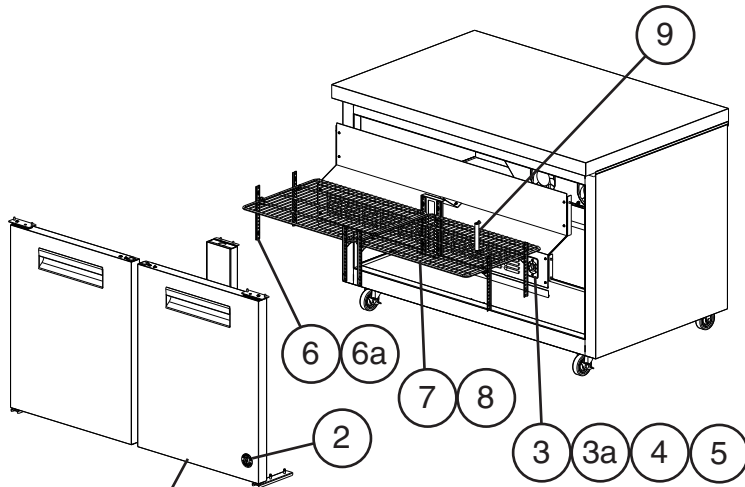
# A. Main Assembly

CRMR48(-01)(-W)(-W01)(-8)(-12)(-12M)(-18M), CRMF48(-01)(-W)(-W01)

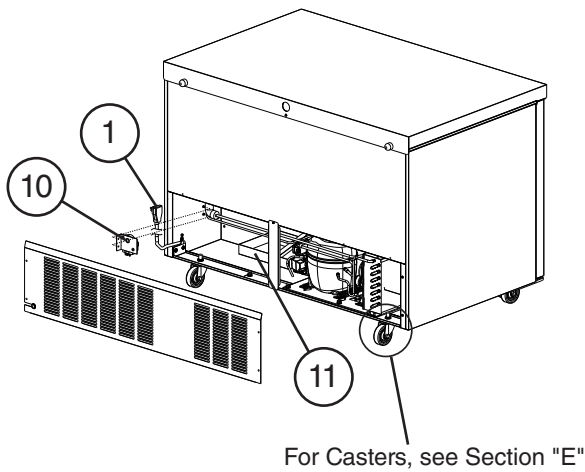
A-5 to C-6

## Undercounter, Worktop, Prep Table

### Common Parts



For Doors, see Sections "C" and "D"

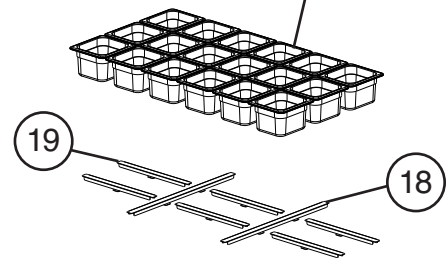


For Casters, see Section "E"

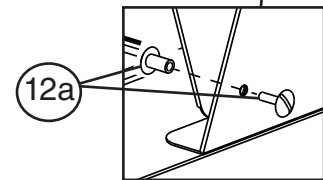
Model Shown: CRMF48

### Prep Table Specific Parts

For Pans, see Section "E"



For Cutting Board, see Section "E"



Model Shown: CRMR48-18M



Title: A. Main Assembly Models: CRMR48(-01)(-W)(-W01)(-8)(-12)(-12M)(-18M), CRMF48(-01)(-W)(-W01)											
Index No.	Description	Material or Model Number	Part Number	Required Number							
				A-5 to C-6							
1	Power Cord		4A2860-01	1							
2	Penguin Label		456246-02	1							
3	Thermostat	CRMR48(-01)(-W)(-W01)(-8)(-12)(-12M)(-18M)	3A6755-01	1							
		CRMF48(-01)(-W)(-W01)	3A6755-02	1							
3a	Pan Head Screw	8-32x1/2, SS	7C12I0812	2							
4	Dial Plate		3A6787-01	1							
5	Dial Knob		3A6788-01	1							
6	Pilaster		4A5417-01	8							
6a	Truss Head Screw	4x10, SS	7C32-0410	16							
7	Shelf		3A2830-08	2							
8	Shelf Clip		4A5418-01	8							
9	Thermometer		461083-01	1							
10	Defrost Timer	CRMR48-8 CRMR48-12 CRMR48-12M CRMR48-18M CRMF48(-01)(-W)(-W01)	3A6824-01	1							
11	Condensate Pan	CRMF48(-01)(-W)(-W01)	3A6931-01	1							
12	Rail Cover (includes items 12a through 13a)	CRMR48-8	3A7330A01	1							
		CRMR48-12	3A7331A01	1							
		CRMR48-12M	3A7332A01	1							
		CRMR48-18M	3A7333A01	1							
12a	Pivot Pin	CRMR48-8	4A5549-01	2							
13	Rail Cover Handle	CRMR48-12	4A4518-01	1							
13a	Pan Head Screw (8-32x1/2, SS)	CRMR48-12M	7C12I0812	2							
		CRMR48-18M		2							
14	Rail Hood	CRMR48-8	3A7327A01	1							
		CRMR48-12M	3A7329A01	1							
		CRMR48-18M									
15	Right Cutting Board Bracket	CRMR48-8	4A5496-01	1							
		CRMR48-12	1000000393	1							
		CRMR48-18M									
16	Left Cutting Board Bracket	CRMR48-8	4A5496-02	1							
		CRMR48-12	1000000392	1							
		CRMR48-18M									
17	Center Cutting Board Bracket	CRMR48-12M	1000000394	2							
		CRMR48-18M									
18	Rail Divider (runs front-to-back)	CRMR48-8	1000000342	1							
		CRMR48-12		2							
		CRMR48-12M		1000000343	1						
		CRMR48-18M			2						
19	Rail Divider (runs side-to-side)	CRMR48-8	1000000336	2							
		CRMR48-12		3							
		CRMR48-12M		1000000342	4						
		CRMR48-18M			6						

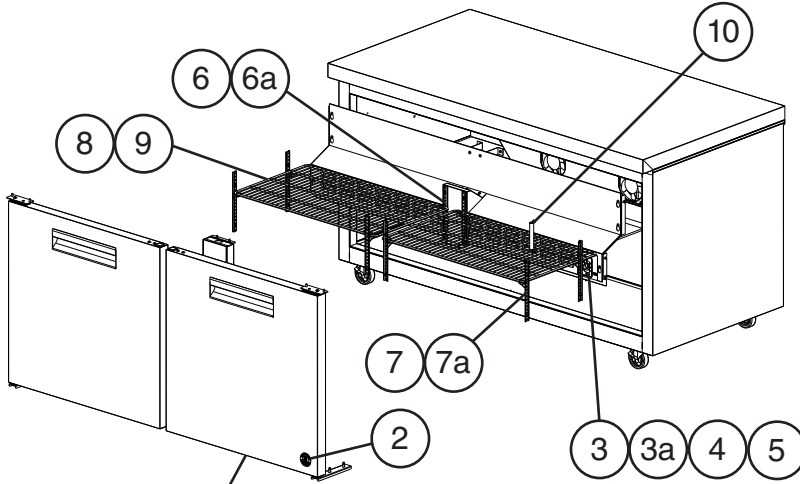
# A. Main Assembly

## CRMR60(-W)(-8)(-12)(-12M)(-16)(-18M)(-24M), CRMF60(-W)

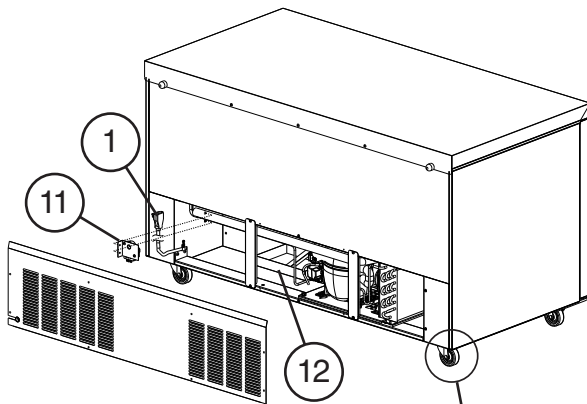
B-5 to C-6

### Undercounter, Worktop, Prep Table

#### Common Parts



For Doors, see Sections "C" and "D"

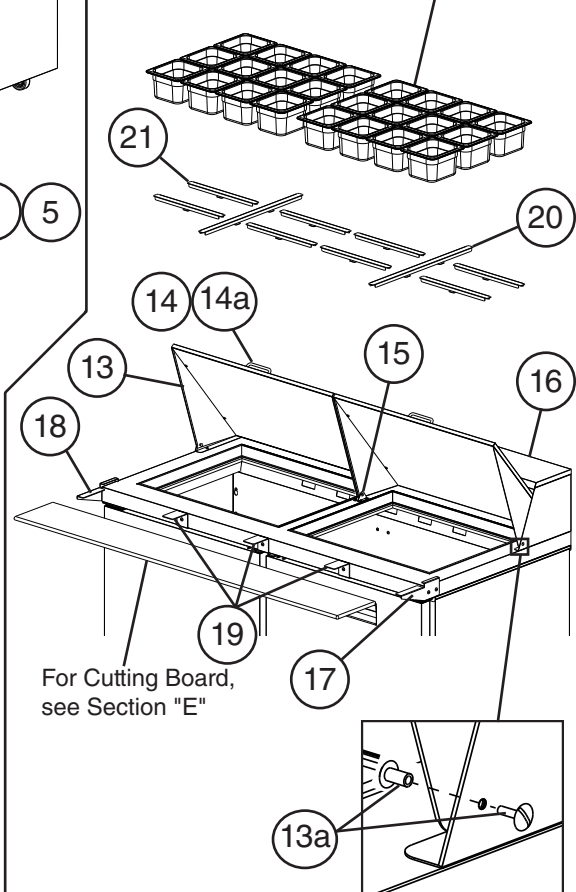


For Casters, see Section "E"

Model Shown: CRMF60

#### Prep Table Specific Parts

For Pans, see Section "E"



For Cutting Board, see Section "E"

Model Shown: CRMR60-24M

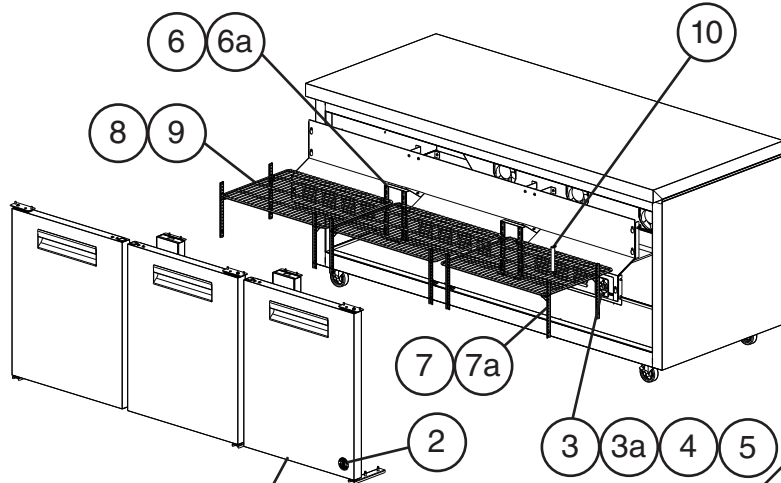
<b>Title: A. Main Assembly Models: CRMR60(-W)(-8)(-12)(-12M)(-16)(-18M)(-24M)</b>										
Index No.	Description	Material or Model Number	Part Number	Required Number						
				B-5 to C-6						
1	Power Cord		4A2860-01	1						
2	Penguin Label		456246-02	1						
3	Thermostat	<b>CRMR60(-W)(-8)(-12)(-12M)(-16)(-18M)(-24M)</b>	3A6755-03	1						
		<b>CRMF60(-W)</b>	3A6755-04	1						
3a	Pan Head Screw	8-32x1/2, SS	7C12I0812	2						
4	Dial Plate		3A6787-01	1						
5	Dial Knob		3A6788-01	1						
6	Rear Pilaster		4A5417-01	2						
6a	Truss Head Screw	4x10, SS	7C32-0410	4						
7	Side and Front Pilaster		4A5524-01	6						
7a	Truss Head Screw	4x10, SS	7C32-0410	12						
8	Shelf		3A2830-09	2						
9	Shelf Clip		4A5418-01	8						
10	Thermometer		461083-01	1						
11	Defrost Timer	<b>CRMR60-8 CRMR60-12 CRMR60-12M</b>	3A6824-01	1						
12	Condensate Pan	<b>CRMR60-16 CRMR60-18M CRMR60-24M CRMF60(-W)</b>	3A6931-01	1						
13	Rail Cover (includes items 13a through 14a)	<b>CRMR60-8</b>	3A7330A01	1						
		<b>CRMR60-12</b>	3A7331A01	1						
		<b>CRMR60-12M</b>	3A7332A01	1						
		<b>CRMR60-16</b>	3A7346A01	1						
		<b>CRMR60-18M</b>	3A7333A01	1						
	Rail Covers (includes both covers and items 13a through 15)	<b>CRMR60-24M</b>	3A7348A01	1						
13a	Pivot Pin	<b>CRMR60-8 CRMR60-12 CRMR60-12M CRMR60-16 CRMR60-18M</b>	4A5549-01	2						
		<b>CRMR60-24M</b>		3						
14	Rail Cover Handle	<b>CRMR60-8 CRMR60-12 CRMR60-12M CRMR60-16 CRMR60-18M</b>	4A4518-01	1						
		<b>CRMR60-24M</b>		2						
14a	Pan Head Screw (8-32x1/2, SS)	<b>CRMR60-8 CRMR60-12 CRMR60-12M CRMR60-16 CRMR60-18M</b>	7C12I0812	2						
		<b>CRMR60-24M</b>		4						
15	Rail Cover Bracket	<b>CRMR60-24M</b>	4A5557-01	2						

**Title: A. Main Assembly    Models: CRMR60(-W)(-8)(-12)(-12M)(-16)(-18M)(-24M)**

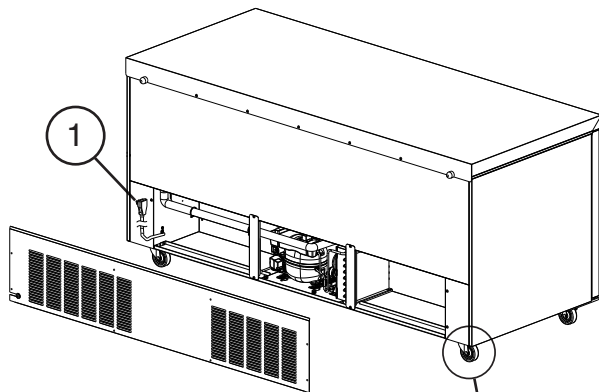
Index No.	Description	Material or Model Number	Part Number	Required Number										
				B-5 to C-6										
16	Rail Hood	CRMR60-8 CRMR60-12M	3A7327A01	1										
		CRMR60-12 CRMR60-18M	3A7329A01	1										
		CRMR60-16 CRMR60-24M	3A7372A01	1										
17	Right Cutting Board Bracket	CRMR60-8 CRMR60-12 CRMR60-16	4A5496-01	1										
		CRMR60-12M CRMR60-18M CRMR60-24M	1000000393	1										
		CRMR60-8 CRMR60-12 CRMR60-16	4A5496-02	1										
18	Left Cutting Board Bracket	CRMR60-12M CRMR60-18M CRMR60-24M	1000000392	1										
		CRMR60-8 CRMR60-12 CRMR60-16	4A5496-02	1										
		CRMR60-12M CRMR60-18M CRMR60-24M	1000000394	3										
20	Rail Divider (runs front-to-back)	CRMR60-8	1000000342	1										
		CRMR60-12		2										
		CRMR60-16		3										
		CRMR60-12M	1000000343	1										
		CRMR60-18M		2										
		CRMR60-24M		2										
21	Rail Divider (runs side-to-side)	CRMR60-8	1000000336	2										
		CRMR60-12		3										
		CRMR60-16		4										
		CRMR60-12M	1000000342	4										
		CRMR60-18M		6										
		CRMR60-24M		8										

**A. Main Assembly**  
**CRMR72(-W)(-12)(-16)(-18)(-18M)(-24M)(-30M)**  
 B-5 to C-6

**Undercounter, Worktop, Prep Table**  
**Common Parts**



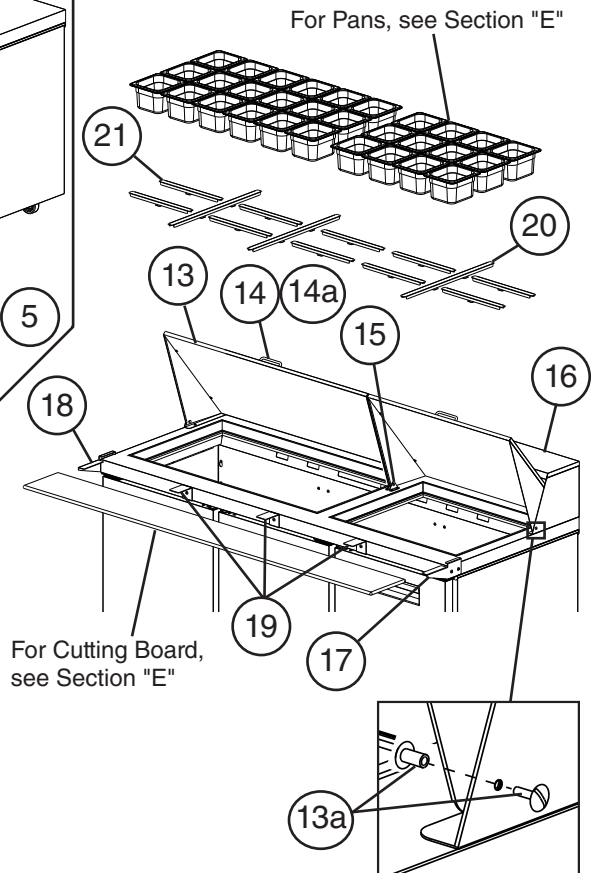
For Doors, see Sections "C" and "D"



For Casters, see Section "E"

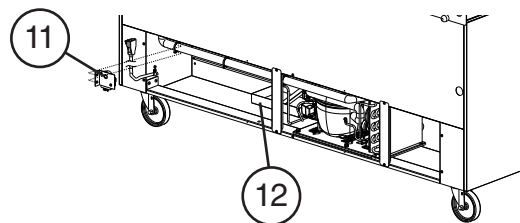
**Model Shown: CRMR72**

**Prep Table**  
**Specific Parts**



For Pans, see Section "E"

For Cutting Board, see Section "E"

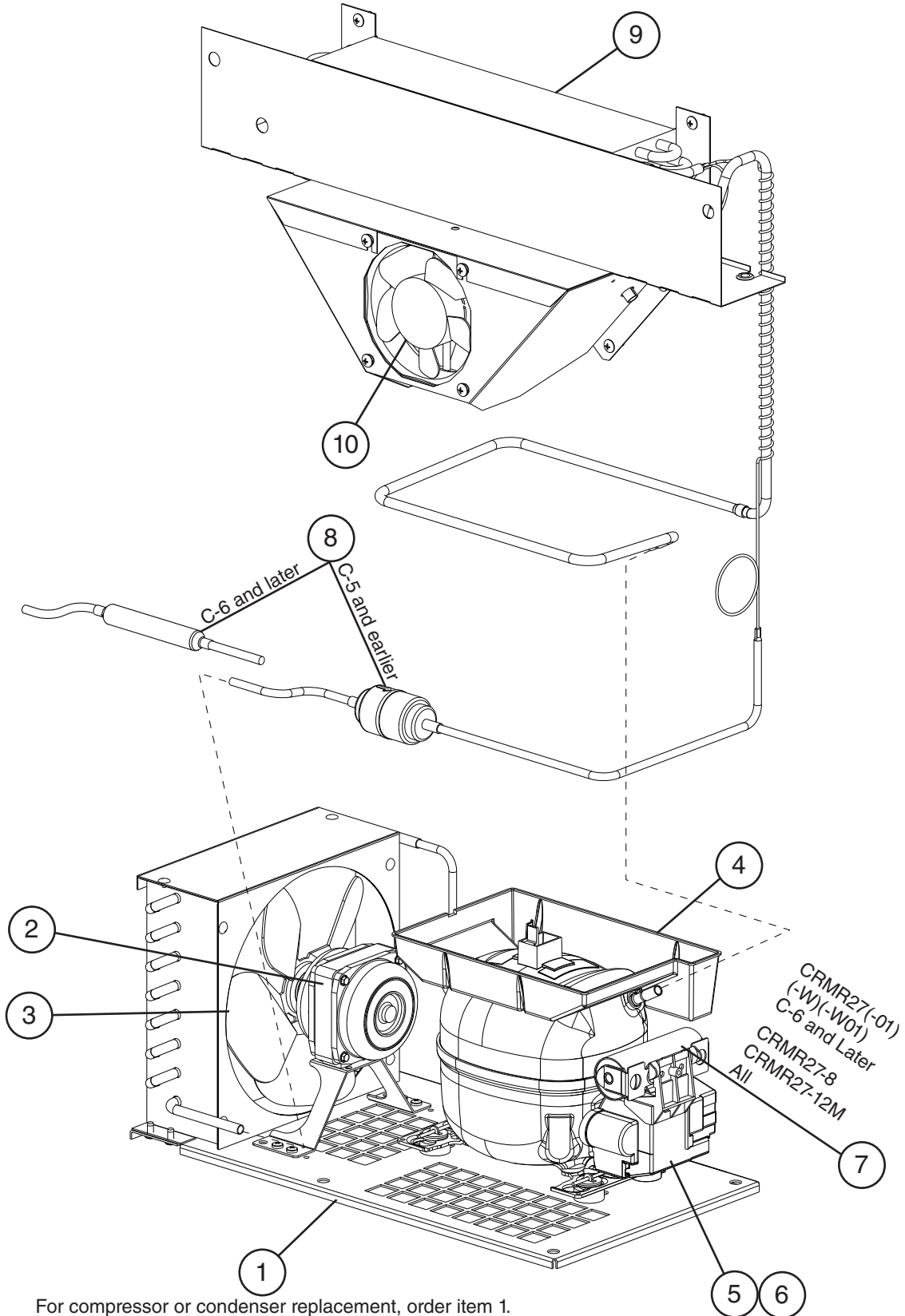


**Model Shown: CRMR72-30M**

<b>Title: A. Main Assembly    Models: CRMR72(-W)(-12)(-16)(-18)(-18M)(-24M)(-30M)</b>													
Index No.	Description	Material or Model Number	Part Number	Required Number									
				B-5 to C-6									
1	Power Cord		4A2860-01	1									
2	Penguin Label		456246-02	1									
3	Thermostat		3A6755-05	1									
3a	Pan Head Screw	8-32x1/2, SS	7C12I0812	2									
4	Dial Plate		3A6787-01	1									
5	Dial Knob		3A6788-01	1									
6	Rear Pilaster		4A5417-01	4									
6a	Truss Head Screw	4x10, SS	7C32-0410	8									
7	Side and Front Pilaster		4A5524-01	8									
7a	Truss Head Screw	4x10, SS	7C32-0410	16									
8	Shelf		3A2830-07	3									
9	Shelf Clip		4A5418-01	12									
10	Thermometer		461083-01	1									
11	Defrost Timer	<b>CRMR72-12</b>	3A6824-01	1									
12	Condensate Pan	<b>CRMR72-16</b> <b>CRMR72-18</b> <b>CRMR72-18M</b> <b>CRMR72-24M</b> <b>CRMR72-30M</b>	3A6931-01	1									
13	Rail Cover (includes items 13a through 14a)	<b>CRMR72-12</b>	3A7331A01	1									
		<b>CRMR72-16</b>	3A7346A01	1									
		<b>CRMR72-18</b>	3A7378A01	1									
		<b>CRMR72-18M</b>	3A7333A01	1									
	Rail Covers (includes items 13a through 15)	<b>CRMR72-24M</b>	3A7348A01	1									
		<b>CRMR72-30M</b>	3A7376A01	1									
13a	Pivot Pin	<b>CRMR72-12</b>	4A5549-01	2									
		<b>CRMR72-16</b>											
		<b>CRMR72-18</b>		3									
		<b>CRMR72-18M</b>											
14	Rail Cover Handle	<b>CRMR72-12</b>	4A4518-01	1									
		<b>CRMR72-16</b>											
		<b>CRMR72-18</b>		2									
		<b>CRMR72-18M</b>											
14a	Pan Head Screw (8-32x1/2, SS)	<b>CRMR72-12</b>	7C12I0812	2									
		<b>CRMR72-16</b>											
		<b>CRMR72-18</b>		4									
		<b>CRMR72-18M</b>											
15	Rail Cover Bracket	<b>CRMR72-24M</b>	4A5557-01	2									
		<b>CRMR72-30M</b>											
16	Rail Hood	<b>CRMR72-12</b>	3A7329A01	1									
		<b>CRMR72-18M</b>											
		<b>CRMR72-16</b>	3A7372A01	1									
		<b>CRMR72-24M</b>											
		<b>CRMR72-18</b>	3A7373A01	1									
		<b>CRMR72-30M</b>											

<b>Title: A. Main Assembly    Models: CRMR72(-W)(-12)(-16)(-18)(-18M)(-24M)(-30M)</b>											
Index No.	Description	Material or Model Number	Part Number	Required Number							
				B-5 to C-6							
17	Right Cutting Board Bracket	CRMR72-12 CRMR72-16 CRMR72-18	4A5496-01	1							
		CRMR72-18M CRMR72-24M CRMR72-30M	1000000393	1							
18	Left Cutting Board Bracket	CRMR72-12 CRMR72-16 CRMR72-18	4A5496-02	1							
		CRMR72-18M CRMR72-24M CRMR72-30M	1000000392	1							
19	Center Cutting Board Bracket	CRMR72-18M CRMR72-24M CRMR72-30M	1000000394	3							
20	Rail Divider (runs front-to-back)	CRMR72-12	1000000342	2							
		CRMR72-16		3							
		CRMR72-18		2							
		CRMR72-18M	1000000343	2							
		CRMR72-24M		2							
		CRMR72-30M		3							
21	Rail Divider (runs side-to-side)	CRMR72-12	1000000336	3							
		CRMR72-16		4							
		CRMR72-18	1000000343	3							
		CRMR72-18M		1000000342	6						
		CRMR72-24M	8								
		CRMR72-30M	10								

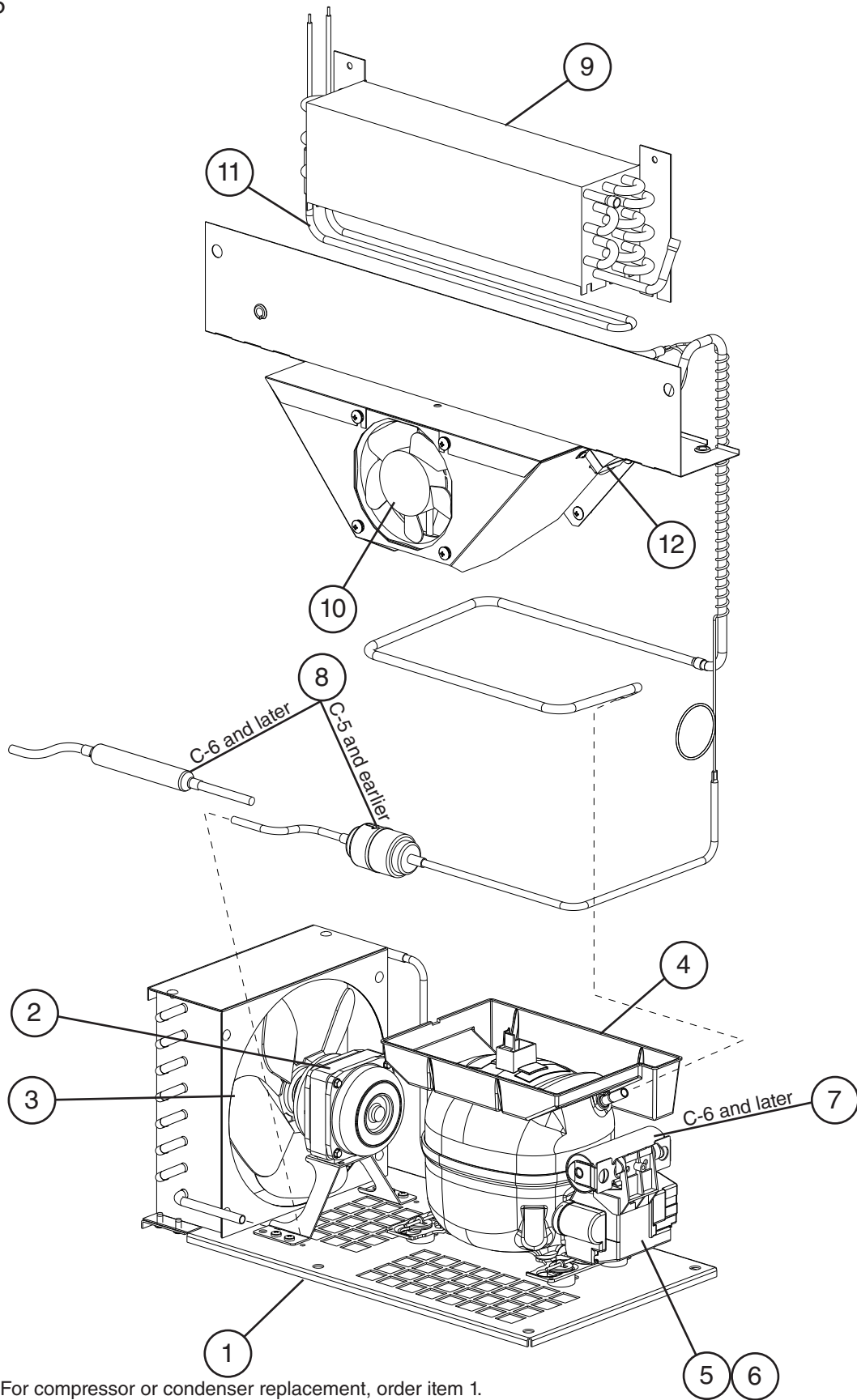
**B. Refrigeration Circuit**  
**CRMR27(-01)(-W)(-W01)(-8)(-12M)**  
 A-5 to C-6





Title: B. Refrigeration Circuit Models: CRMR27(-01)(-W)(-W01)(-8)(-12M)											
Index No.	Description	Material or Model Number	Part Number	Required Number							
				A-5 to C-5	C-6						
1	Condensing Unit (includes compressor, condenser, and items 2 through 6; C-6 and later also include items 7 and 8; compressor and condenser are not sold individually)	<b>CRMR27(-01)(-W)(-W01)</b>	3A6801-01	1	-						
			3A7623-01		1						
	Condensing Unit (includes compressor, condenser, and items 2 through 7; C-6 and later also include item 8; compressor and condenser are not sold individually)	<b>CRMR27-8 CRMR27-12M</b>	1000000273	1	-						
			3A7623-01		1						
2	Condenser Fan Motor		3A6798-01	1	1						
3	Condenser Fan Blade		3A6799-01	1	1						
4	Condensate Pan		3A6758-01	1	1						
5	External Protector (overload)		3A6746-01	1	1						
6	Start Relay	<b>CRMR27(-01)(-W)(-W01)</b>	3A6745-01	1	-						
			1000000412		1						
		<b>CRMR27-8 CRMR27-12M</b>	1000000412	1	1						
7	Start Capacitor	<b>CRMR27(-01)(-W)(-W01)</b> 233-280MFD, 165VAC	1000000279		1						
			<b>CRMR27-8 CRMR27-12M</b> 233-280MFD, 165VAC	1000000279	1	1					
8	Drier		4A1113-01	1	-						
			4A5576-01		1						
9	Evaporator		2A6627-01	1	1						
10	Evaporator Fan		4A5343-01	1	1						

**B. Refrigeration Circuit**  
**CRMF27(-01)(-W)(-W01)**  
 A-5 to C-6



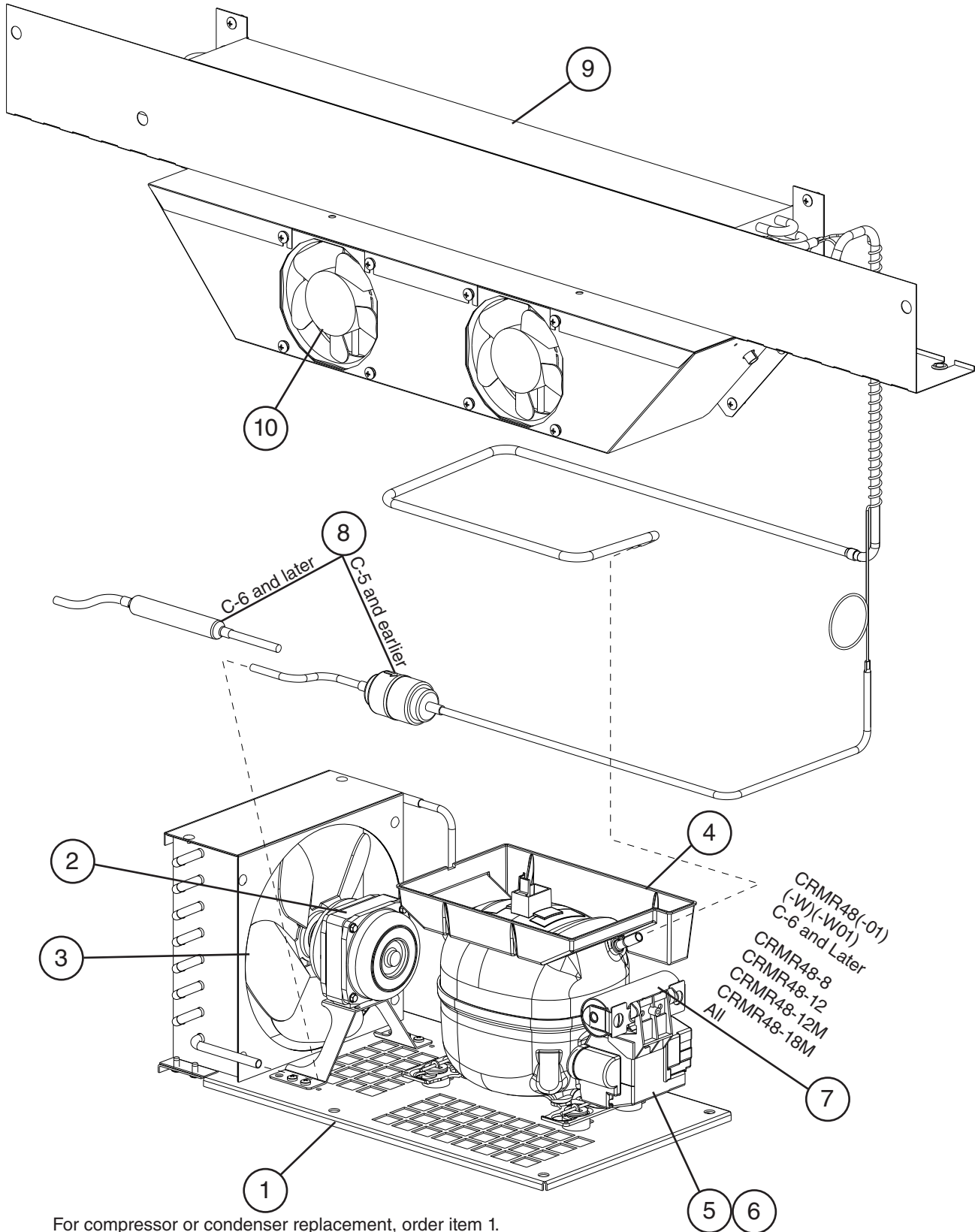
For compressor or condenser replacement, order item 1.

Title: B. Refrigeration Circuit    Models: CRMF27(-01)(-W)(-W01)											
Index No.	Description	Material or Model Number	Part Number	Required Number							
				A-5 to C-5	C-6						
1	Condensing Unit (includes compressor, condenser, and items 2 through 6; C-6 and later also include items 7 and 8; compressor and condenser are not sold individually)	<b>CRMF27(-01)(-W)(-W01)</b>	3A6802-01	1	-						
			3A7624-01		1						
2	Condenser Fan Motor		3A6798-01	1	1						
3	Condenser Fan Blade		3A6799-01	1	1						
4	Condensate Pan		3A6758-01	1	1						
5	External Protector (overload)		3A6774-01	1	1						
6	Start Relay		3A6775-01	1	-						
			3A7232-01		1						
7	Start Capacitor	270-327MFD, 165VAC	4A5525-01		1						
8	Drier		4A1113-01	1	-						
			4A5576-01		1						
9	Evaporator		2A6627-01	1	1						
10	Evaporator Fan		4A5343-01	1	1						
11	Defrost Heater		3A6443-01	1	1						
12	Defrost Thermostat		4A0954-02	1	1						

## B. Refrigeration Circuit

CRMR48(-01)(-W)(-W01)(-8)(-12)(-12M)(-18M)

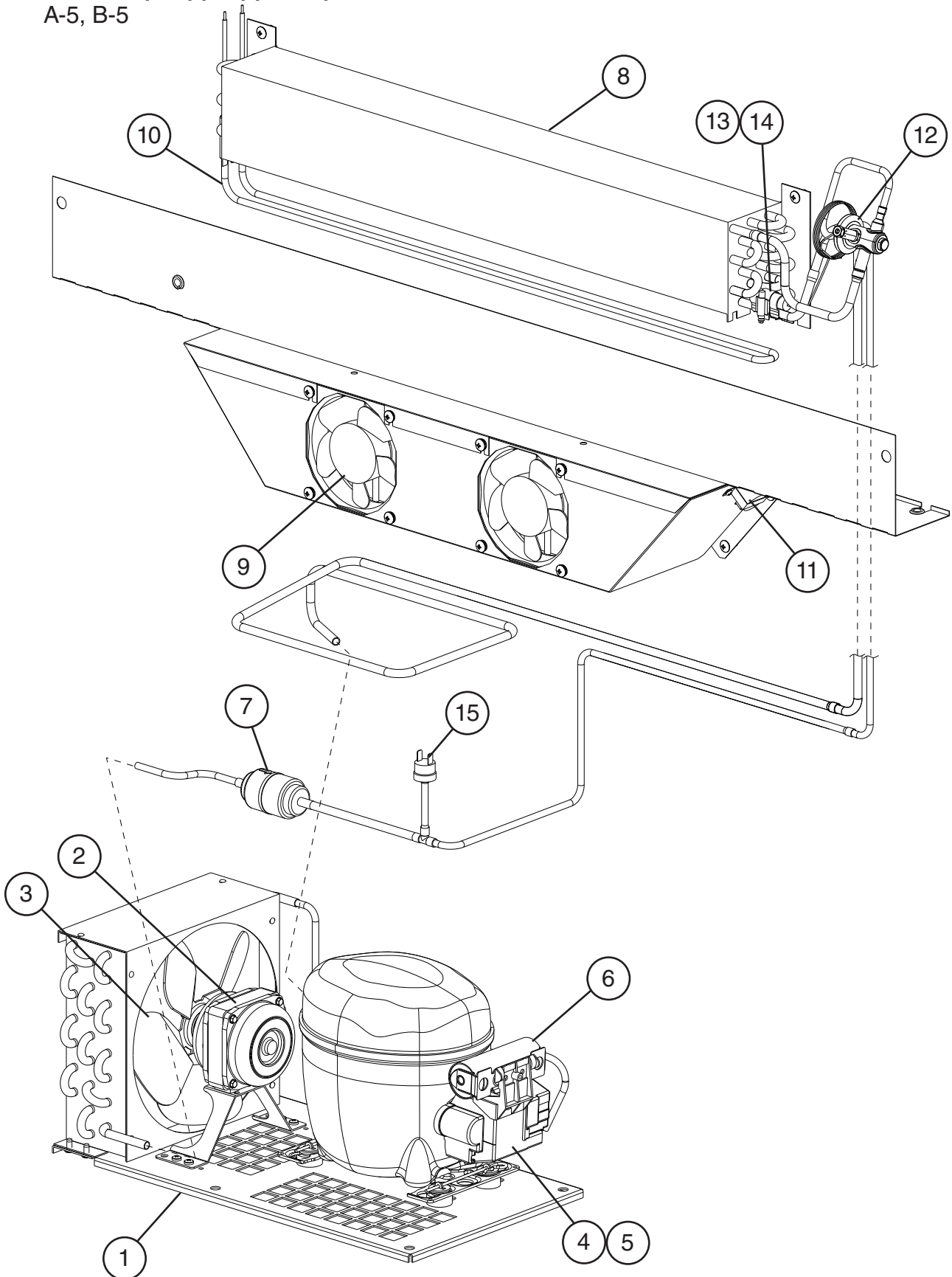
A-5 to C-6



For compressor or condenser replacement, order item 1.

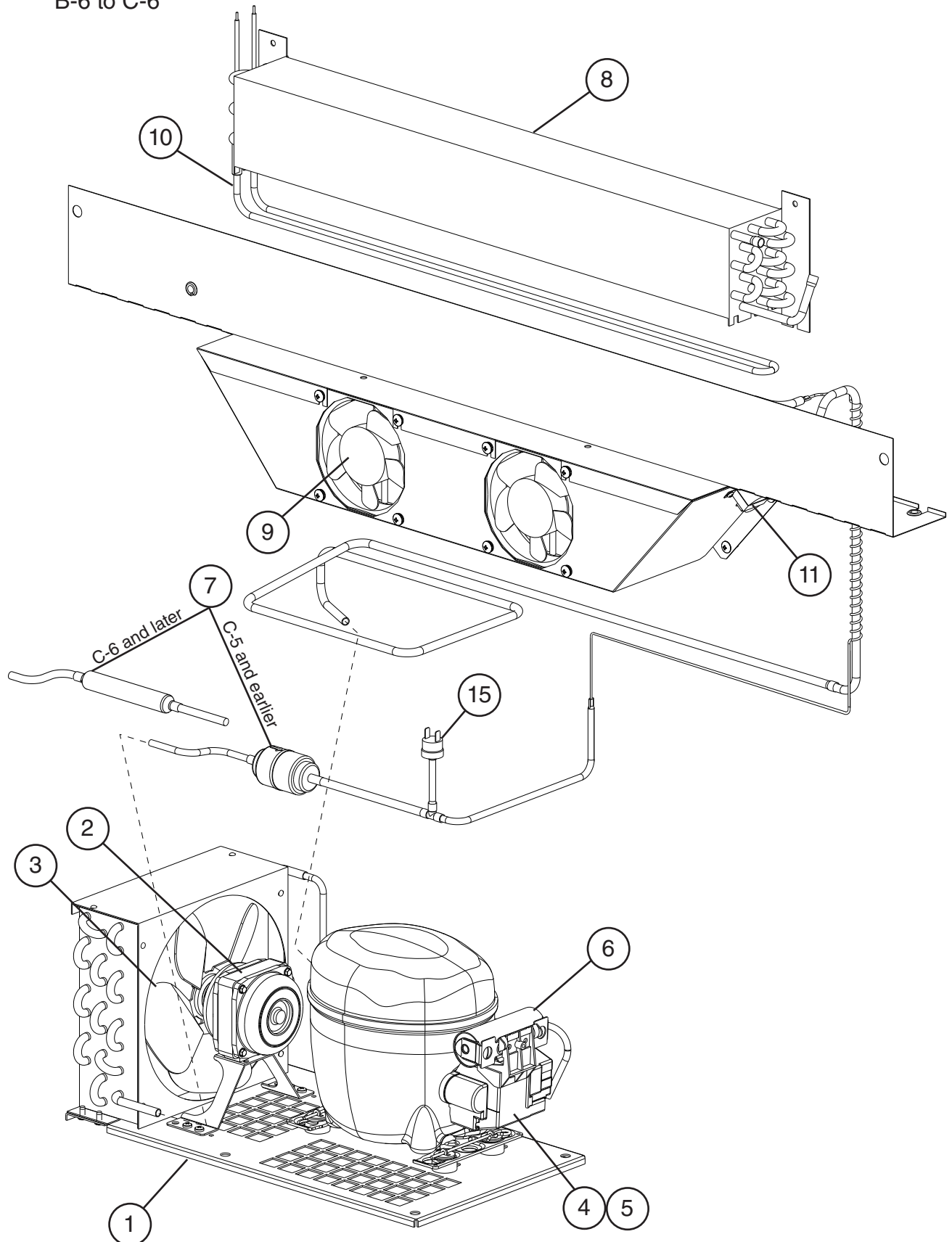
Title: B. Refrigeration Circuit    Models: CRMR48(-01)(-W)(-W01)(-8)(-12)(-12M)(-18M)											
Index No.	Description	Material or Model Number	Part Number	Required Number							
				A-5 to C-5	C-6						
1	Condensing Unit (includes compressor, condenser, and items 2 through 6; C-6 and later also include items 7 and 8; compressor and condenser are not sold individually)	<b>CRMR48(-01)(-W)(-W01)</b>	3A6801-01	1	-						
			3A7623-01		1						
	Condensing Unit (includes compressor, condenser, and items 2 through 7; C-6 and later also include item 8; compressor and condenser are not sold individually)	<b>CRMR48-8 CRMR48-12 CRMR48-12M CRMR48-18M</b>	1000000273	1	-						
			3A7623-01		1						
2	Condenser Fan Motor		3A6798-01	1	1						
3	Condenser Fan Blade		3A6799-01	1	1						
4	Condensate Pan		3A6758-01	1	1						
5	External Protector (overload)		3A6746-01	1	1						
6	Start Relay	<b>CRMR48(-01)(-W)(-W01)</b>	3A6745-01	1	-						
			1000000412		1						
		<b>CRMR48-8 CRMR48-12 CRMR48-12M CRMR48-18M</b>	1000000412	1	1						
7	Start Capacitor	<b>CRMR48(-01)(-W)(-W01)</b> 233-280MFD, 165VAC	1000000279		1						
			<b>CRMR48-8 CRMR48-12 CRMR48-12M CRMR48-18M</b> 233-280MFD, 165VAC	1000000279	1	1					
8	Drier		4A1113-01	1	-						
			4A5576-01		1						
9	Evaporator		2A6627-02	1	1						
10	Evaporator Fan		4A5343-01	2	2						

**B. Refrigeration Circuit**  
**CRMF48(-01)(-W)(-W01)**  
 A-5, B-5



For compressor or condenser replacement, order item 1.

**B. Refrigeration Circuit**  
**CRMF48(-01)(-W)(-W01)**  
B-6 to C-6



For compressor or condenser replacement, order item 1.

Title: B. Refrigeration Circuit    Models: CRMF48(-01)(-W)(-W01)											
Index No.	Description	Material or Model Number	Part Number	Required Number							
				A-5 B-5	B-6 C-5	C-6					
1	Condensing Unit (includes compressor, condenser, and items 2 through 6; C-6 and later also include item 7; compressor and condenser are not sold individually)		3A6934-01	1	1	-					
			3A7625-01			1					
2	Condenser Fan Motor		3A6798-01	1	1	1					
3	Condenser Fan Blade		3A6799-01	1	1	1					
4	External Protector (overload)		3A6936-01	1	1	1					
5	Start Relay		3A6937-01	1	1	1					
6	Start Capacitor	378-454MFD, 115V	3A6938-01	1	1	1					
7	Drier		4A1113-01	1	1	-					
			4A5576-01			1					
8	Evaporator		2A6627-02	1	1	1					
9	Evaporator Fan		4A5471-01	2	2	2					
10	Defrost Heater		3A6443-02	1	1	1					
11	Defrost Thermostat		4A0954-02	1	1	1					
12	Thermostatic Expansion Valve		4A5476-01	1	-						
13	Thermostatic Expansion Valve Bulb Holder		3A6991-01	1	-						
14	Clamp		443461-01	1	-						
15	High-Pressure Switch		4A2516-02	1	1	1					

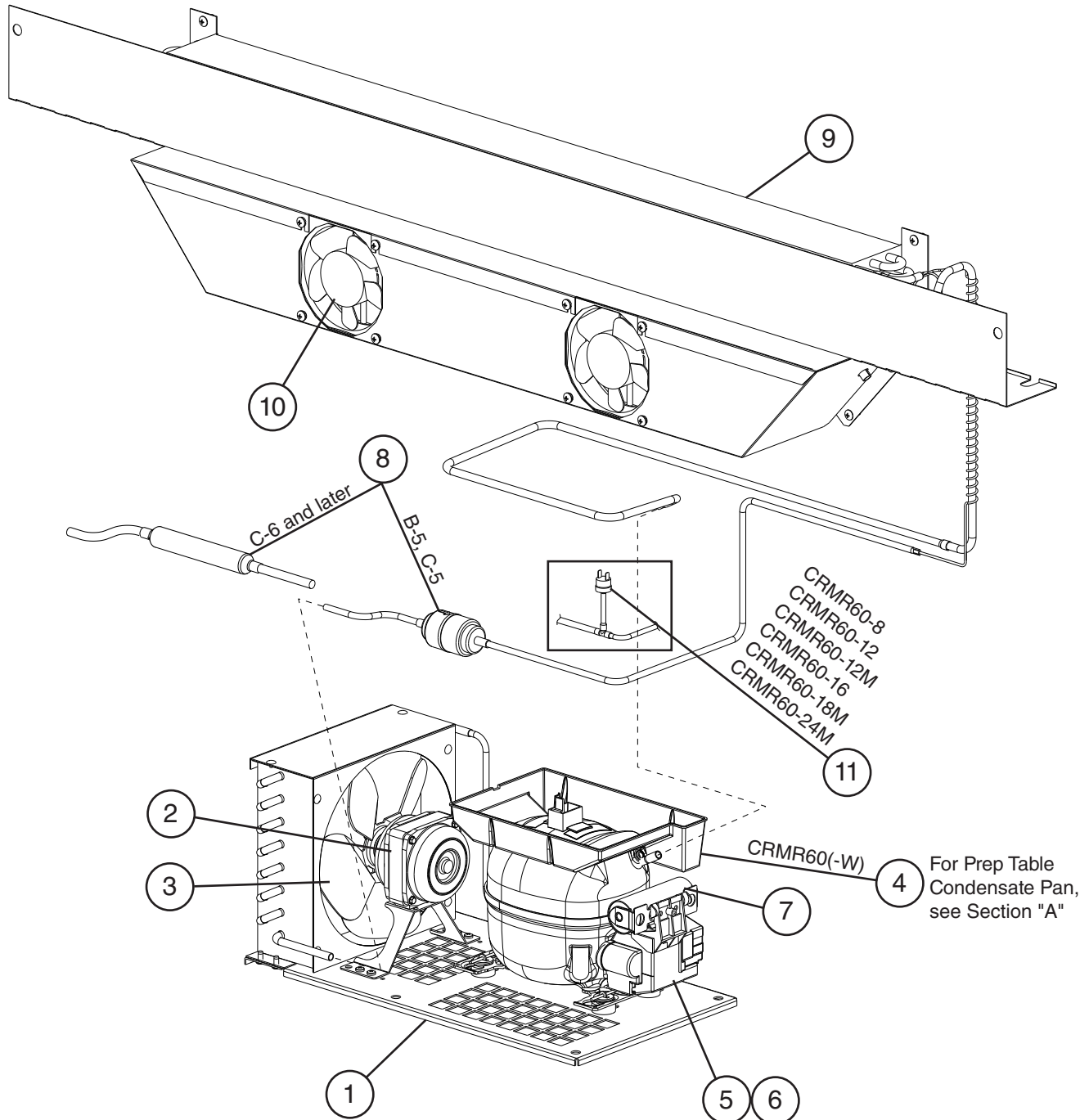


**Intentionally Left Blank**

## B. Refrigeration Circuit

CRMR60(-W)(-8)(-12)(-12M)(-16)(-18M)(-24M)

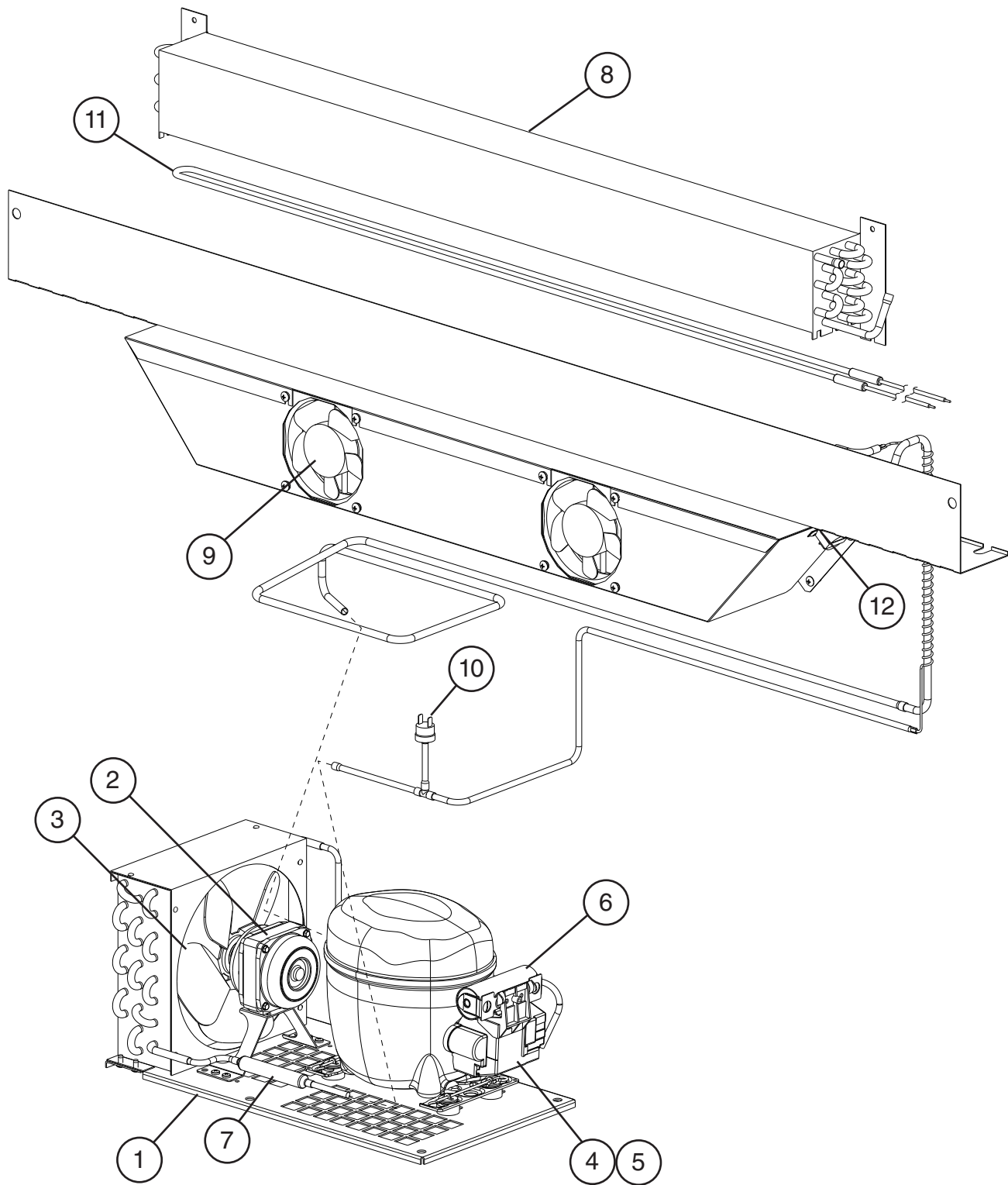
B-5 to C-6



For compressor or condenser replacement, order item 1.

Title: B. Refrigeration Circuit Models: CRMR60(-W)(-8)(-12)(-12M)(-16)(-18M)(-24M)												
Index No.	Description	Material or Model Number	Part Number	Required Number								
				B-5 C-5	C-6							
1	Condensing Unit (includes compressor, condenser, and items 2 through 7; C-6 and later also include item 8; compressor and condenser are not sold individually)	CRMR60(-W)	3A7206-01	1	-							
			3A7624-01		1							
		CRMR60-8 CRMR60-12 CRMR60-12M CRMR60-16 CRMR60-18M CRMR60-24M	3A6934-01	1	-							
			3A7625-01		1							
2	Condenser Fan Motor		3A6798-01	1	1							
3	Condenser Fan Blade		3A6799-01	1	1							
4	Condensate Pan	CRMR60(-W)	3A6758-01	1	1							
5	External Protector (overload)	CRMR60(-W)	3A6774-01	1	1							
		CRMR60-8 CRMR60-12 CRMR60-12M CRMR60-16 CRMR60-18M CRMR60-24M	3A6936-01	1	1							
6	Start Relay	CRMR60(-W)	3A7232-01	1	1							
		CRMR60-8 CRMR60-12 CRMR60-12M CRMR60-16 CRMR60-18M CRMR60-24M	3A6937-01	1	1							
7	Start Capacitor	CRMR60(-W) 270-327MFD, 165VAC	4A5525-01	1	1							
		CRMR60-8 CRMR60-12 CRMR60-12M CRMR60-16 CRMR60-18M CRMR60-24M 378-454MFD, 115V	3A6938-01	1	1							
8	Drier		4A1113-01	1	-							
			4A5576-01		1							
9	Evaporator		2A6627-03	1	1							
10	Evaporator Fan		4A5343-01	2	2							
11	High-Pressure Switch	CRMR60-8 CRMR60-12 CRMR60-12M CRMR60-16 CRMR60-18M CRMR60-24M	4A2516-01	1	1							

**B. Refrigeration Circuit**  
**CRMF60(-W)**  
C-6



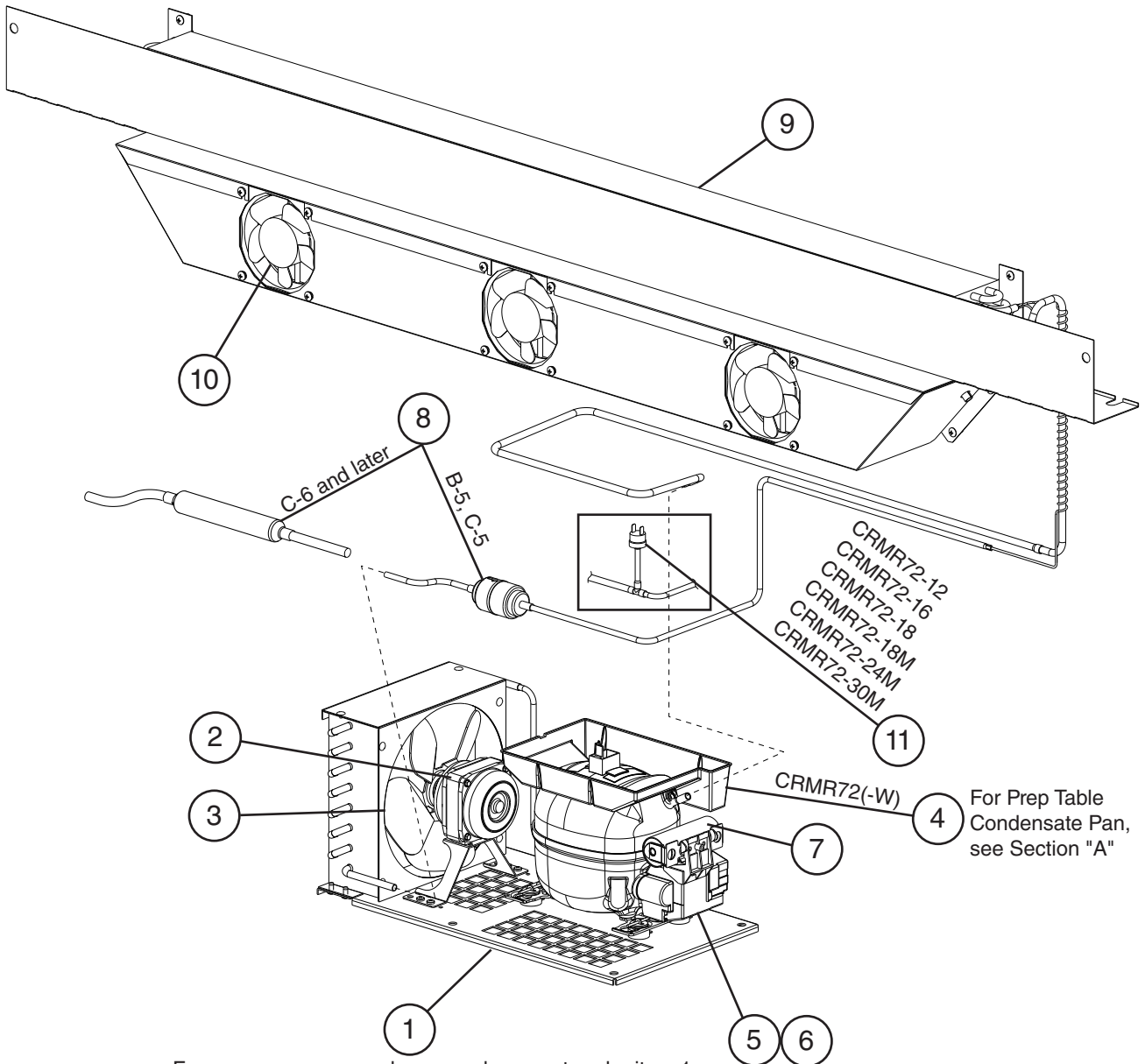
For compressor or condenser replacement, order item 1.

Title: B. Refrigeration Circuit Models: CRMF60(-W)											
Index No.	Description	Material or Model Number	Part Number	Required Number							
				C-6							
1	Condensing Unit (includes compressor, condenser, and items 2 through 7; compressor and condenser are not sold individually)	<b>CRMF60(-W)</b>	3A7625-01	1							
2	Condenser Fan Motor		3A6798-01	1							
3	Condenser Fan Blade		3A6799-01	1							
4	External Protector (overload)		3A6936-01	1							
5	Start Relay		3A6937-01	1							
6	Start Capacitor	378-454MFD, 115V	3A6938-01	1							
7	Drier		4A5576-01	1							
8	Evaporator		2A6627-03	1							
9	Evaporator Fan		4A5471-01	2							
10	High-Pressure Switch		4A2516-01	1							
11	Defrost Heater		3A7115-01	1							
12	Defrost Thermostat		4A0954-02	1							

## B. Refrigeration Circuit

CRMR72(-W)(-12)(-16)(-18)(-18M)(-24M)(-30M)

B-5 to C-6



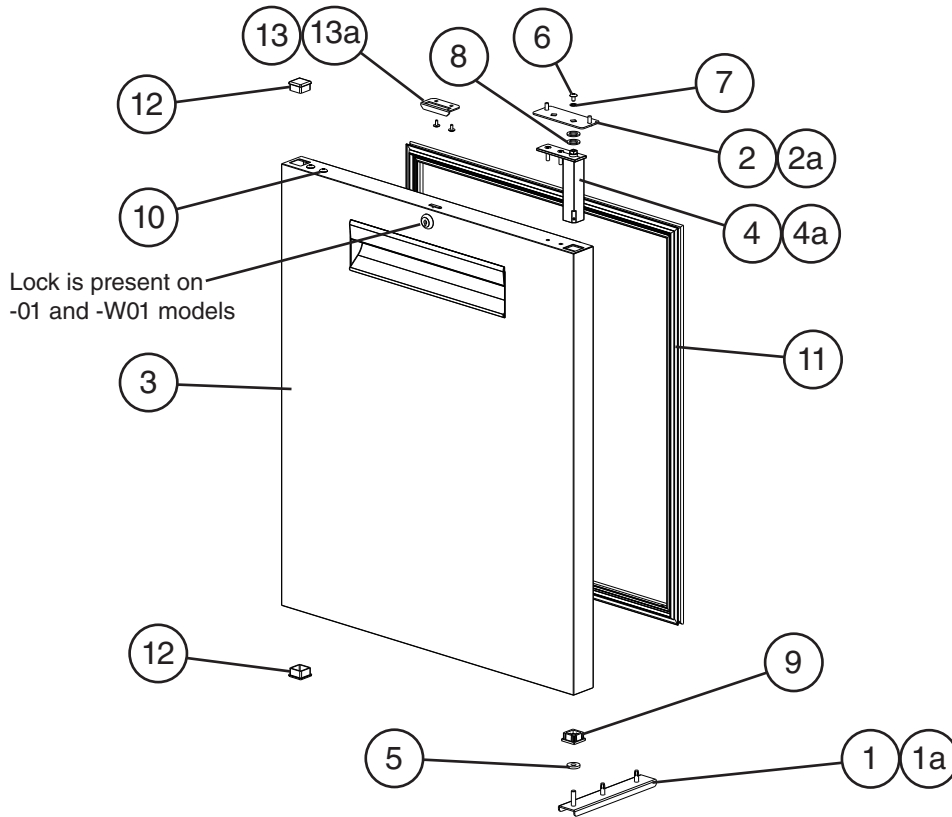
For compressor or condenser replacement, order item 1.

Title: B. Refrigeration Circuit Models: CRMR72(-W)(-12)(-16)(-18)(-18M)(-24M)(-30M)												
Index No.	Description	Material or Model Number	Part Number	Required Number								
				B-5 C-5	C-6							
1	Condensing Unit (includes compressor, condenser, and items 2 through 7; C-6 and later also include item 8; compressor and condenser are not sold individually)	CRMR72(-W)	3A7206-01	1	-							
			3A7624-01		1							
		CRMR72-12 CRMR72-16 CRMR72-18 CRMR72-18M CRMR72-24M CRMR72-30M	3A6934-01	1	-							
			3A7625-01		1							
2	Condenser Fan Motor		3A6798-01	1	1							
3	Condenser Fan Blade		3A6799-01	1	1							
4	Condensate Pan	CRMR72(-W)	3A6758-01	1	1							
5	External Protector (overload)	CRMR72(-W)	3A6774-01	1	1							
		CRMR72-12 CRMR72-16 CRMR72-18 CRMR72-18M CRMR72-24M CRMR72-30M	3A6936-01	1	1							
6	Start Relay	CRMR72(-W)	3A7232-01	1	1							
		CRMR72-12 CRMR72-16 CRMR72-18 CRMR72-18M CRMR72-24M CRMR72-30M	3A6937-01	1	1							
7	Start Capacitor	CRMR72(-W) 270-327MFD, 165VAC	4A5525-01	1	1							
		CRMR72-12 CRMR72-16 CRMR72-18 CRMR72-18M CRMR72-24M CRMR72-30M 378-454MFD, 115V	3A6938-01	1	1							
8	Drier		4A1113-01	1	-							
			4A5576-01		1							
9	Evaporator		2A6627-04	1	1							
10	Evaporator Fan		4A5343-01	3	3							
11	High-Pressure Switch	CRMR72-12 CRMR72-16 CRMR72-18 CRMR72-18M CRMR72-24M CRMR72-30M	4A2516-01	1	1							

### C. Door-Right Hinged

**CRMR27(-01)(-W)(-W01)(-8)(-12M), CRMF27(-01)(-W)(-W01),  
 CRMR48(-01)(-W)(-W01)(-8)(-12)(-12M)(-18M), CRMF48(-01)(-W)  
 (-W01), CRMR60(-W)(-8)(-12)(-12M)(-16)(-18M)(-24M), CRMF60(-W),  
 CRMR72(-W)(-12)(-16)(-18)(-18M)(-24M)(-30M)**

A-5 to C-6



Title: C. Door-Right Hinged Models: CRMR27(-01)(-W)(-W01)(-8)(-12M), CRMF27(-01)(-W)(-W01), CRMR48(-01)(-W)(-W01)(-8)(-12)(-12M)(-18M), CRMF48(-01)(-W)(-W01), CRMR60(-W)(-8)(-12)(-12M)(-16)(-18M)(-24M), CRMF60(-W), CRMR72(-W)(-12)(-16)(-18)(-18M)(-24M)(-30M)					Required Number					
Index No.	Description	Material or Model Number	Part Number	A-5 to C-6						
1	Lower Hinge Bracket		3A6681G01	1						
1a	Hex Head Tapping Bolt	1/4-20x3/4	4A5213-01	2						
2	Upper Hinge Bracket		3A6810-01	1						
2a	Truss Head Screw	5x12, SS	7C32-0512	2						



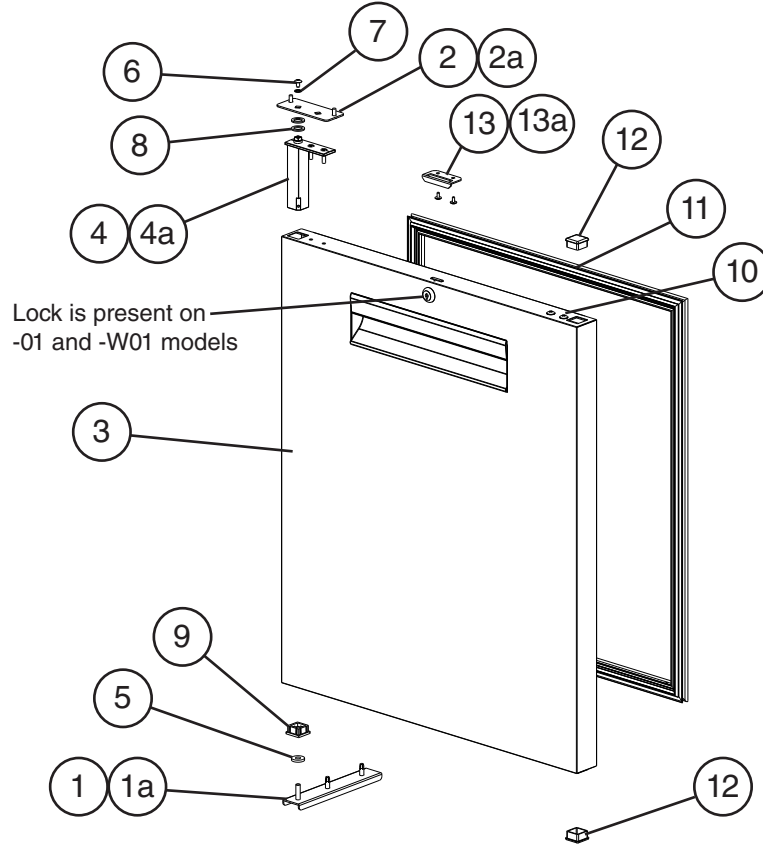
**Title: C. Door-Right Hinged Models: CRMR27(-01)(-W)(-W01)(-8)(-12M), CRMF27(-01)(-W)(-W01), CRMR48(-01)(-W)(-W01)(-8)(-12)(-12M)(-18M), CRMF48(-01)(-W)(-W01), CRMR60(-W)(-8)(-12)(-12M)(-16)(-18M)(-24M), CRMF60(-W), CRMR72(-W)(-12)(-16)(-18)(-18M)(-24M)(-30M)**

Index No.	Description	Material or Model Number	Part Number	Required Number									
				A-5 to C-6									
3	Door Assembly without Locks (includes items 4 through 12)	<b>CRMR27 (All except -01 and -W01) CRMF27 (All except -01 and -W01)</b>	2A6594G01	1									
		<b>CRMR48 (All except -01 and -W01) CRMF48 (All except -01 and -W01) CRMR72 (All)</b>	2A6596G01	1									
		<b>CRMR60 (All) CRMF60 (All)</b>	2A6778G01	1									
	Door Assembly with Locks (includes items 4 through 12)	<b>CRMR27-01 CRMR27-W01 CRMF27-01 CRMF27-W01</b>	1A2421G01	1									
		<b>CRMR48-01 CRMR48-W01 CRMF48-01 CRMF48-W01</b>	2A6761G01	1									
4	Hinge Spring Cartridge (includes items 5 through 9)		3A6258-01	1									
4a	Countersunk Screw	5x20, SS	7C42-0520	2									
5	Thrust Washer		4A5234-01	1									
6	Screw		4A5230-01	1									
7	Lockwasher		4A5231-01	1									
8	Thrust Washer		4A5233-01	2									
9	Bearing		4A5232-01	1									
10	Truss Head Screw (filler screws)	5x10, SS	7C32-0510	2									
11	Gasket	<b>CRMR27 (All) CRMF27 (All)</b>	2A5192-05	1									
		<b>CRMR48 (All) CRMF48 (All) CRMR72 (All)</b>	2A5192-06	1									
		<b>CRMR60 (All) CRMF60 (All)</b>	2A5192-09	1									
12	End Cap		4A5432-01	2									
13	Strike Plate for Doors with Locks	<b>-01 and -W01 Models</b>	4A5493-01	1									
13a	T2 Screw	<b>-01 and -W01 Models</b> 4x8, SS	7P32-0408	2									

### D. Door-Left Hinged

**CRMR48(-01)(-W)(-W01)(-8)(-12)(-12M)(-18M), CRMF48(-01)(-W)(-W01),  
 CRMR60(-W)(-8)(-12)(-12M)(-16)(-18M)(-24M), CRMF60(-W),  
 CRMR72(-W)(-12)(-16)(-18)(-18M)(-24M)(-30M)**

A-5 to C-6



Title: D. Door-Left Hinged Models: CRMR48(-01)(-W)(-W01)(-8)(-12)(-12M)(-18M), CRMF48(-01)(-W)(-W01), CRMR60(-W)(-8)(-12)(-12M)(-16)(-18M)(-24M), CRMF60(-W), CRMR72(-W)(-12)(-16)(-18)(-18M)(-24M)(-30M)															
Index No.	Description	Material or Model Number	Part Number	Required Number											
				A-5 to C-6											
1	Lower Hinge Bracket		3A6681G01	1											
1a	Hex Head Tapping Bolt	1/4-20x3/4	4A5213-01	2											
2	Upper Hinge Bracket		3A6810-01	1											
2a	Truss Head Screw	5x12, SS	7C32-0512	2											
3	Door Assembly without Locks (includes items 4 through 12)	CRMR48 (All except -01 and -W01) CRMF48 (All except -01 and -W01) CRMR72 (All)	2A6598G01	1											
		CRMR60 (All) CRMF60 (All)	2A6787G01	1											
	Door Assembly with Locks (includes items 4 through 12)	CRMR48-01 CRMR48-W01 CRMF48-01 CRMF48-W01	2A6759G01	1											

Title: D. Door-Left Hinged Models: CRMR48(-01)(-W)(-W01)(-8)(-12)(-12M)(-18M), CRMF48(-01)(-W)(-W01), CRMR60(-W)(-8)(-12)(-12M)(-16)(-18M)(-24M), CRMF60(-W), CRMR72(-W)(-12)(-16)(-18)(-18M)(-24M)(-30M)											
Index No.	Description	Material or Model Number	Part Number	A-5 to C-6	Required Number						
4	Hinge Spring Cartridge (includes items 5 through 9)		3A6258-01	1							
4a	Countersunk Screw	5x20, SS	7C42-0520	2							
5	Thrust Washer		4A5234-01	1							
6	Screw		4A5230-01	1							
7	Lockwasher		4A5231-01	1							
8	Thrust Washer		4A5233-01	2							
9	Bearing		4A5232-01	1							
10	Truss Head Screw (filler screws)	5x10, SS	7C32-0510	2							
11	Gasket	CRMR48 (All) CRMF48 (All) CRMR72 (All)	2A5192-06	1							
		CRMR60 (All)	2A5192-09	1							
12	End Cap		4A5432-01	2							
13	Strike Plate for Doors with Locks	-01 and -W01 Models	4A5493-01	1							
13a	T2 Screw	-01 and -W01 Models 4x8, SS	7P32-0408	2							

## E. Accessories

**CRMR27(-01)(-W)(-W01)(-8)(-12M), CRMF27(-01)(-W)(-W01), CRMR48(-01)(-W)(-W01)(-8)(-12)(-12M)(-18M), CRMF48(-01)(-W)(-W01), CRMR60(-W)(-8)(-12)(-12M)(-16)(-18M)(-24M), CRMF60(-W), CRMR72(-W)(-12)(-16)(-18)(-18M)(-24M)(-30M)**

A-5 to C-6

Title: E. Accessories Models: CRMR27(-01)(-W)(-W01)(-8)(-12M), CRMF27(-01)(-W)(-W01), CRMR48(-01)(-W)(-W01)(-8)(-12)(-12M)(-18M), CRMF48(-01)(-W)(-W01), CRMR60(-W)(-8)(-12)(-12M)(-16)(-18M)(-24M), CRMF60(-W), CRMR72(-W)(-12)(-16)(-18)(-18M)(-24M)(-30M)												
Index No.	Description	Material or Model Number	Part Number	Required Number								
				A-5 to C-6								
1	4" Caster Kit (includes items 2 and 3)	<b>HS-5035 Undercounter</b>	4A5434A01	1								
	6" Caster Kit (includes items 2 and 3)	<b>HS-5036 Worktop Prep Table</b>	4A5435A01	1								
2	4" Non-Locking Caster	<b>Undercounter</b>	4A5427-01	2								
	6" Non-Locking Caster	<b>Worktop Prep Table</b>	4A5428-01	2								
3	4" Locking Caster	<b>Undercounter</b>	4A5427-02	2								
	6" Locking Caster	<b>Worktop Prep Table</b>	4A5428-02	2								
4	1/6 Size Pan, 4" Depth	<b>-8 Prep Table</b>	1000000344	8								
		<b>-12 and -12M Prep Table</b>		12								
		<b>-18 and -18M Prep Table</b>		18								
		<b>-24M Prep Table</b>		24								
		<b>-30M Prep Table</b>		30								
5	Cutting Board	<b>CRMR27-8</b>	3A4894-09	1								
		<b>CRMR27-12M</b>	3A4894-07	1								
		<b>CRMR48-8</b>	3A4894-10	1								
		<b>CRMR48-12</b>										
		<b>CRMR48-12M</b>	3A4894-08	1								
		<b>CRMR48-18M</b>										
		<b>CRMR60-8</b>	3A4894-13	1								
		<b>CRMR60-12</b>										
<b>CRMR60-16</b>												
	<b>CRMR60-12M</b>	3A4894-11	1									
	<b>CRMR60-18M</b>											
	<b>CRMR60-24M</b>											
	<b>CRMR72-12</b>	3A4894-14	1									
	<b>CRMR72-16</b>											
	<b>CRMR72-18</b>											
	<b>CRMR72-18M</b>	3A4894-12	1									
	<b>CRMR72-24M</b>											
	<b>CRMR72-30M</b>											