

PREPARE FOR YOUR HOLIDAY FEASTS

The 750-TH/III Cook & Hold oven utilizes Halo Heat® technology to gently and evenly cook your food and ensure the highest quality product. Consistent low temperature cooking activates the natural enzymes present in even the toughest cuts of meat and tenderizes as it cooks and holds. Whether you specialize in prime rib, corned beef sandwiches or barbecued ribs, Alto-Shaam's original Cook & Hold oven will provide you with highest quality product every time.



ALTO-SHAAM®

HALO HEAT® COOK & HOLD OVEN
Electric, low temperature, 100 lb. capacity - (10) full-size pans, simple controls with on/off power, stainless steel side racks, (3) stainless steel wire shelves, (1) exterior drip tray with removable pan, 3-1/2" casters; 2 rigid, 2 swivel with brakes, EcoSmart®, cULus, NSF, CE, IP X3, TUV NORD

Call for Pricing!

TriMark

Foodservice Equipment, Supplies and Design

MARLINN



AVENGER® ECONOMY ROLL-TOP CHAFERS

18-8 stainless, durable, easy to clean, patented contemporary styling, mirror finish

080043 Rectangular, 9 qt. 25" w x 17" l x 16" h

080044 Round, 6 qt., 18" x 18-1/2"



CASSETTE FEU®
PORTABLE BUTANE STOVES
#623051 12,000 Btu/hr
#623050 15,000 Btu/hr



BUTANE FUEL CANISTER
#623045 8 oz. can (12/cs)
Burns approximately 1 hr, 20 min.



CHAFING FUEL GELS
#622030 - 2 Hr Methanol, Blue Gel (72/cs)
#622032 - 2 Hr Ethanol, Pink Gel (72/cs)



POWER WICK CHAFING FUEL
#622047 - Up to 6 hours burn time per can, stem wick provides narrow width steady flame (24/cs)



GODDESS
18/10 stainless steel
#700015 Teaspoon (3dz/box)
#291038 Bouillon Spoon (2dz/box)
#292209 Dinner Fork (2dz/box)
#291623 Dinner Knife (1dz/box)



FREEDOM
Brandware® 18/0 stainless steel
#950026 Teaspoon (3dz/ box)
#950075 Bouillon Spoon (3dz/box)
#950326 Dinner Fork, 3 tine (3dz/box)
#950500 Dinner Knife, (1dz/box)



NEW RIM
18/10 stainless steel
#530000 Teaspoon (2dz/box)
#530005 Bouillon Spoon (1dz/box)
#530001 Oval Dessert Spoon (1dz/box)
#564114 Iced Tea Spoon (1 dz/box)
#530060 Dinner Fork (1 dz/box)
#530003 Euro Table Fork (1 dz/box)
#530040 Table Knife (1 dz/box)



MEDIUM WEIGHT CLASSIC RIM
Brandware® 18/8 stainless steel
#103520 Teaspoon (3dz/box)
#103521 Bouillon Spoon (3dz/box)
#103000 Dessert Spoon (3dz/box)
#103522 Dinner Fork (3 dz/box)
#103001 Euro Fork (3 dz/box)
#103523 Dinner Knife (1 dz/box)



BOSQUE COLLECTION
Ask your Sales Rep about the Bosque Collection from Homer Laughlin



BASICS COLLECTION™
Simple, back to basics styling in a beautiful bright white porcelain.

#345883 - 11-3/8" Plate, Coupe (1dz/box)
#345855 - 8" Plate, Coupe (3dz/box)
#345854 - 9" Plate (2 dz/box)
#345857 - 14" x 7-5/8" Racetrack Platter (1 dz/box)
#345856 - 12" x 6-5/8" Racetrack Platter (1 dz/box)
#345859 - 18 oz, 11" Entree/Pasta Bowl (1 dz/box)



SPYRO

Each piece is individually styled with a delicate swirling embossment that catches the light to create captivating optical effects.

- #346138 Plate, 11-3/4" dia., round (1 dz/box)
- #346139 Plate, 10" dia., round (2 dz/box)
- #346143 Plate, 6-1/2" dia., round (3 dz/box)
- #346142 Oval Platter, 13" dia. (1 dz/box)
- #346141 Oval Platter, 11" dia. (1 dz/box)
- #346140 Oval Platter, 8" dia. (2 dz/box)
- #346145 Metro Plate, 11" square (1 dz/box)
- #346144 Ultimate Bowl, 57 oz., 11-3/4" dia. (1/2 dz/box)
- #346147 Stacking Cup, 7-1/2 oz. (3 dz/box)
- #346146 Saucer, 6-1/2" dia. (3 dz/box)



ART DE CUISINE® MENU PROCELAIN

Contemporary and stylish range of white porcelain designed first and foremost with function in mind, making it suitable for all types of busy catering environments.

- #377011 Broad Rim Plate 12" (1/2 dz/box)
- #377001 Mid Rim Plate 10-5/8" (1/2 dz/box)
- #377002 Mid Rim Plate 9" (1/2 dz/box)
- #377003 Mid Rim Plate 8" (1/2 dz/box)
- #377004 Mid Rim Plate 6-3/4" (1/2 dz/box)
- #377010 Mid Rim Soup Bowl 10 oz, 9" (1/2 dz/box)
- #377006 Soup Cup 10 oz (1/2 dz/box)
- #377007 Flared Tea Cup 8 oz (1/2 dz/box)
- #377008 Broad Rim Tea Saucer 6-1/2" (1/2 dz/box)



LOUVRE SERVING COLLECTION

18/8 Stainless Steel

- #050154 Soup Ladle, 4 oz., 11-3/4"
- #050160 Serving Spoon, 10-1/2"
- #050157 Meat Fork, 10-1/2"
- #050155 Solid Serving Spoon, 9-1/2"
- #050170 Slotted Serving Spoon, 9-1/2"
- #050165 Sauce Ladle, 3/4 oz., 6"
- #050190 Pastry Server, 9-1/2"
- #050595 Long Handle Slotted Serving Spoon, 13-1/8"
- #050162 Long Handle Solid Spoon, 13-1/8" sold by each



- #151300
- BEEF BARON STEAK KNIFE**
- 5" Serrated S/S Blade, Round Tip,
- Black Polypropylene Handle (1 dz/box)



- #151006
- STEAK KNIFE**
- 5" S/S Blade, Pointed Tip,
- Jumbo Wood Handle (1 dz/box)



- #151007
- ULTIMATE STEAK KNIFE**
- 5" HD S/S Blade, Pointed Tip,
- S/S Frost Finish Handle (1 dz/box)



- #346326
- STOCKYARD FULL TANG**
- 10-1/2" long OA HC S/S Blade,
- Black Polypropylene Handle (1 dz/box)



- #151004
- STEAK KNIFE**
- 8-7/8" Long OA High Polished S/S/ Blade,
- Round Tip, Black Bakelite Handle (1 dz/box)



TABLE SKIRT

- #100 Shirred pleat, flame retardant, machine washable/dryable, 100% polyester, Wyndham, velcro clips included
- #638000 - 29" x 13", White
- #638015 - 29" x 17-1/2", Black
- #638010 - 29" x 17-1/2", White
- #638020 - 29" x 21-1/2", White



SKIRTING CLIPS

- #638070 - Snap Clip, 100 /bag
- #638071 - Velcro Clip, 100/bag



CONTOUR™ TABLE COVER

- Snug fit, reinforced rubber cup attached to leg, flame retardant, machine washable/dryable, polyester/spandex blend
- #638560 - 6' x 30", Black
- #638561 - 8' x 30", Black



ENDURANCE™ SERVINGWARE FROM AMERICAN METALCRAFT

These bowls and platters are manufactured from nearly indestructible melamine for long-lasting reliability in everyday performance. Dishwasher safe up to 200 degrees. Collection Not recommended for microwave use.



ENDURANCE™ CURVED PLATTERS
MFG# MEL43 Square Platter, 16" x 16"
MFG# MEL44 Triangle Platter, 17" (12/ea)

ENDURANCE™ FLAT PLATTERS
MFG# MEL2113 Rectangular, Platter,
21-1/2"L x 13"W, white (8/ea)



ENDURANCE™ FAUX SLATE
MFG# FSLT21 Platter, 21-1/2"L x 13"W
MFG# FSLT14 Square, 14-1/2"L
MFG# FSLT18 Platter, 18"L x 8-1/2"W
MFG# FSLT08 Platter, 14-3/4"L x 8-1/4"W

ENDURANCE™ SLANTED BOWLS
Dishwasher safe up to 200 degrees
MFG# MELSL52 5", 11 oz.
MFG# MELSL112 2", 112 oz.
MFG# MELSL82 8", 40 oz.



ENDURANCE™ RECTANGLE PLATTERS
#345477 - 14.25" x 7.5" (TriMark Marlinn
Stocked item)
MFG# MEL23 18" x 8.25"
MFG# MEL21 21" x 13"



ENDURANCE™ SQUARE PLATTERS
MFG# SQP10 12" x 1-3/8"
MFG# SQP16 16" x 2" (6/ea)

ENDURANCE™ SERVING BOWLS
MFG# MEL5 Round Bowl, 40 oz.
MFG# MEL9 Round Bowl, 270.51 oz.



BAMBOO DISPLAY RISER SET
MFG# RBRS3 Set of 3, round:
6"H, 9"H, 11"H



ENDURANCE™ SQUARE BOWLS
MFG# MELSQ73 7" x 7", 58 oz.
MFG# MLRP19 19-5/8"L x 8"W x 3"H
MFG# MLRP17 17-5/8"L x 11-7/8"W x 2-2/3"H
MFG# MLRP13 13-3/4"L x 9-7/8"W x 2-3/4"H
(12/ea)
MFG# MELSQ117 12" x 12", 228 oz.
MFG# MELSQ94 9-1/2"



IRONWORKS™ STAND
345476
2-tier stand holds ceramic, melamine,
glass and stainless steel trays or platters
along with rattan, wrought iron and
wire baskets.
19-5/8" w X 11-1/2" l X 18-3/8" h



DISPLAY RISERS
MFG# RSS3 Stainless Steel, Set of three,
6", 4", 8" (1/st)

MELAMINE BOWLS

Commercial dishwasher safe

#999326 - 8 oz., 6" dia., Diamond White (48/case)
 #999397 - 12 oz., 7-1/2" dia., Diamond Ivory (24/case)
 #999324 - Pasta/Soup, 13 oz., 9-1/4" dia.,
 Diamond White (24/case)

#999323 - Pasta, 16 oz., 11" dia., Diamond White (12/case)
 #999336 - Chili & Soup, 27.9 oz., 8-1/2" dia., Diamond Ivory
 (48/case)

#999324



#999336



#999397



CAL-MIL

IRON ICED JAR DISPLAY
 # 345609
 Includes (3) 4" glass jars
 Inner body holds ice to keep
 condiments and garnishes
 chilled
 13-1/4" w x 5" d x 7" h

LAS BRISAS™ BOWLS
 Melamine,
 Commercial dishwasher safe
 White
 #999487 - 6 oz., 7" dia. (12/case)
 #999489 - 12 oz., 9" dia. (12/case)



MENU & CARD HOLDERS

#285020 - S/S Loop Style, 1-5/8"
 #285039 - S/S Harp Style, 1-1/2"
 sold by each



HEAVY PLASTIC TABLE NUMBERS

4" square
 White w/black numbers

#285036 - 1- 50
 #285035 - 1-100



NUMBER STAND/CARD HOLDER #285040

Stainless steel with deluxe electro-
 polished finish
 2-5/8" base, 10" high
 sold by each



WOOD CARD HOLDERS

Features a narrow slit
 to securely hold cards
 1-1/8" square

#355070 - Olive Wood
 (lighter)
 #355071 - Walnut Wood
 (darker)
 sold by each



RESERVED SIGN #494005

White w/black letters
 Tent Style
 6" w X 2" h
 sold by each



TABLETOP CARD HOLDERS

Clear acrylic
 Extra stable with wide base

#285005 - 4-1/2" w x 6-1/2" h
 #285125 - 5" w x 7" h
 #285145 - 4" w x 6" h
 #285150 - 5-1/2" w x 8-1/2" h
 sold by each



TRIANGULAR DISPLAYETTE

Clear acrylic
 Extra stable wide base

#345899 - 4" w x 6" h
 sold by each



CAL-MIL

Libbey



VINA™
Tall, elegant & affordable

- #701902 - Tall Wine, 12 oz. (12/cs)
- #701910 - Tall Wine 16 oz. (12/cs)
- #345485 - Tall Wine 18-1/2 oz. (12/cs)
- #701909 - Diamond Tall Wine, 12-1/2 oz. (12/cs)

- #346107 - Wine w/Vino Deco, 16 oz (12/cs)
- #701908 - Flute, 8 oz (12/cs)
- #701911 - Martini, 8 oz (12/cs)
- #901916 - Martini, 10 oz (12/cs)



COLD BEVERAGE DISPENSER
#346075

BPA-free plastic container,
Round stainless steel base and lid,
Dishwasher safe, 3 gallon



Spring USA

BEVERAGE DISPENSERS

18/10 stainless steel top and
base with ice tube

- #345610 - 4 liter
- #345611 - 7 liter



ICE TUBE PITCHER
#340240

Ice tube allows liquids to chill
without diluting,
Great for juices
81.1 oz (2.4 liter)
Clear acrylic



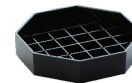
BEVERAGE DISPENSER
#088065



FDA approved polypropylene
Standard Tomlinson® faucets
Half-gallon graduations on side
of reservoir
3 gallon
Brown top and base

STAINLESS WINE CHILLER
#800025

Double-wall construction eliminates
condensation, fits 4" diameter
bottles, hand wash



4" DRIP TRAYS

- #563877 Octagon, Black
- #564005 Square, Black

CAL-MIL

CAMWEAR® PITCHERS

Made of virtually unbreakable polycarbonate
Exclusive ice-control contoured lip and pour spout reduce spills
Slotte base allows for complete and sanitary drying
Dishwasher safe
Clear

CAMBRO

- #340193 - 32 oz, ribbed w/broad base
- #340210 - 48 oz, ribbed w/broad base
- #340230 - 60 oz, ribbed
- #340167 - 64 oz, ribbed and tapered
- #340225 - 64 oz, covered w/3 position lid



340193



340230



340210



340167



340225



Libbey

EMBASSY® STEMWARE
Safedge® Rim and foot guarantee

- | | |
|--|--|
| #700950 - 7 oz., Rocks Glass Footed (2dz/cs) | #701055- 6 oz., Champagne Flute (1dz/cs) |
| #700890 - 10-1/2 oz., Goblets 5-1/4"h (2dz/cs) | #564033 - 3 oz., Mini Martini Glass (1dz/cs) |
| #700960 - 10-1/2 oz., Goblets 5-3/4"h (2dz/cs) | #700976 - 9-1/4 oz., Martini Glass (1dz/cs) |
| #700885 - 11-1/2 oz., Goblets 6-1/8"h (2dz/cs) | #700970 - 8-1/2 oz., Wine, round bowl (2/dz) |
| #700955 - 10-1/2 oz., Goblet High Heat Tempered, 5-1/4"h (2 dz/cs) | #700975 - 8-1/2 oz., Wine, pear shape (2/dz) |

CLARISSE™
Outstanding durability, great value, high style barware, rim-tempered

- MFG# 77787 7 oz., Old Fashioned / Rocks Glass (3/z)
 MFG# 77788R 8 oz., Rocks Glass (3/dz)
 MFG# 77789 9 oz., Hi Ball/Beverage Glass (3/dz)
 MFG# 77770 10 oz., Rocks Glass (3/dz)
 MFG# 90252 10 oz., Rocks Glass, Stackable (2/dz)
 MFG# 90253 12 oz., Dbl Old Fashion, Stackable (2/dz)
 # 345112 - 12 oz., Beverage Glass (3/dz)
 MFG# 77794 14 oz., Tumbler Glass (3/dz)
 # 346085 - 14 oz, Beverage, Stackable (2/dz)
 MFG# 90255 16 oz., Ice Tea Cooler Glass (2/dz)
 # 345111 77796 16 oz., Ice Tea Glass (3/dz)
 MFG# 90263 20 oz., Cooler (2/dz)
 MFG# 77780 20 oz., Ice Tea Cooler Glass (2/dz)



DISCO COLLECTION

- #345813 - Old Fashion, 8-1/2 oz. (2dz/cs)
 #345814 - Double Old Fashion, 11 oz. (2dz/cs)
 MFG# H054540 Soho Collins, 11-1/2 oz. (2/dz)

ONEIDA®
TRIPLE QUALITY SINCE 1888



- SAF-T-ICE® TOTE**
 #249010 - 6 gallon
 #249009 - 5 gallon



SAF-T-SCOOP® & GUARDIAN SYSTEM™

- Includes:
 1 Saf-T-Scoop®,
 1 Guardian™ holder with removable drainage cap,
 1 mounting bracket, 2 wire hanging brackets, 2 suction cups



- #480065 - Guardian System 6 to 10 oz
 #480066 - Guardian System 64 to 86 oz

POURMASTER® COMPLETE

- #027040 Quart Complete
 #027080 Replacement Cap, White

Includes container, easy grip neck & color coded cap with snap tight spout, Polyethylene construction, Cap and Spout Colors: Red, Yellow, Green Orange, Brown and White.



SPARTA® SPECTRUM® CUTTING BOARDS

High density polyethylene NSF
MFG# 1088600 18" x 24" x 1/2", Set of 6
colors, includes cross contamination chart

#354050



CARLISLE

TWO-WAY EGG SLICER

#225310

Cast aluminum, epoxy coated
base with s/s cutting wires.
Cuts round or oval shapes.



MATFER
BOURGEAT
A passion for taste

SERVICE CART

#070320

Polypropylene shelves, lightly tex-
tured, stain resistant surface
Marine rails keep contents in place
Aluminium uprights to ensure
sturdiness

Four 4" swivel, powder coated steel
casters

300 lb. load capacity

32-7/8"l x 16-1/4"d x 38"h



CAMBRO

EASY WEDGER™ & EASY APPLE CORER

#704013

Wedges many fruits and
vegetables, 8 section,
stay-sharp stainless steel
blades, stainless steel,
NSF



NEMCO

EASY ONION SLICER II™

#704025

Sturdy aluminum construction,
Two tiers of scalloped pre-
tensioned blades for consistent
slice thickness
Compact, portable, and simple
to use



NEMCO



John
BOOS
Since 1887

PROFESSIONAL CUTTING BOARDS

Hard Rock maple with Boos Block
Cream Finish with Beeswax, edge
grain, reversible

#155060 - 18" x 24" x 1-1/2"

SAF-T-KNIFE™ STATION

#150009

15" x 15" x 4-1/4"

san jamar™
smart. safe. sanitary.



BUSSING AND TRANSPORT CART

#070325

Black durable plastic construction, NSF
19-3/4"w x 36-1/2"l x 38"h



CARLISLE

DEXTER
THE EDGE SINCE 1919

CHEF'S KNIFE

#140110 - 10", S/S Blade,
Sofgrip White Handle



PARING KNIFE

#140010 - 3-1/4", S/S Blade,
Sani-Safe



SLICER

#140225 - 9" Scalloped Offset,
Sani-Safe



SPREADER

#129175 - 3-1/2" Blade



TURNER

#129090 - 6" x 3" Hamburger
Turner



PIE KNIFE

#129128 - 4-1/2" x 2-1/4"





GUEST CHECK PRESENTER
 #280786
 Foil stamped in gold - Thank You
 Padded cover with two inside pockets
 and credit card holder
 Stitching around the edges
 5" w x 9" l



DELUXE SEWN MENU COVERS
 8-1/2" x 11"
 double, 4 view
 turned in edge
 reinforced binding w/matching thread
 double stitched
 metal decorative corners

PLASTIC BOOSTER SEATS

#005170 - Dark Brown - Reversible/Dual Height
 #005175 - Black, single height
 #005177 - Dark Brown, single height



GRIP TITE™ TRAYS

#673015 - 14" Round, Black
 #673024 - 16" Round, Tan
 #673022 - 16" Round, Black
 #673023 - 27" Oval, Black



COMPACT DIGITAL PORTION CONTROL SCALE

465310
 2 lb. x 0.1 oz
 Large 0.5" LCD read out
 Operates on 120V adaptor (included) or 9 volt battery
 5-7/8" x 6-5/8" x 1-1/2" OA,
 5-7/8" x 4-3/4" removable platform



DIGITAL PORTION CONTROL SCALE

#465163
 10 lb x 1/8 oz (1/4 oz over 2 lbs) / 10 lb x 0.1 oz
 (0.2 oz over 2 lbs) / 5 kg x 5 g capacity.
 8" x 5" stainless steel platform.
 0.5" LCD readout.
 Tare and hold features.
 Auto off and disable auto off features.
 Low battery and overload indicators.
 Operates on AC adaptor (included) or
 rechargeable battery (included).
 NSF listed.



EXOGLASS® BOUILLON STRAINER
 #624115
 8" dia., one-piece composite material body &
 ergonomic handle with pan hooks, wire
 reinforcement, heat resistant up to 430°F,
 stainless steel mesh, dishwasher safe

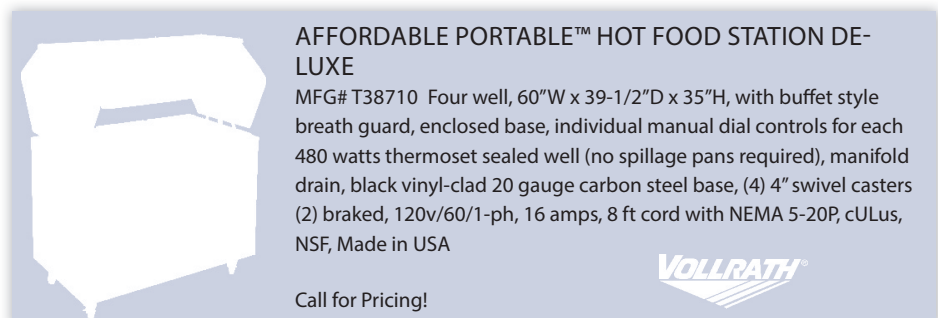


RAPI-KOOL® PLUS COLD PADDLES
 #417103 - 64 oz
 #417014 - 128 oz
 Helps to rapidly chill food through the
 temperature danger zone (135°F (57°C) to
 70°F (21°C) in 2 hours, then to 41°F (5°C)
 within 4 hours.



CAMCARRIERS® PAN CARRIER

#088130
 Easy to transport
 Durable hinges and latches
 Great temperature retention
 Front-loading food carrier
 Great storage space



**AFFORDABLE PORTABLE™ HOT FOOD STATION DE-
 LUXE**
 MFG# T38710 Four well, 60"W x 39-1/2"D x 35"H, with buffet style
 breath guard, enclosed base, individual manual dial controls for each
 480 watts thermoset sealed well (no spillage pans required), manifold
 drain, black vinyl-clad 20 gauge carbon steel base, (4) 4" swivel casters
 (2) braked, 120v/60/1-ph, 16 amps, 8 ft cord with NEMA 5-20P, cULus,
 NSF, Made in USA

Call for Pricing!



MARLINN



CRES COR.

INSULATED HOT HOLDING CABINET WITH HUMIDITY #347897 Right Hinged, 25-3/4" w x 33-1/2" d x 69-3/4" h

Fully insulated holding cabinet keeps prepared foods at serving temperatures, Powerful, yet efficient, 2000W heating system maintains the right combination of heat and humidity to properly hold products, Humidity system allows you to regulate humidity levels by controlling air temperatures to 200°F, Lowering air temperatures allows for humidity up to 95%, Integral drip trough on front keeps traffic area dry, safer, Internal frame in body maintains structural rigidity, Body constructed of non-corrosive, Hi-Tensile aluminum for strength and ease of mobility

ULTIMATE RESTAURANT RANGES
#610534 243,000 BTU
Gas, 36", (6) non-clog burners, standard grates, standing pilot, Standard oven with battery spark ignition, includes (1) rack, 22-1/2" flue riser with shelf, stainless steel front, sides, shelf & 6" adjustable legs, CSA, NSF Call for Pricing!



SOUTHBEND

NON-INSULATED HOLDING & TRANSPORT CABINET #745044 - Holds (18) 18"x 26" Pans or (36) 12" x 20" Pans, 2000W, 25-1/4" w x 30-3/4" d x 71" h

Heavy duty 20 gauge polished stainless steel cabinet, Full size glass door with field reversible heavy duty hinges, door latch mechanism, and gaskets, Fixed interior pan supports are designed to accommodate pan covers for transporting, and are removable for easy cleaning, Top mounted, recessed control panel, Power "on" and heater "on" indicator lights, dial thermostat adjustable from ambient to 190°F and temperature read-out dial, Fan and air tunnel provide even heat distribution. Two 1000 watt metal sheathed heating elements, 5" casters, Lifetime warranty on the heating elements, 120V, cULus, UL Classified, ENERGY STAR

VULCAN



MOVEABLE GAS CONNECTORS WITH RESTRAINING DEVICE

- Flexible, corrugated, stainless steel hose covered with a thick antimicrobial PVC coating and fitted with a Snapfast® One-Handed quick disconnect coupling
- Resistant to heat, cleaning solutions and chemicals
- Fusible link in coupling melts and automatically shuts off gas supply in case of fire
- Includes coiled restraining device with installation mounting hardware.
- CSA, NSF

000027 36" x 3/4" dia
000019 48" x 3/4" dia
000043 48" x 1" dia



DORMONT SAFETY-SET

MFG# PS Equipment placement system for all caster-mounted equipment, allows percise, consistent equipment placement under the fire supression and ventilation systems, satisfies NFPA codes 17A (5.6.4) and 96 (12.1.2.3), Includes two (2) units and both adhesive foam tape and hardware pack as optional installation methods

Dormont



EASY INSTALL PRE-RINSE UNIT

- 6" wall bracket
- 18" riser
- B-0044-H flexible stainless steel hose
- B-0107 spray valve
- 8" center deck or wall mounted faucet with "pop & lock" riser installation
- Spring action gooseneck
- EPAct 2005 Compliant
- 1/2" NPSM male inlets

- # 192095 Wall Mount
- # 192090 Deck Mount

PRE-RINSE PARTS & ACCESSORIES

- #192196 Add-on Faucet for Pre-Rinse Units, 12" nozzle, Includes 3" Nipple
- #192040 Spray Valve Assembly with Hold Down Ring and Rubber Bumper
- #192080 Repair Kit for B-0107 Spray Valve
- #192151 Twist Waste Valve, 3 1/2" Sink Opening, 2" Drain Outlet (Replaces B-3913, B-3917)
- #192110 Stainless Steel Flex Hose, 44" flexible w/Inner Rubber Tubing



COMMERCIAL FOOD PROCESSORS

- 850 servings in 3 hours or less
- 3 qt bowl and stainless steel "S" blade included
- Vegetable preparation attachment with external ejection
- 2 discs included: 2mm 5/64" grating disc (27577) & and 4mm 5/32" slicing disc (27566)
- 3 year motor warranty, 1 year parts and labor warranty 120V

- #198000 Food Processor w/3 qt Clear Bowl
- #198006 Food Processor w/3 qt Stainless Steel Bowl
- #198008 Food Processor w/3 qt Clear Bowl and Dice Kit
- #198002 Cutter Bowl Only, 3 qt, Clear
- #198003 Replacement S-Blade
- Sold by each.



- HEAT LAMP
- #197126
- Adjustable height, Sturdy stainless steel and aluminum construction, Durable, scratch-resistant finish is easy to clean, 2 clear 250 watt infrared bulbs, 6-foot cord, 14" w x 19-1/2" d x 24" h, 1 year parts and labor warranty, 120V
- Sold by each.
- (base tray and pan shown not included.)



- COMMERCIAL TOASTER
- #646101
- Heavy duty
- 300 slices per hour,
- Four 1-1/8" regular slots

- COMBINATION TOASTER
- #646102
- Heavy duty
- 380 slices per hour,
- Two regular slots, two extra wide bagel slots
- 120v



- SPICE GRINDER
- #345436
- Finely grinds cinnamon sticks, nutmeg, peppercorns and much more in seconds



MARLINN



CATERING TRAYS & LIDS
Black PET Catering Trays and Clear Lids

- #179043 - 16", 6 Compartment Tray, case pk = 36
- #179039 - 12" Flat Tray, case pk = 36
- #179101 - 12" Low Dome Lid, case pk = 36 (fits tray #179039)
- #179111 - 16" Low Dome Lid, case pk = 36 (fits tray #179043)



Black Square Catering Trays and Crystal Clear "Ribless" Lids

- #179170 - 12" Square Tray, case pk = 25
- #179174 - 14.1" Square Tray, case pk = 25
- #179176 - 16" Square Tray, case pk = 25
- #179171 - 12" Square Dome Lid, case pk = 25 (fits tray #179170)
- #179111 - 14.1" Square Dome Lid, case pk = 25 (fits tray #179174)
- #179177 - 16" Square Dome Lid, case pk = 25 (fits tray #179176)



Compartment Party Tray/Dome Lid Combo

6 Compartment Black Tray with Clear Dome Lid - 12"

#179189 - case pk = 12



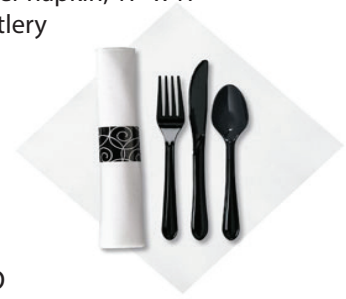
NEW YEAR PARTY KITS



#461348
Super Deluxe Assortment for 100

CATERWRAP® PRE-ROLLED NAPKIN & CUTLERY
White Linen-Like dinner napkin, 17" x 17"
Black heavyweight cutlery

#357505
case pack = 100



LINEN-LIKE® FOLDED TABLECOVERS

- #760012 - 82" X 82", Silver Prestige
- #760014 - 50" x 108", Silver Prestige
- #760015 - 50" x 108", White case pack = 24



DECORATOR BEVERAGE NAPKINS

- 9-1/2" X 9-1/2", 2 ply, case pk = 4/250
- #505055 - Red
- #511016 - White
- #505160 - Hunter Green

DINNER NAPKINS, 15" x 17", case pk = 4/250

- #520022 - Black
- #520160 - Hunter Green



TABLECOVER

#758105 - 54" X 108", Rectangular, White, case pk = 24

BANQUET ROLLS - 40" X 150"

- #757797 - Royal Blue, case pk = 4
- #757731 - Red, case pk = 4



#461341
Chicago Assortment for 50